

COEGA SPECIAL ECONOMIC ZONE

Water for Industrial Development

06 October 2017



• right PLACE • right TIME • right CHOICE

B-BBEE LEVEL 3 CONTRIBUTOR ISO 9001 14001
15489 20001 27001 31000 OHSAS 18001

- 1 The Coega SEZ Overview
- 2 The Package of Plans Approach
- 3 Water Demand Planning
- 4 Conclusion



• right **PLACE** • right **TIME** • right **CHOICE**

B-BBEE LEVEL 3 CONTRIBUTOR ISO 9001 14001
15489 20001 27001 31000 OHSAS 18001

Coega Overview: Ownership & Control



Government of
THE REPUBLIC OF SOUTH AFRICA



President
Mr Jacob Zuma



Premier of Eastern Cape
Mr Phumulo Masualle



Minister
Dr Rob Davies



Province of the
EASTERN CAPE
REPUBLIC OF SOUTH AFRICA



the dti

Department:
Trade and Industry
REPUBLIC OF SOUTH AFRICA



Executive Mayor
Mr Athol Trollip



MEC of DEDEAT
Mr Sakhumzi Somyo



Province of the
EASTERN CAPE
REPUBLIC OF SOUTH AFRICA



nelson mandela bay



• right PLACE • right TIME • right CHOICE

B-BBEE LEVEL 3 CONTRIBUTOR ISO 9001 14001
15489 20001 27001 31000 OHSAS 18001

Coega Overview: current status

43 Operational investors
IDZ & NMBLP

17 International companies
26 Home-grown companies

R6.682 bn private sector investment

R2.646 bn top-structures for investors

16 686 Jobs have been created in the SEZ

7 575 Operational jobs
9 107 Construction jobs

Over **85 886** people trained since inception

4 x Customs Controlled Areas (CCA) to reduce costs for exporters (Zone 1 & 2)



Current Investors

 FAW 	 BOSUN Export de Base 	 DIGITAL LOGISTICS 	 DC Dynamic Commodities 	 PE COLD STORAGE (PTY) LTD 	 AGNI STEELS SA PROPRIETARY LIMITED 
 Logistics 	 GM 	 COEGA DAIRY 	 Lifting Global Trade. APM TERMINALS 	 WNS Expanding Your Enterprise 	 EDISA PEAKING POWER 
 Discovery 	 famous brands LIMITED 	 faurecia 	 REHAU Unlimited Polymer Solutions 	 electrowinds POWERED BY NATURE 	 ID LOGISTICS 
 ANTOLIN 	 BENTELER Automotive 	 HELLA 	 DCD WIND TOWERS 	 DSV Global Transport and Logistics 	 AIR PRODUCTS 
 yector logisticsolutions 	 AFROX A Member of The Linde Group 	 Cerebos 	 INERGY AUTOMOTIVE SYSTEMS 	 Tomato Paste Factory 	 QPlus Automotive 
 ntip NATIONAL TRAINING INITIATIVE PROGRAMME 	 Super Syrupa 	 CFR ZAG PAK SHIPPING YOUR WORLD SHIPPING YOUR WORLD 	 uddi Udding Developmental Initiatives Nelson Mandela Bay 	 itpsa Industrial Técnica Piscuara, S.A. 	 Lension 
 Ulrica & Associates 	 MICS Water Harvest Outreach Services 	 SEA SAFETY TRAINING GROUP 	 SBFS SMALL BUSINESS FINANCE & SUPPORT Financing Sustainable Small Business 	 Redisa 	 Speculative Warehouse Investor being pursued 

◦ Other

* Projects Being Implemented

Coega Overview: Internal Capacity to Deliver

Vision 2030 (infrastructure award)	2017
Top Performing Public Service	2016
Job Creation	2016
2030 Vision	2016
Legends of Empowerment & Transformation	2016
Top Empowered: Public Service	2015
Top company in Infrastructure Development	2014
Top Performing Public Service	2014
Top Employer in SA: Public Sector	2014-16
Best Provider of Services to Exporters	2014
Most Empowered Enterprise	2014
Best company with most jobs created	2014
Top Green Organisation	2014

top[®]
EMPLOYERS
INSTITUTE

NATIONAL BUSINESS AWARDS
WINNER **2016**
TOP PERFORMING PUBLIC SERVICE AWARD

Exporters Club
OF SOUTH AFRICA

12th Annual
NATIONAL BUSINESS AWARDS

14th ANNUAL
OLIVER EMPOWERMENT AWARDS
2015
INSPIRING & RECOGNISING LEADERS IN TRANSFORMATION

3rd ANNUAL
— SA PREMIER —
BUSINESS AWARDS
2014/15

Coega Highlights

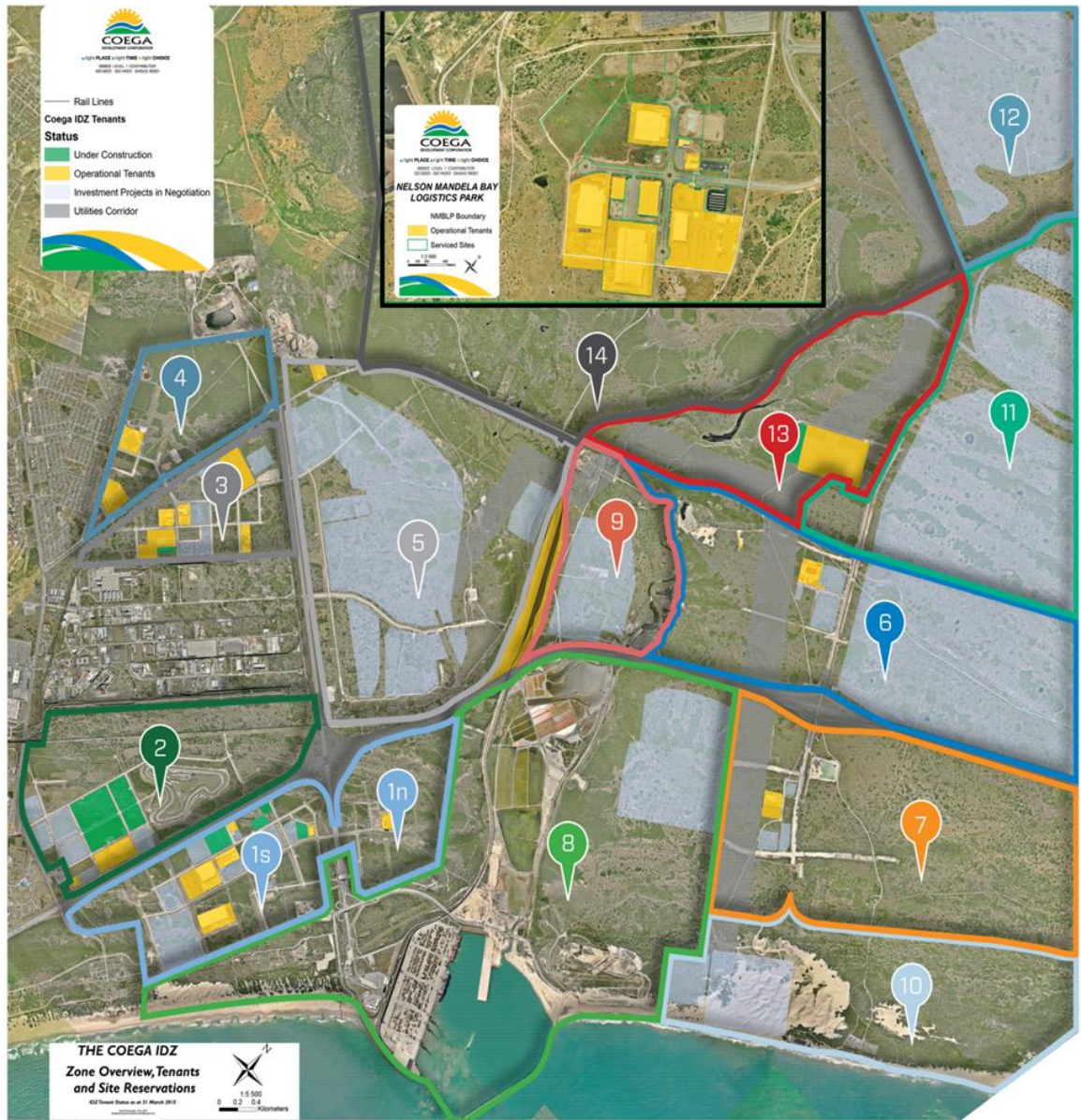


“In the last 5 years, the CDC has signed new investment deals with 61 private sector investors, with a combined investment value of R35.8 billion, making Coega IDZ the No 1 IDZ in Africa” - Dr Ayanda Vilakazi, Coega’s Head of Marketing

Coega Wins Top Performance Award. (left to right) Coega CEO - Pepi Silinga; MEC for EC Economic Development - Sakhumzi Somyo, Environmental Affairs & Tourism; Premier of the Eastern Cape - Phumulo Masualle ; and Vice President of the People’s Republic of China - Dr LI Yuanchao.

***“I’ve been to many developing countries and industrial development zones, the Coega IDZ is by far the best of them all”
- Dr LI Yuanchao, Vice President of the People’s Republic of China.***

SEZ Zones per Priority Investment Sector



- ZONE 1N**
Commercial Cluster – Coega Business Centre
- ZONE 1S**
Logistics Cluster – Digistics, Famous Brands, APM Terminals, PE Cold Storage, General Motors South Africa, Vector Logistics
- ZONE 2**
Automotive Cluster – FAW, UTI
- ZONE 3**
General Industries Cluster – Afrox, Powerway, Air Products, Dynamic Commodities, Coega Dairy, Coega Cheese, DCD Wind Tower
- ZONE 4**
Training & Academic Cluster – Human Capital Solutions, BPO Park: Discovery
- ZONE 5**
Metallurgical Cluster – Bosun Brick
- ZONE 6**
Ferrous Metals Cluster – Agni Steels SA, Electrawinds
- ZONE 7**
Chemicals Cluster – Cerebos
- ZONE 8**
Port Area
- ZONE 9**
Materials Handling Cluster
- ZONE 10**
Mariculture & Aquaculture Cluster
- ZONE 11**
Petrochemical Cluster
- ZONE 12**
Advanced Manufacturing Cluster
- ZONE 13**
Energy Cluster – Dedisa
- ZONE 14**
Advanced Manufacturing; Aeronautical & Aerospace Cluster
- NMBLP**
Nelson Mandela Bay Logistics Park – MSC, Grupo Antolin, Benteler, Inergy, Rehau, Faurecia, Hella

Project implemented- Dedisa Peaking Power Plant

- **Project Name: Dedisa Peaking Power Plant**
- **Investment Value: R3.5 billion**
- **Project Type: Energy**
- **Origin: France**
- **Jobs: 30 Operational; 1490 Construction**
- **Start of Operations: 2015**



DEDISA PEAKING POWER
RELIABLE ELECTRICITY TO SOUTH AFRICA

Operated By: **ENGIE**



Project implemented- Vector Logistics

- **Project Name: Vector Logistics**
- **Investment Value: R170 million**
- **Project Type: Logistics**
- **Origin: South Africa**
- **Jobs: 16 Operational; 150 Construction**
- **Start of Operations: Q3 2015**



Project implemented- ID Logistics

- **Project Name: ID Logistics**
- **Investment Value: R30 million**
- **Project Type: Logistics**
- **Origin: South Africa**
- **Jobs: 30 Operational; 150 Construction**
- **Start of Operations: Q2 2015**



Project implemented- Coega Cheese Expansion



- **Project Name: Coega Cheese**
- **Investment Value: R70 million**
- **Project Type: Agro processing**
- **Origin: South Africa**
- **Jobs: 30 Operational; 150 Construction**
- **Start of Operations: Q4 2015**

- **Project Name: ID Logistics**
- **Investment Value: R30 million**
- **Project Type: Logistics**
- **Origin: South Africa**
- **Jobs: 30 Operational; 150 Construction**
- **Start of Operations: Q2 2015**

Project implemented- Coega Dairy

- **Project Name: Coega Dairy**
- **Investment Value: R50 million**
- **Project Type: Agro processing**
- **Origin: South Africa**
- **Jobs: 54 Operational; 150 Construction**
- **Start of Operations: Q4 2015**



Projects implemented: Discovery Phase 2 & WNS

Discovery Phase 2 - R10 million



- **Jobs: 300 Operational**
- **Start of operations: Q4 2015**

WNS R33 million



- **Jobs: 950 Operational**
- **Start of operations: Q4 2015**

Project implemented- REHAU Phase 2

- **Project Name: Rehau**
- **Investment Value: R15 million**
- **Project Type: Automotive**
- **Origin: Germany**
- **Jobs: 45 Operational: 150 Construction**
- **Start of Operations: Q4 2015**



- About BAIC International
 - SOE with global footprint
 - 20 countries
 - 207 on the Global Fortune 500
 - Top 4 largest Chinese Automaker
 - 2nd in Heavy Commercial Vehicles
 - 4th in Passenger & Light Commercial Vehicles
 - Annual production of 2.5 million vehicles (3.6 times as SA)
 - Targeting 5 million units by 2020
(> UK + Italy + Turkey + Africa)
 - 2015 Revenue approx. Half a Trillion Rand



BAIC Project Specifics

- Phased approach in NMB:
 - Initial Phase: **30,000** units
 - Full capacity: **100,000** units (over 5 years)
 - **Expected 800 - 1,500** operational jobs
 - **10,500** indirect jobs at entry
 - New supplier base to be developed
 - **4,000** direct jobs at peak
 - **50%** Exports
 - **\$770** million investment (Exch. 04/05/2016)
 - Breaking ground: **30 November 2016**
 - Start of Production: **Mid 2018**
- 

BAIC's Artistic Impression



What Sets Coega Apart

- Only Metro in SA served by two ports :
[93% of EC container handling capacity]
- 2.6 million TEU capacity
- Served by major shipping lines & car carriers
[90% of EC capacity]
- CCA: 70% saving on surety bond
- CDC institutional capacity:
 - Labour & SHEQ Services
 - Project development
 - Regulatory approval
- Services
 - Roads, Electricity, Waste, Waste Water
 - Water



The Package of Plans Approach



• right **PLACE** • right **TIME** • right **CHOICE**

B-BBEE LEVEL 3 CONTRIBUTOR
ISO 9001 14001 20001 27001 31000 OHSAS18001

PACKAGE OF PLANS APPROACH

CDC PACKAGE OF PLANS



MACRO

IDP / SDF

DEVELOPMENT FRAMEWORK PLAN

STATUTORY ZONING

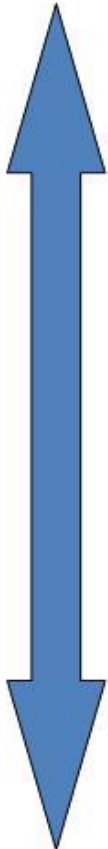
MASTER PLANS FOR CDA & OTHER

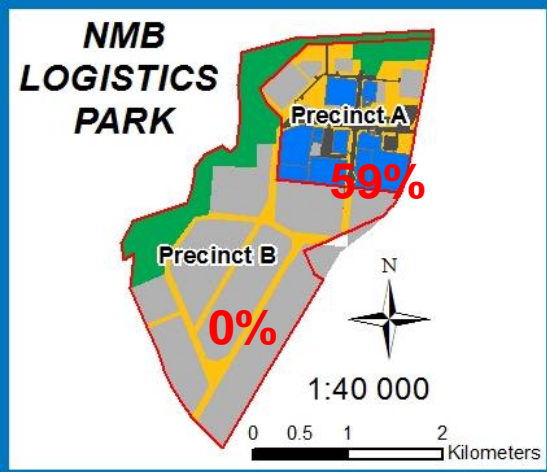
LAYOUT PLANS

SITE DEVELOPMENT PLANS

BUILDING PLANS

MICRO





**RED = OPERATIONAL
% OF LETTABLE**

COEGA IDZ LETTABLE AREA OVERVIEW

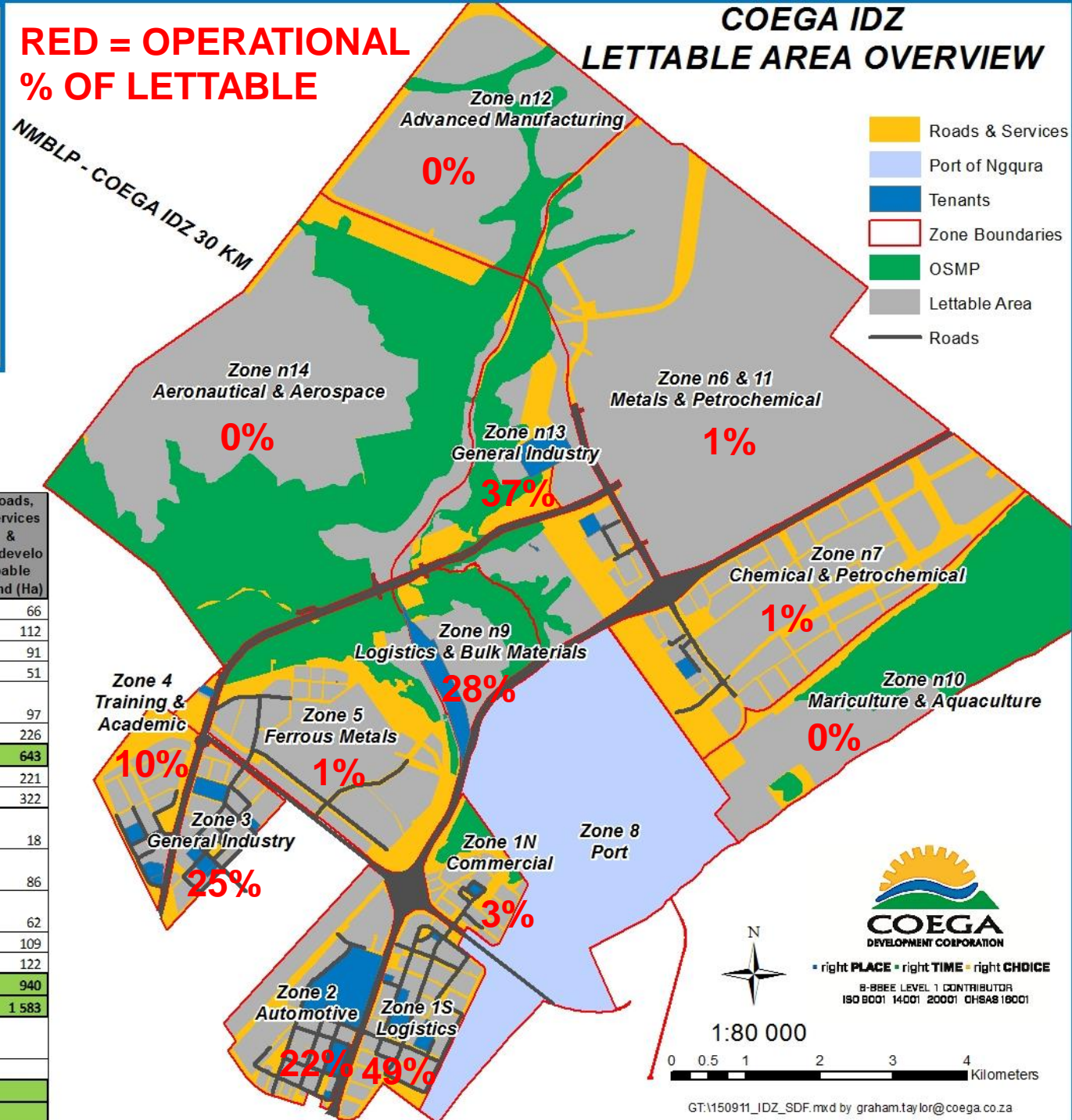


TABLE 1

ZONE	MAIN SECTOR	Gross Area (Ha)	Lettable Area (Ha)	OSMP Areas (Ha)	Roads, Services & Undevelopable Land (Ha)
1N	Commercial	166	66	34	66
1S	Logistics	298	187	-	112
2	Automotive Cluster	394	303	-	91
3	General Industries Cluster	181	130	-	51
4	Training / Academic Cluster	199	102	-	97
5	Metallurgical Cluster	810	421	163	226
TOTAL CDA		2 048	1 208	196	643
n6&11	Metals & Petrochemical	2 313	1 988	104	221
7	Chemical Cluster	950	628	-	322
9	Materials Handling Cluster	278	151	109	18
10	Mariculture & Aquaculture Cluster	897	247	564	86
12	Advanced Manufacturing Cluster	838	641	135	62
13	Energy Cluster	409	125	175	109
14	Aeronautical & Aerospace	2 264	1 040	1 101	122
TOTAL COEGA EAST		7 948	4 820	2 188	940
TOTAL IDZ		9 996	6 028	2 384	1 583
A	Automotive Logistics Supplier Park	57	44		
B	Logistics Supplier Park	126	75		
TOTAL NMBLP		183	119		
TOTAL IDZ & NMBLP		10 179			

Water Demand Planning



▪ right **PLACE** ▪ right **TIME** ▪ right **CHOICE**

B-BBEE LEVEL 3 CONTRIBUTOR
ISO 9001 14001 20001 27001 31000 OHSAS18001



Water Demand Planning

Spatial Planning to support water demand for long term growth and short term demand



• right **PLACE** • right **TIME** • right **CHOICE**

B-BBEE LEVEL 3 CONTRIBUTOR
ISO 9001 14001 20001 27001 31000 OHSAS18001



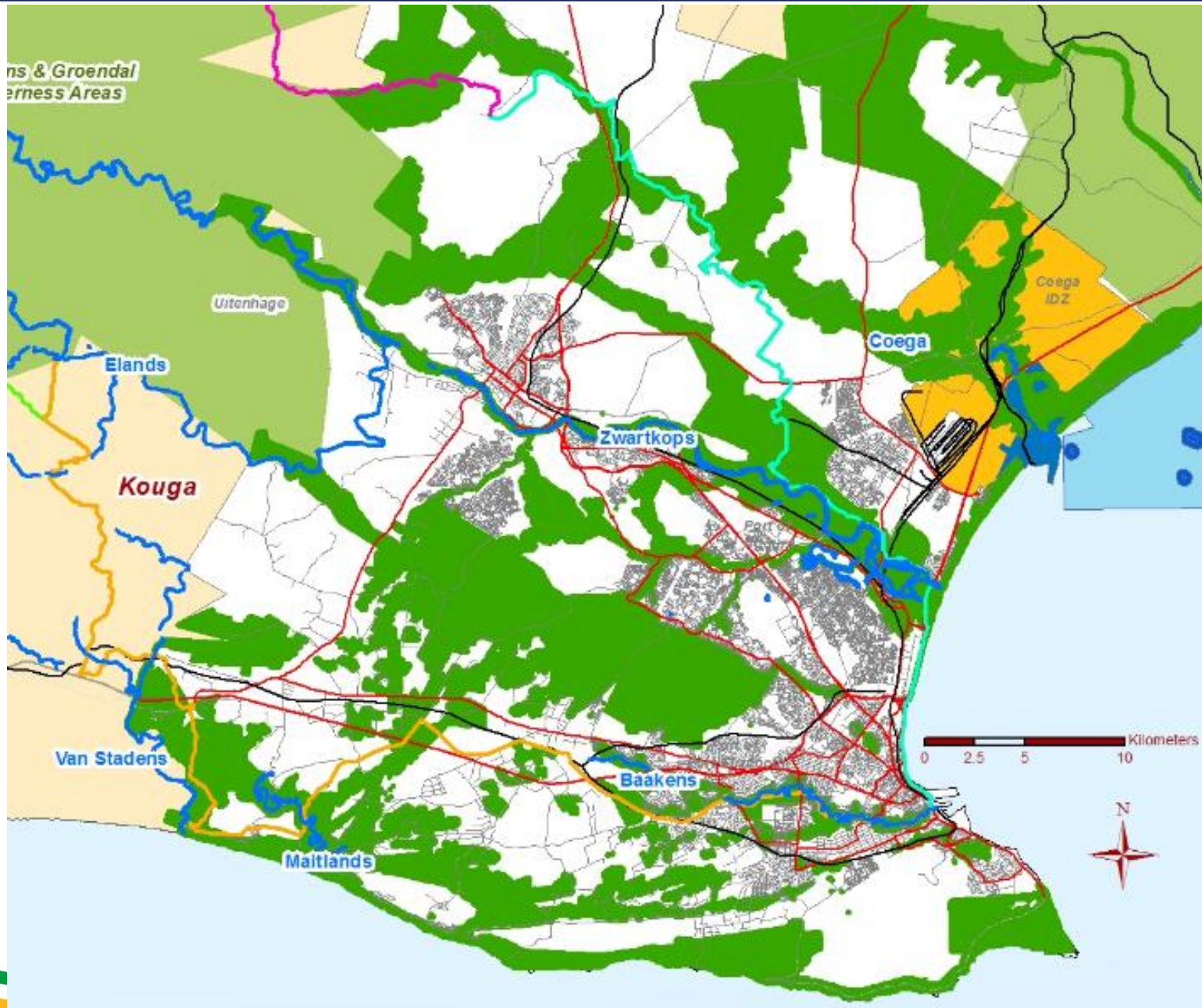
NELSON MANDELA BAY – EARLY IMAGES



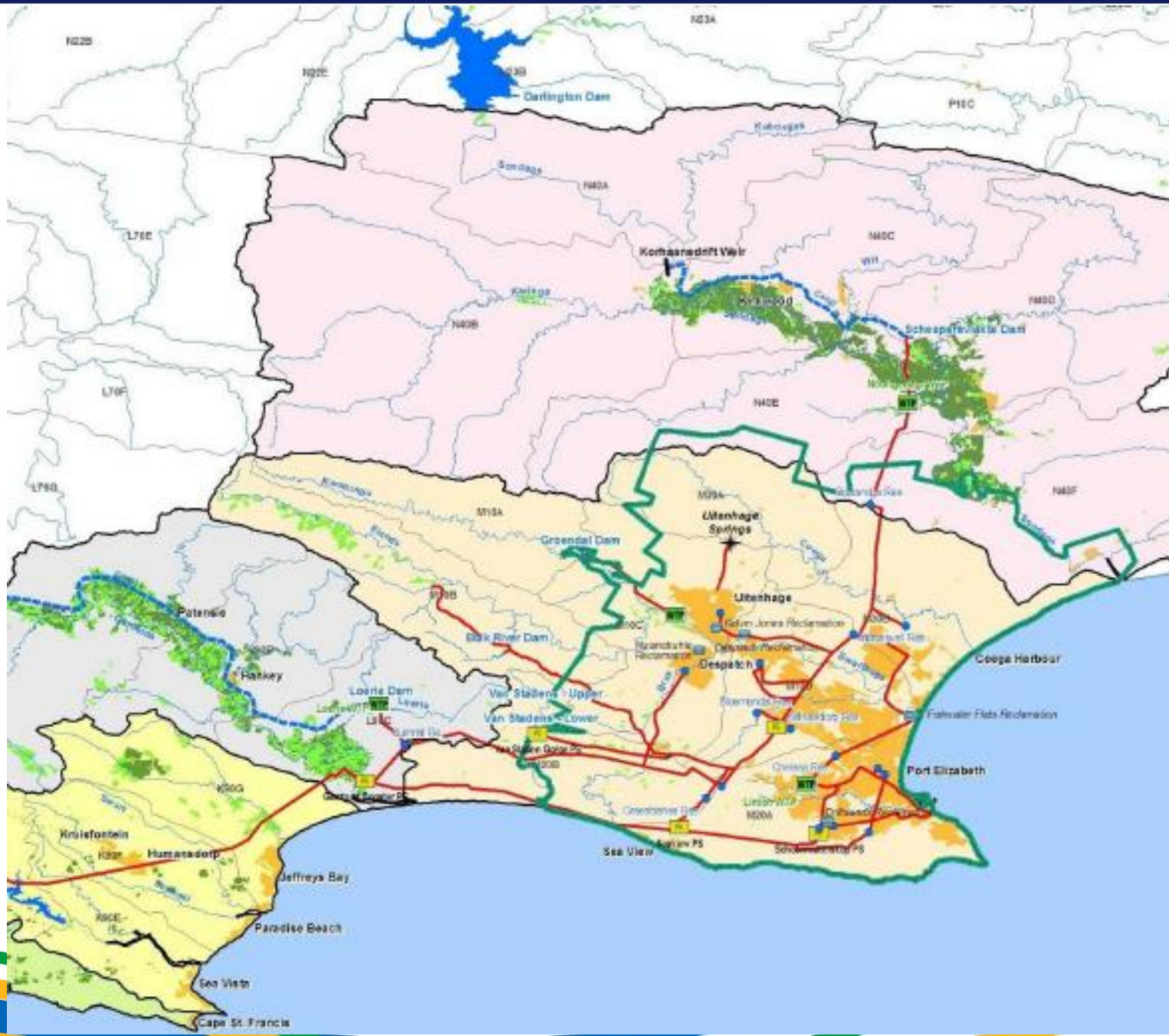
NELSON MANDELA BAY – EARLY IMAGES



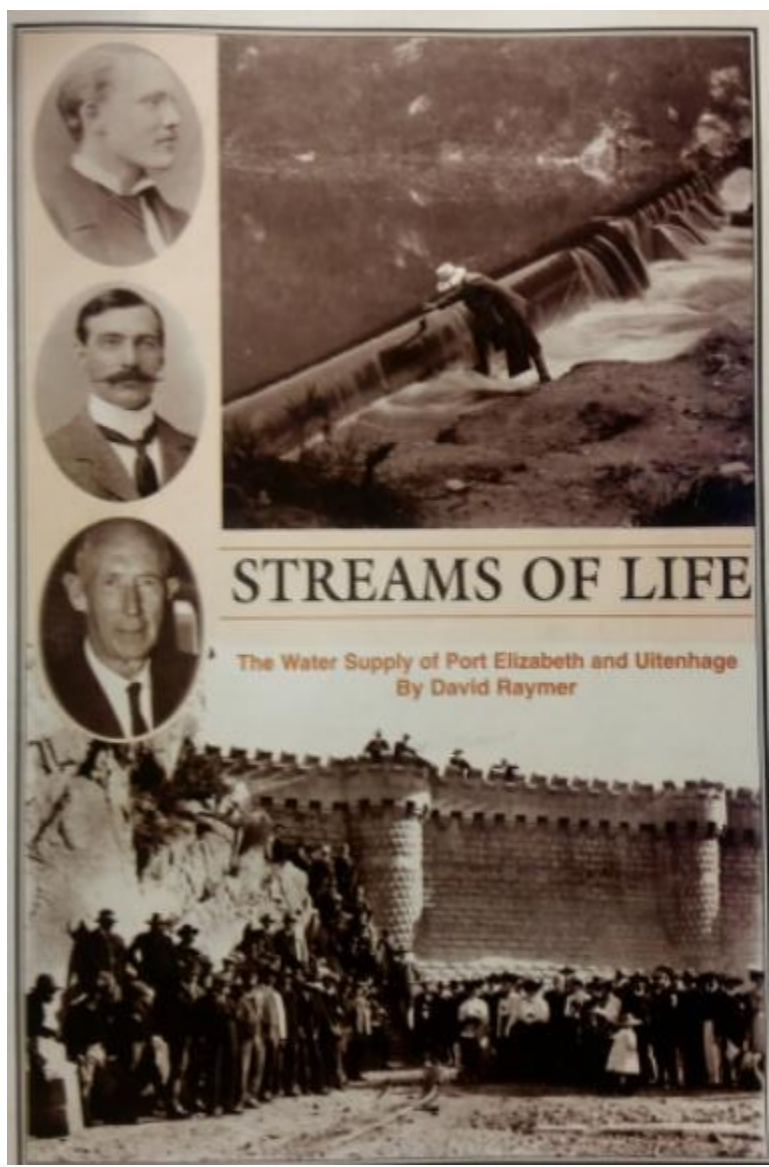
WATER RESOURCES FOR THE NMBM



WATER RESOURCES FOR THE NMBM



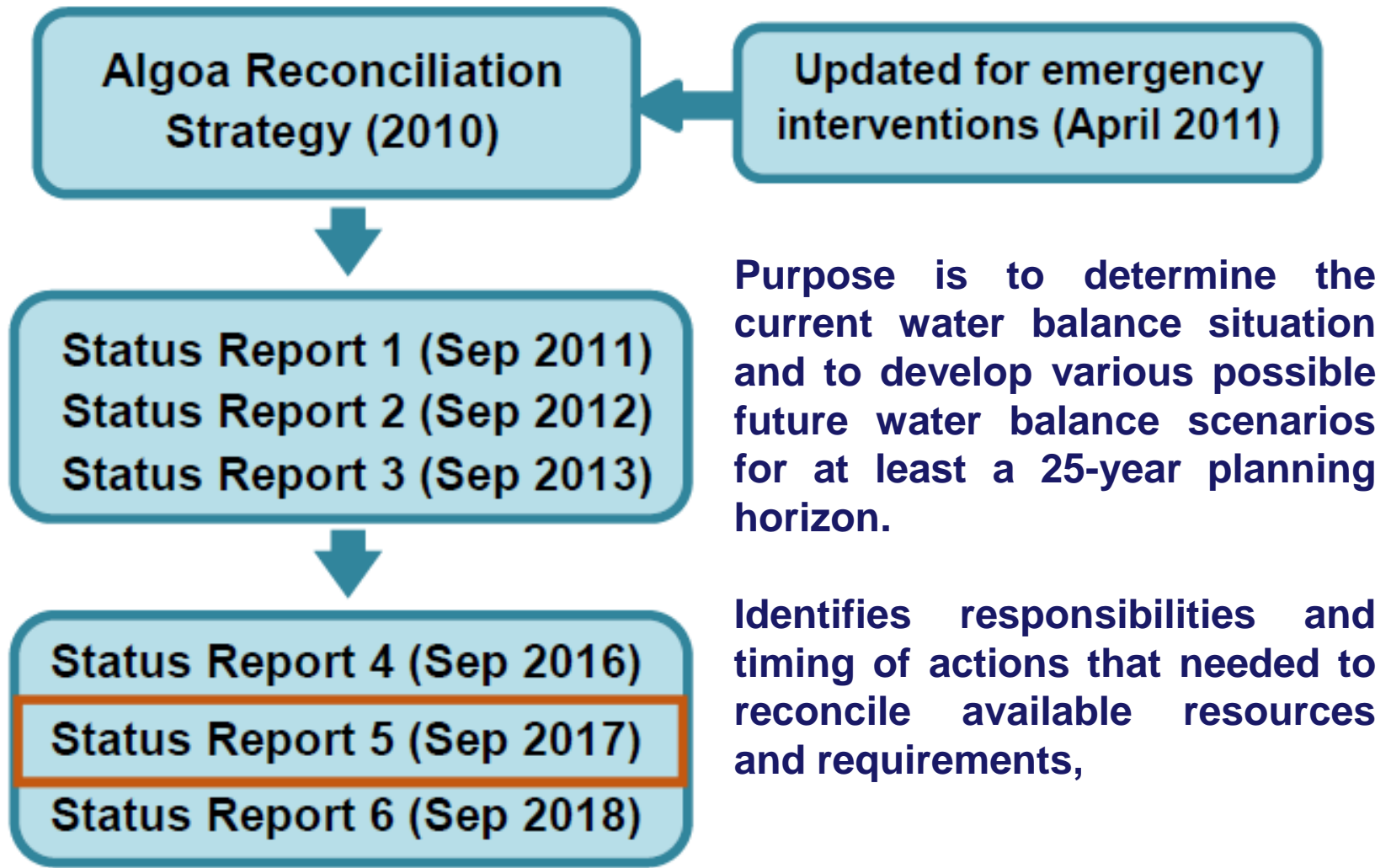
STRONG PRECEDENTS TO WATER PLANNING



Well documented by David Raymer, 2008



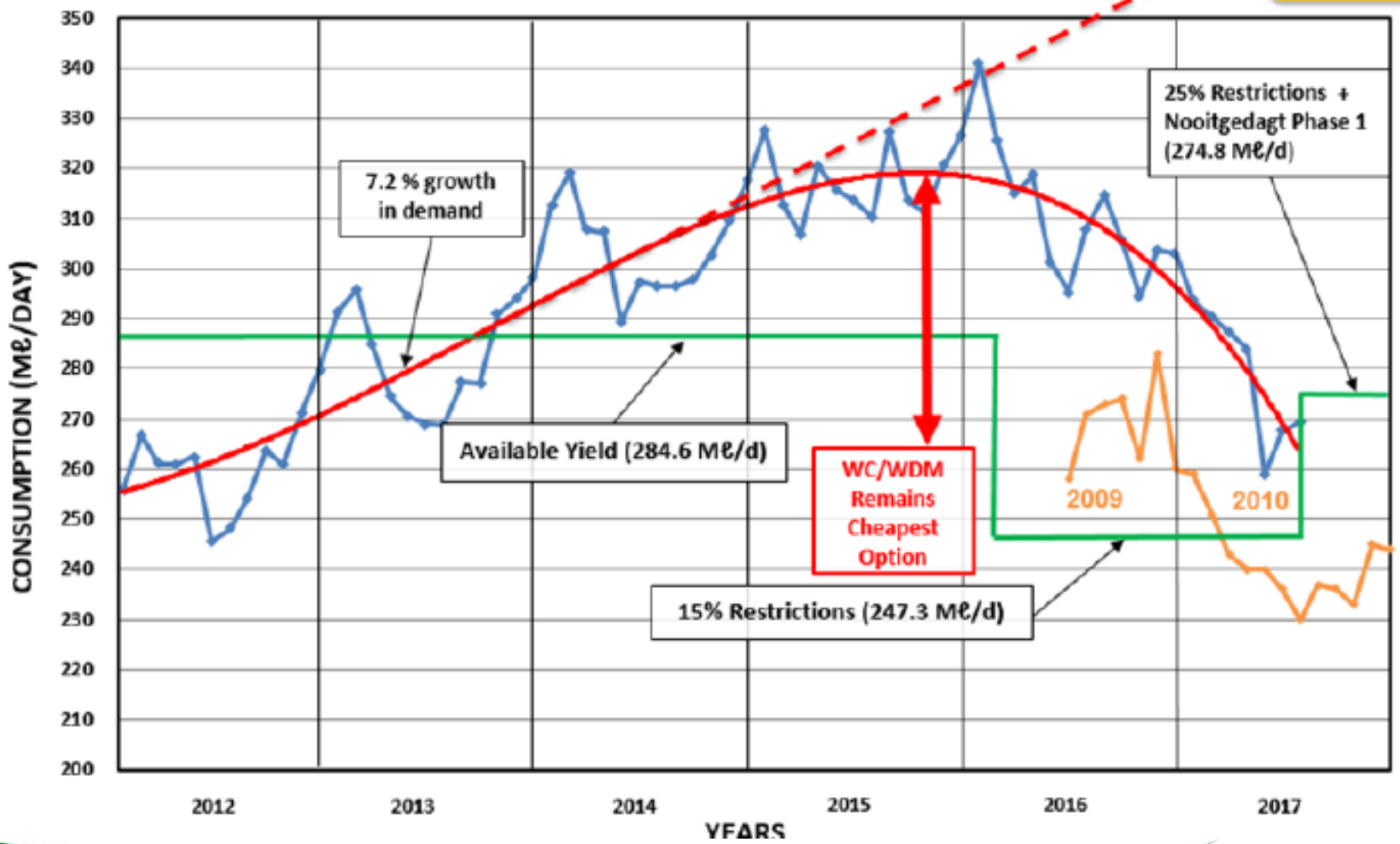
ALGOA RECONCILIATION STRATEGY



NMBM WATER USE

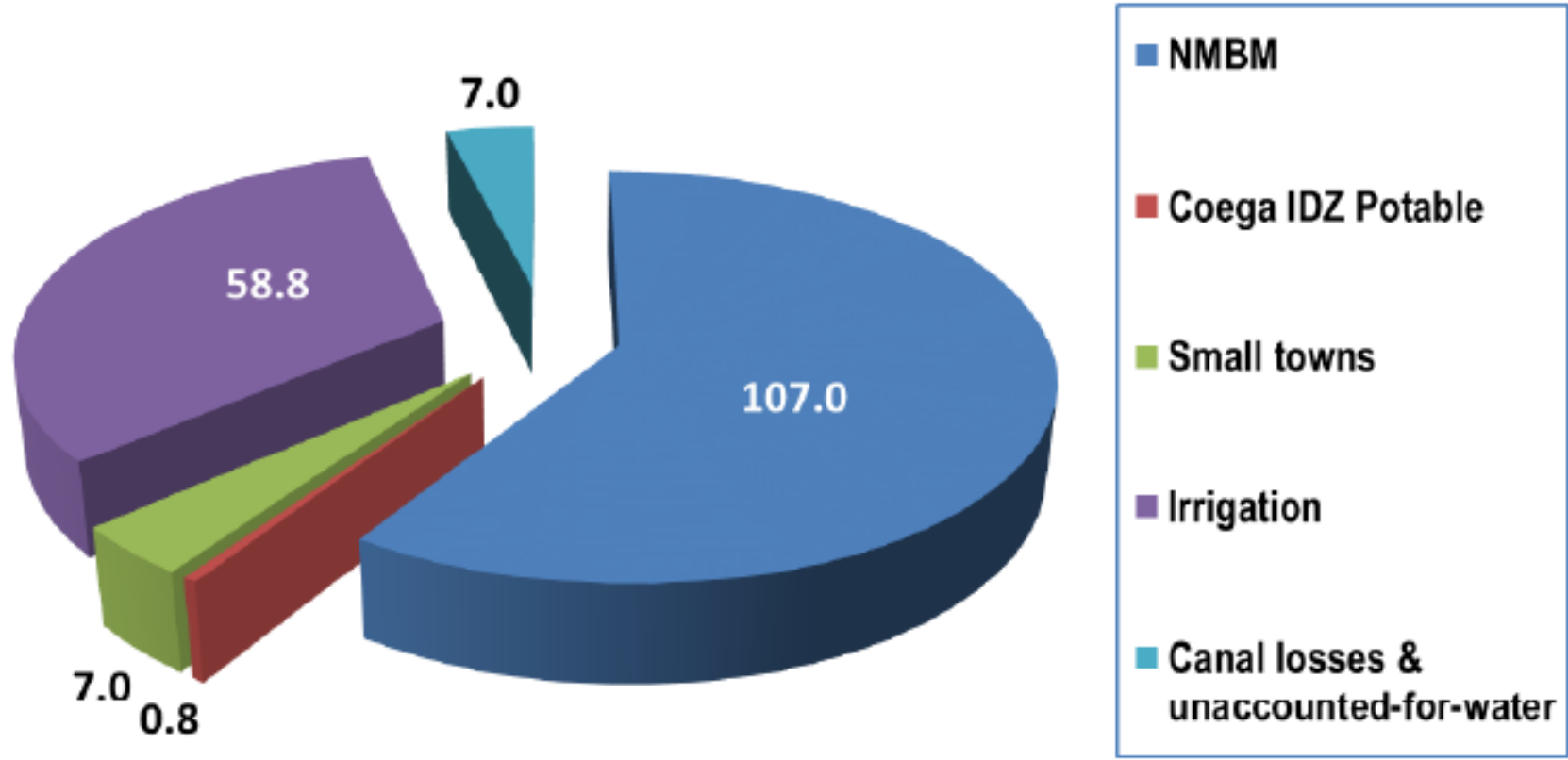
AVERAGE DAILY WATER CONSUMPTION FOR THE NMBM

381 Mℓ/d



ANNUAL USE (ALGOA WATER SUPPLY SYSTEM)

Current potable water use from the AWSS
(million m³/a)



AWSS AUGMENTATION FOCUS AREAS

- Water Conservation and Demand Management
- Nooitgedacht Low Level Scheme
 - Phase 1: 90 MI / day
 - Phase 2: 125 MI / day (Completed August 2017)
 - Phase 3: 160 MI / day
- Desalination
 - Schoenmakerskop
 - Coega Marine Servitude
 - Zwartkops River & Sea Salt options
- Groundwater
 - Coega Groundwater (30 MI / day)



AWSS AUGMENTATION FOCUS AREAS

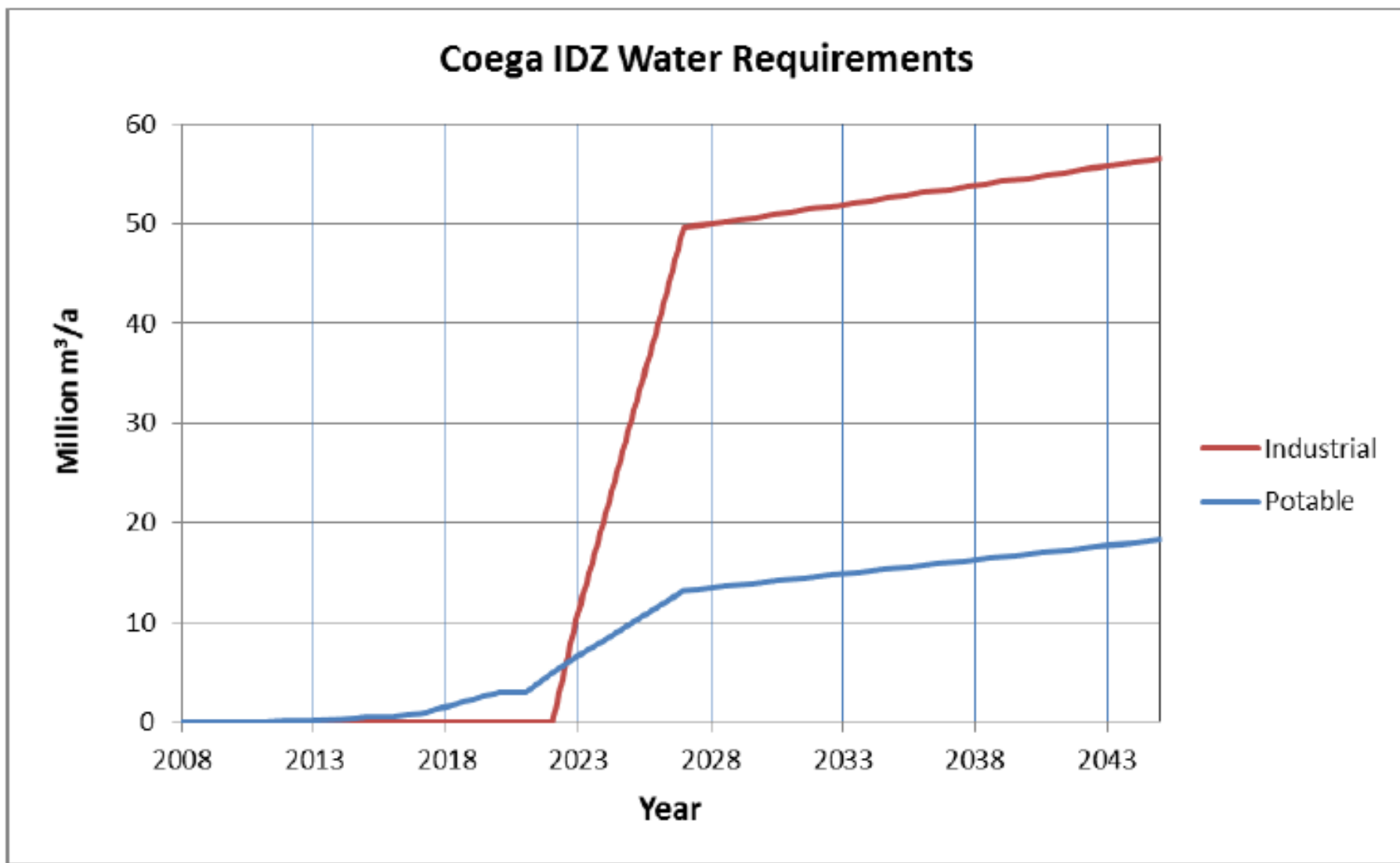
- Industrial Process Water
- Fish Water Flats Waste Water Treatment Works
 - First phase 30 MI / day
 - Second Phase 60 MI / day
 - Membrane Biological Reactors (MBR)
- Coega Waste Water Treatment Works
 - First phase 20 MI / day

Phase	Date	Volume per Phase (Mℓ/d)		Cumulative volume (Mℓ/d)	
		Domestic	Industrial	Domestic	Industrial
1	2019	20		20	
2	2024	20	10	40	10
3	2029	20	10	60	20
4	2034		20		40
5	2038		30		70



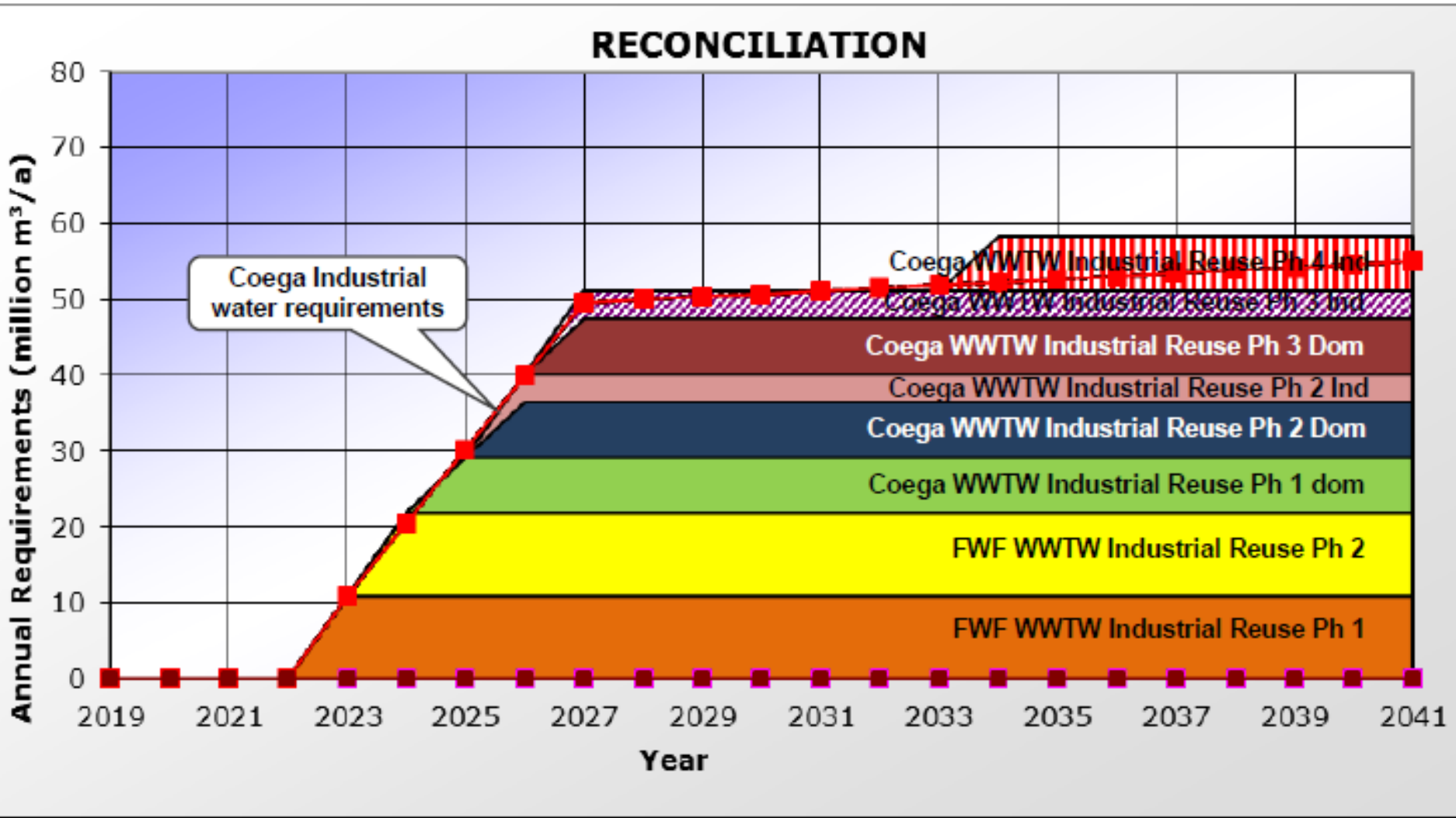
COEGA SEZ WATER REQUIREMENTS

- Interim Use of Potable Water

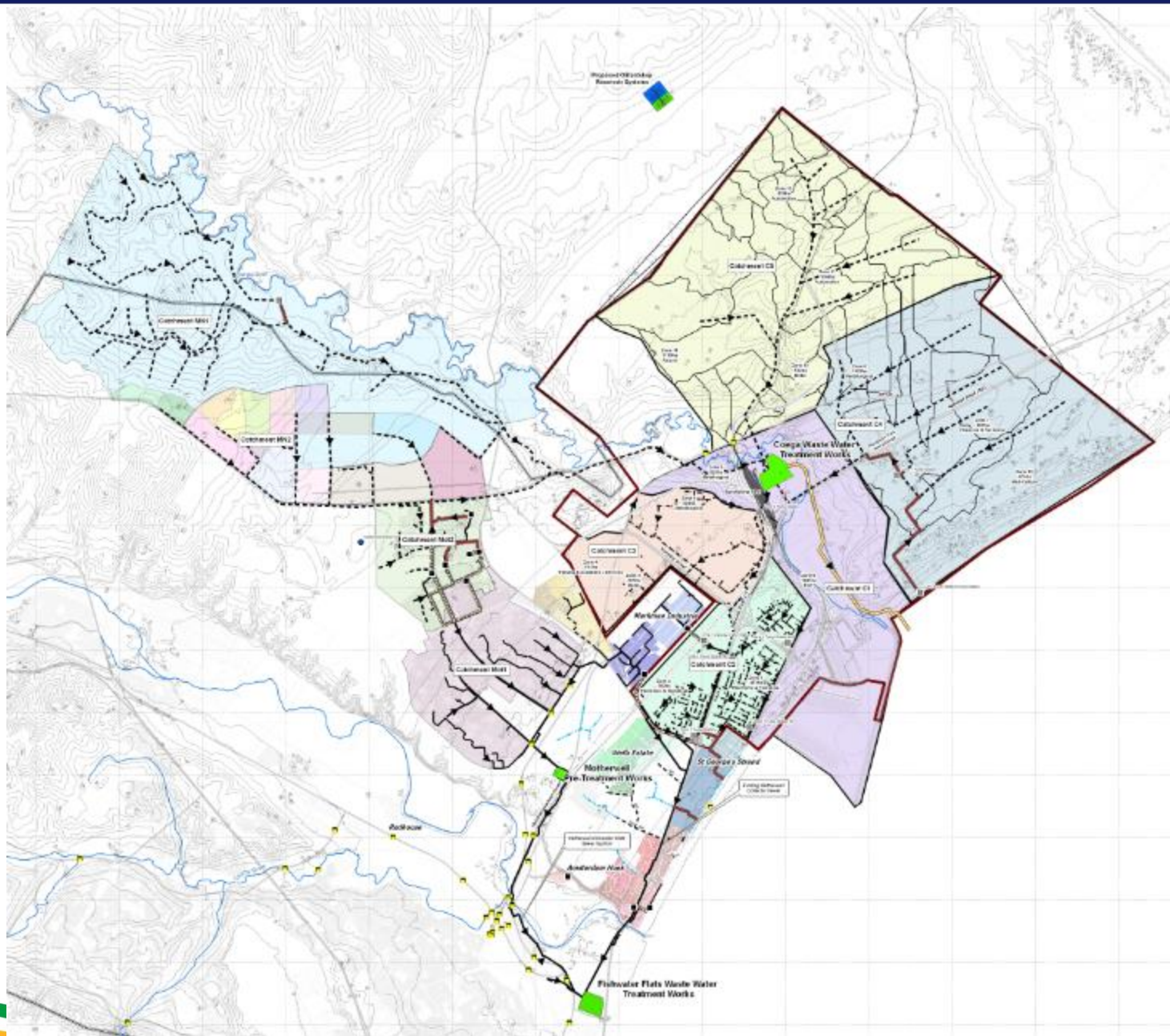


COEGA SEZ WATER REQUIREMENTS

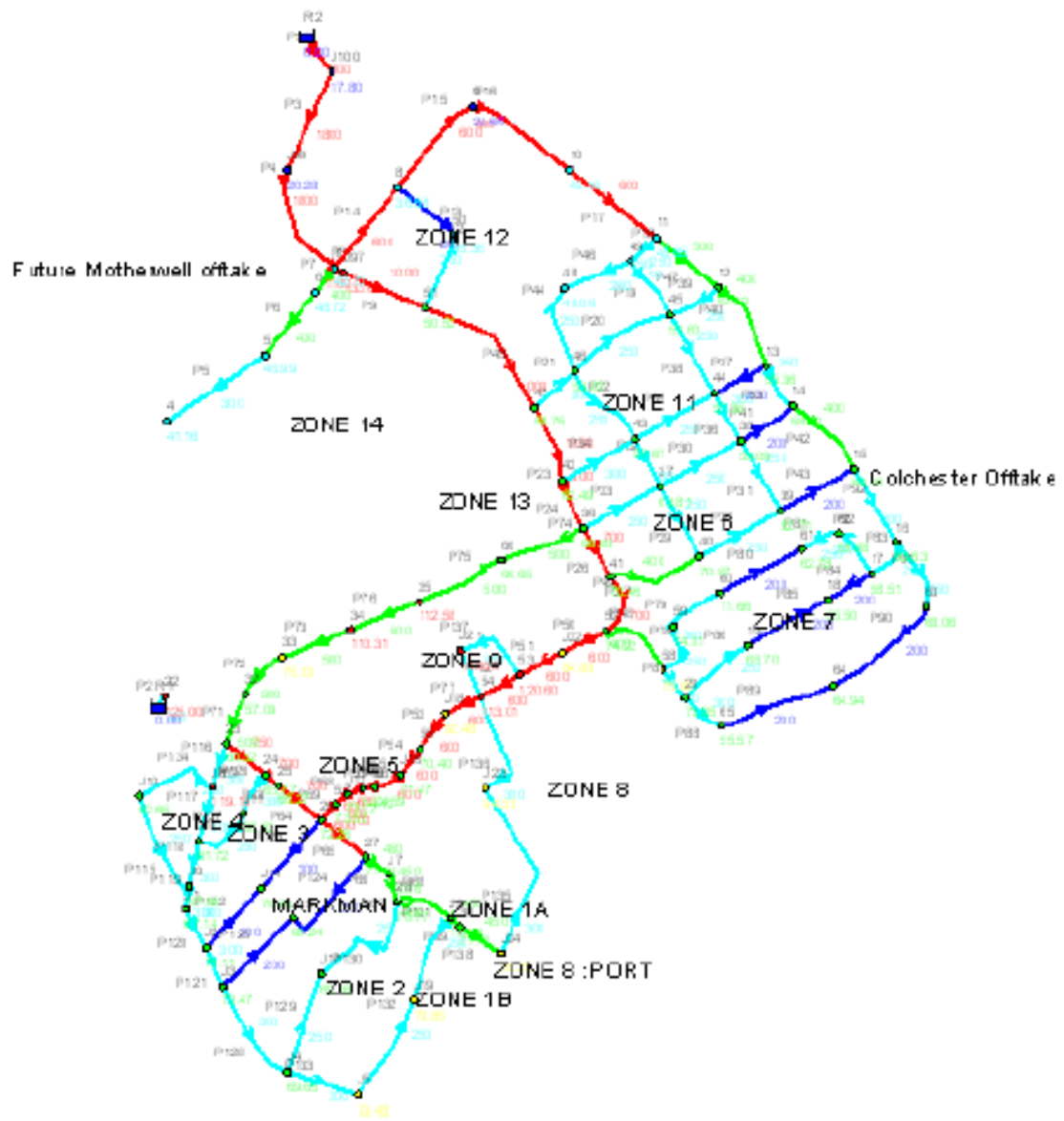
- Seven Growth Scenarios Developed




NMBM MASTER PLAN



COEGA SEZ BULK WATER, SEWAGE & RE



CONCLUSION

- Master Planning in Place to accommodate various growth scenarios
 - Scale and Uncertainty are key issues
 - Institutional issues are still a key focus area
 - Funding is a key issue
 - Environmental studies completed and / or in progress for various components
 - Collaboration is an imperative
 - Options for Industrial ecology / Industrial Symbiosis
- 



THANK YOU



COEGA
DEVELOPMENT CORPORATION

▪ right **PLACE** ▪ right **TIME** ▪ right **CHOICE**

B-BBEE LEVEL 3 CONTRIBUTOR
ISO 9001 14001 20001 27001 31000 OHSAS18001

