

2006 Fynmeet Sea Clutter Measurement Trial

Dataset Overview for 02-Aug-2006

Dr PL Herselman

2006 Fynmeet Sea Clutter Measurement Trial : Dataset Overview for 02-Aug-2006

by Dr PL Herselman

Published 06-Sep-2007 14:20:22

Copyright © 2006 Council for Scientific and Industrial Research, South Africa

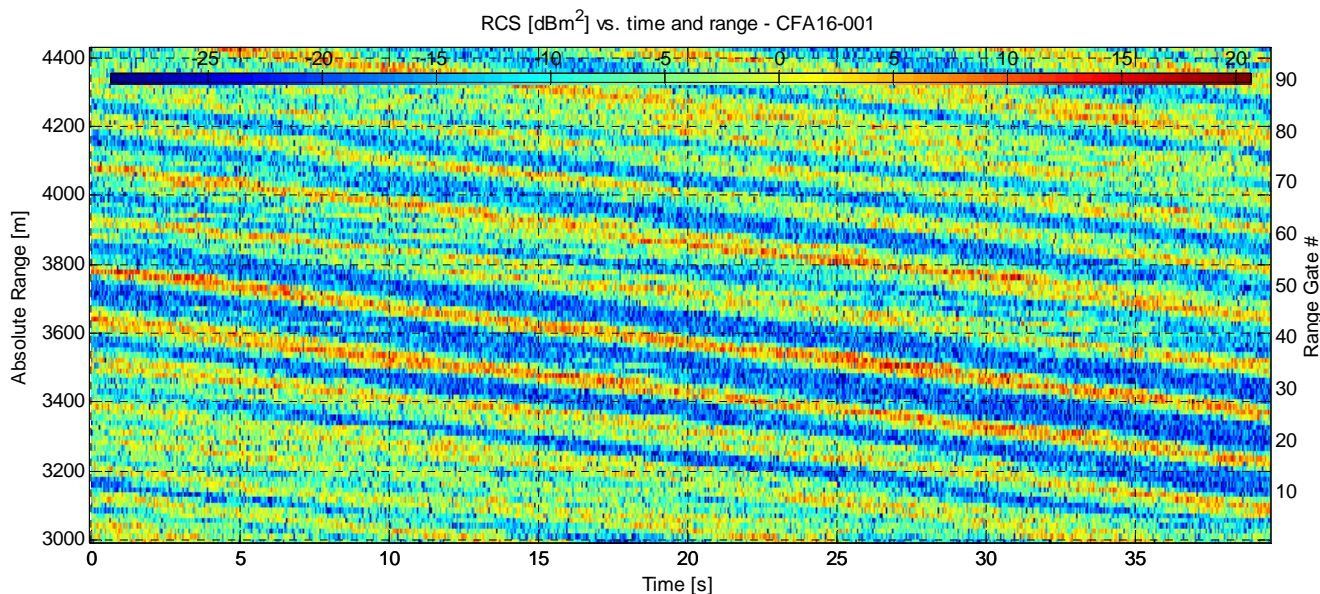
This document provides an overview for the datasets (or subset thereof) recorded on 02-Aug-2006 as part of the Fynmeet Sea Clutter Measurement Trial conducted at the Overberg Test Range at Arniston, South Africa. The trial was conducted over the period from 18 July to 4 August 2006. These datasets have been stored in structured Mathworks Matlab (*.mat) files and will be made available to research institutes or universities upon request. For more information contact Dr PL Herselman at pherselman@csir.co.za.

Copyright CSIR. The copyright of this document is the property of the CSIR. The document is issued for the sole purpose for which it is supplied, on the express conditions that it may not be copied in whole or in part, used by or disclosed to others, except as authorised in writing by the CSIR.

Table of Contents

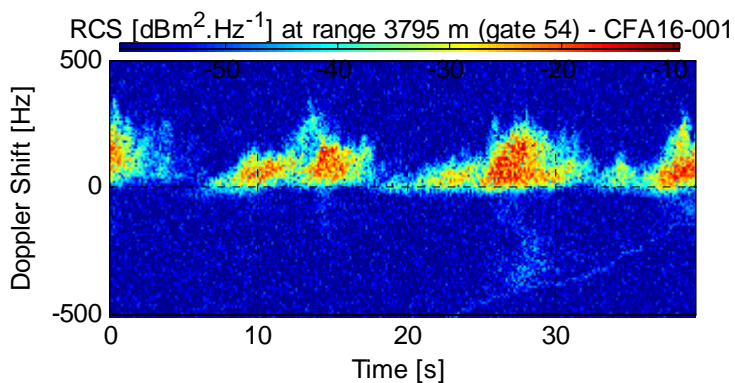
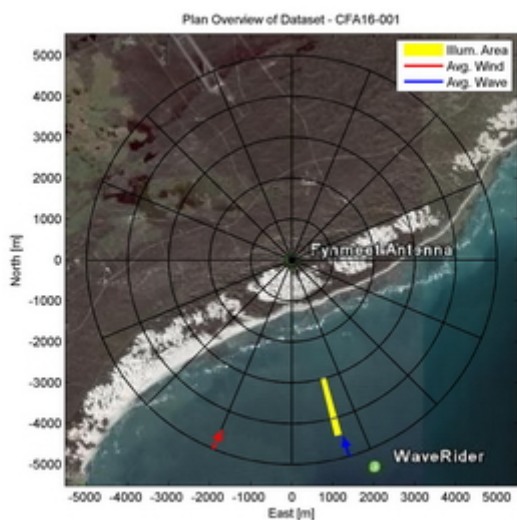
Dataset CFA16-001..... 1
Dataset CFA16-002..... 2
Dataset CFA16-003..... 3
Dataset CFA16-004..... 4
Dataset CFA16-005..... 5
Dataset CFA16-006..... 6
Dataset CFA16-007..... 7
Dataset CFA16-008..... 9
Dataset CFA16-009..... 10
Dataset CFA16-010..... 11
Dataset CFA16-011..... 12
Dataset CFA16-012..... 13
Dataset CFA16-013..... 14
Dataset CFA16-014..... 15
Dataset CFA16-015..... 16
Dataset CFA16-016..... 17
Dataset CFA16-017..... 18
Dataset CFA16-018..... 19
Dataset CFA16-019..... 20
Dataset CFA16-020..... 21
Dataset CFA16-021..... 22
Dataset CFA16-022..... 23

Dataset CFA16-001

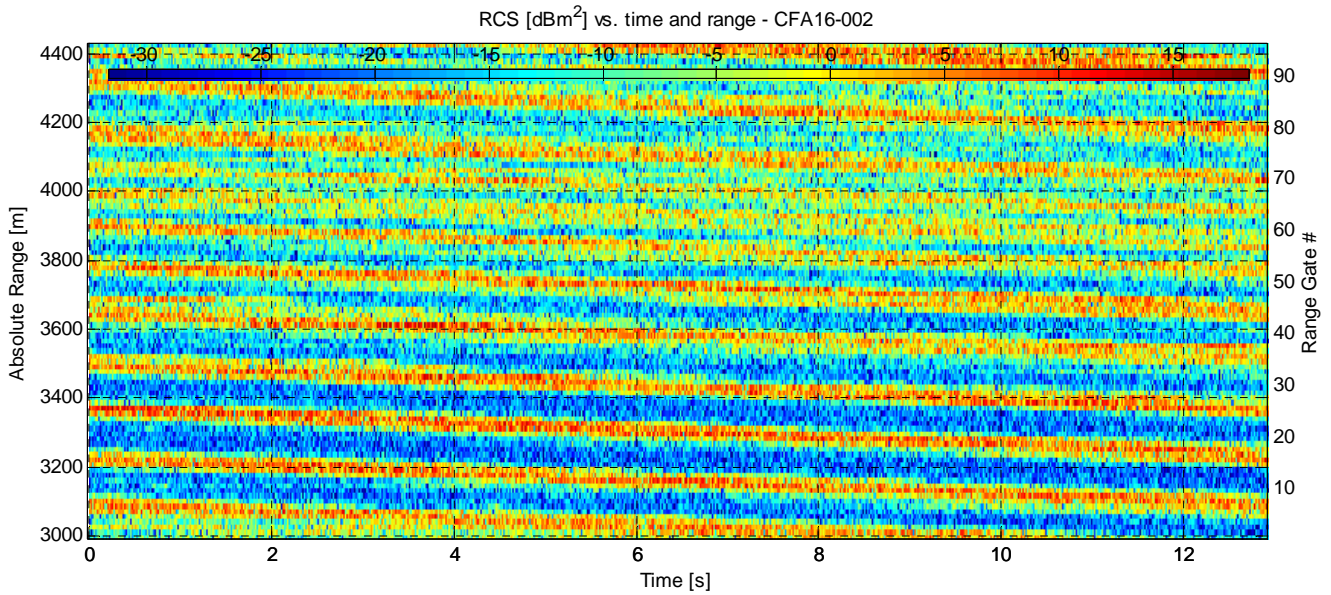


Experiment Summary	Value	Radar Setup	Value
Type	Sea Clutter	Tx Frequency	6.9 GHz
Date	02-Aug-2006	PRF	5 kHz
Start Time	10:54:59.187	Tracking Range	3000 m
Duration	197520 PRI's (39.5038 s)	Range Extend	1440 m (96 gates), 15 m res.
Original File	PF060802.044	Waveform Type	Fixed Frequency
Original Path	\20060802_ifs	Waveform Bandwidth	N/A
Processor Version	FMSCP Ver 01.21	Waveform File	SC_Fixed_256BL.txt

Environment	Value	Geometry	Value	Processing	Value
Inst. Wind	15.9 kts, 202.5 deg. N	Grazing Angle	0.853 - 1.27 deg.	Odd Gates Offset	-4.6831-2.2351i
Wind Gust	26.8 kts, 218 deg. N	Antenna Azm.	165.2 deg. N	Even Gates Offset	4.0208-3.9197i
8hr Avg. Wind	12 kts, 201.6 deg. N	Antenna Elv.	-1.208 deg.	I/Q Imbalance	Bypassed
Wave (SWH)	3.4 m, 163.6 deg. N	Antenna BW.	2 deg. Az, 2 deg. El	Complex Conj.	Applied
		GPS Data	Not applicable	Calibr. Coeff.	187.7 dB

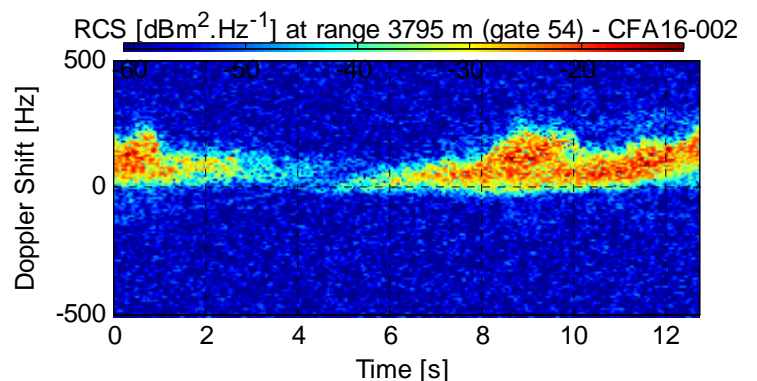
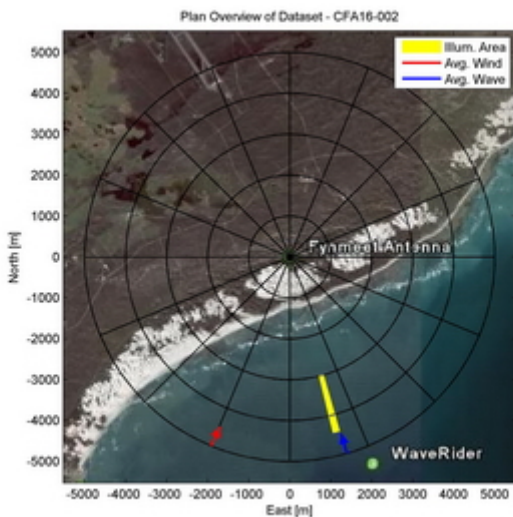


Dataset CFA16-002

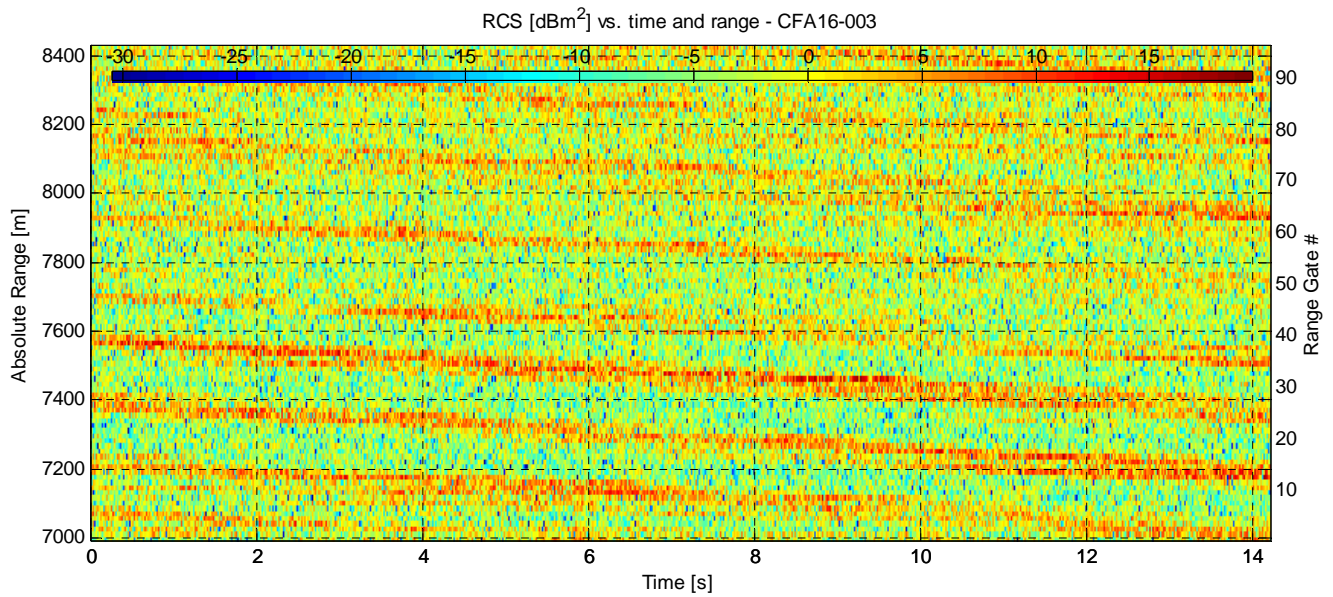


Experiment Summary	Value	Radar Setup	Value
Type	Sea Clutter	Tx Frequency	6.9 GHz
Date	02-Aug-2006	PRF	5 kHz
Start Time	10:55:38.699	Tracking Range	3000 m
Duration	64580 PRI's (12.9158 s)	Range Extend	1440 m (96 gates), 15 m res.
Original File	PF060802.044	Waveform Type	Fixed Frequency
Original Path	\20060802_ifs	Waveform Bandwidth	N/A
Processor Version	FMSCP Ver 01.21	Waveform File	SC_Fixed_256BL.txt

Environment	Value	Geometry	Value	Processing	Value
Inst. Wind	15.9 kts, 202.5 deg. N	Grazing Angle	0.853 - 1.27 deg.	Odd Gates Offset	-4.742-2.0129i
Wind Gust	26.8 kts, 218 deg. N	Antenna Azm.	165.2 deg. N	Even Gates Offset	4.1439-3.8761i
8hr Avg. Wind	12 kts, 201.6 deg. N	Antenna Elv.	-1.208 deg.	I/Q Imbalance	Bypassed
Wave (SWH)	3.4 m, 163.7 deg. N	Antenna BW.	2 deg. Az, 2 deg. El	Complex Conj.	Applied
		GPS Data	Not applicable	Calibr. Coeff.	187.7 dB

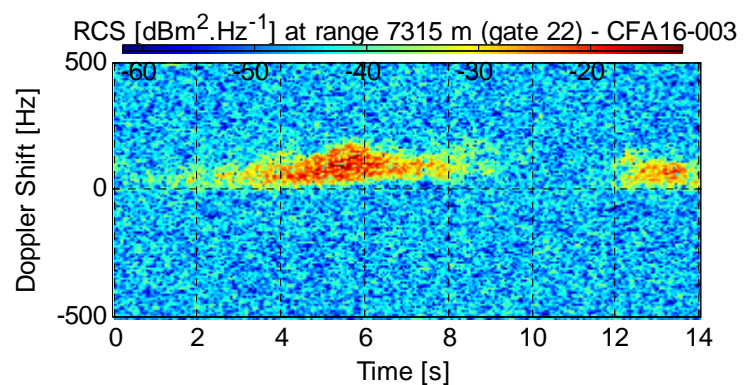
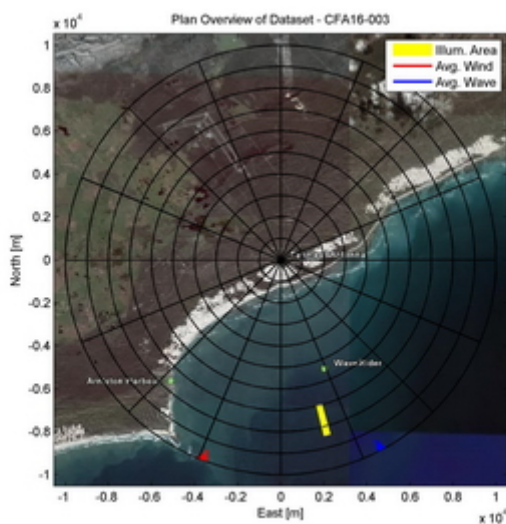


Dataset CFA16-003

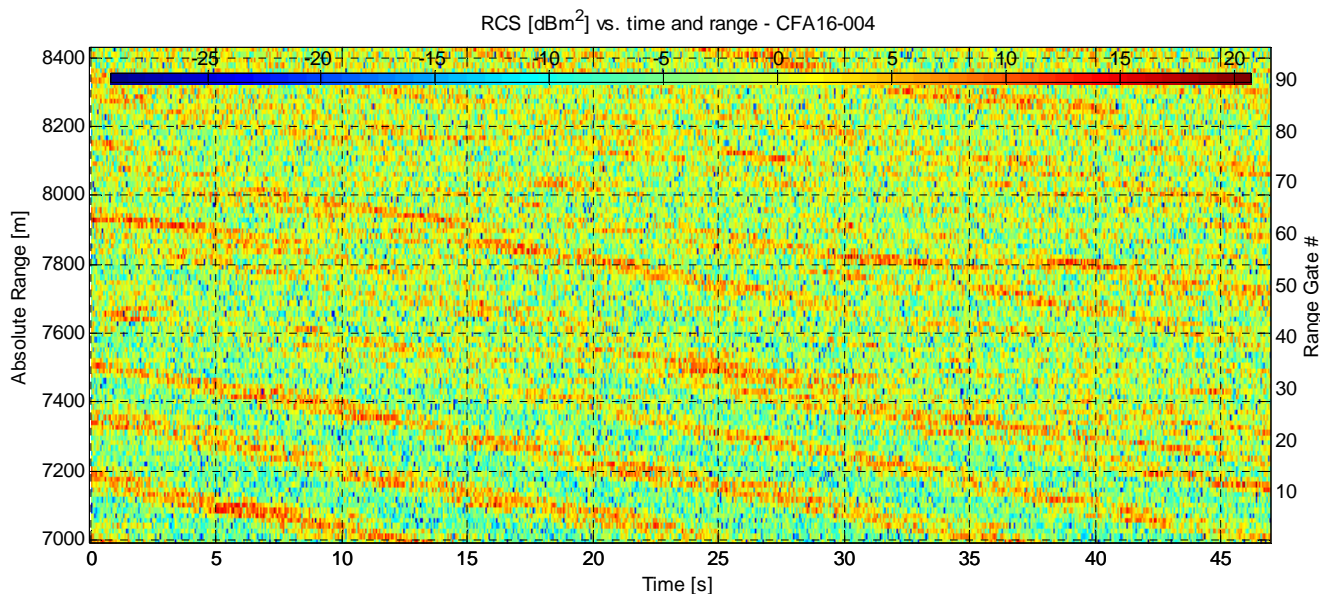


Experiment Summary	Value	Radar Setup	Value
Type	Sea Clutter	Tx Frequency	6.9 GHz
Date	02-Aug-2006	PRF	5 kHz
Start Time	11:17:42.484	Tracking Range	7000 m
Duration	71040 PRI's (14.2078 s)	Range Extend	1440 m (96 gates), 15 m res.
Original File	PF060802.045	Waveform Type	Fixed Frequency
Original Path	\20060802_ifs	Waveform Bandwidth	N/A
Processor Version	FMSCP Ver 01.21	Waveform File	SC_Fixed_256BL.txt

Environment	Value	Geometry	Value	Processing	Value
Inst. Wind	17 kts, 201.3 deg. N	Grazing Angle	0.427 - 0.525 deg.	Odd Gates Offset	3.844-3.5095i
Wind Gust	30.7 kts, 217 deg. N	Antenna Azm.	165.2 deg. N	Even Gates Offset	-4.4405-1.4737i
8hr Avg. Wind	12.3 kts, 201.2 deg. N	Antenna Elv.	-1.192 deg.	I/Q Imbalance	Bypassed
Wave (SWH)	3.49 m, 152.6 deg. N	Antenna BW.	2 deg. Az, 2 deg. El	Complex Conj.	Applied
		GPS Data	Not applicable	Calibr. Coeff.	187.7 dB

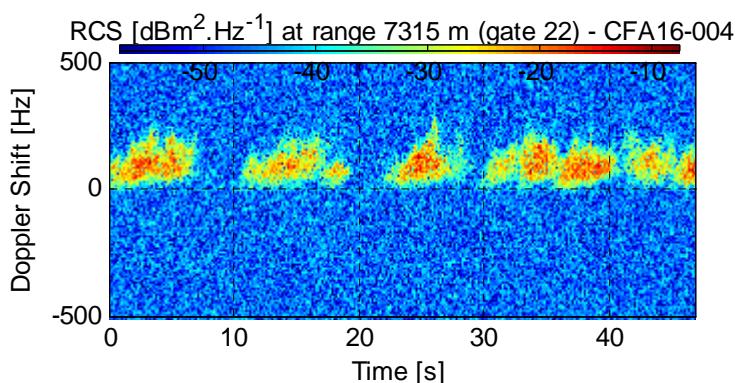
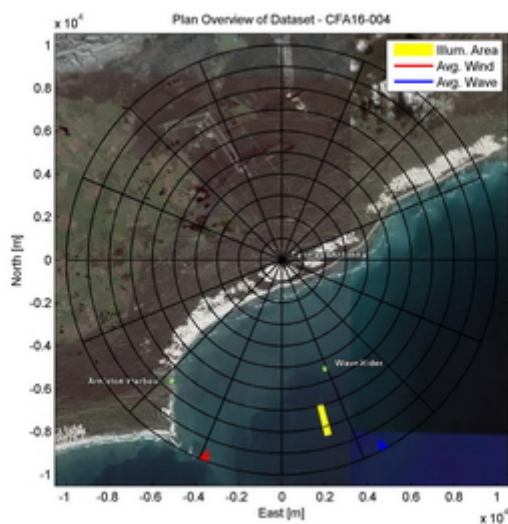


Dataset CFA16-004

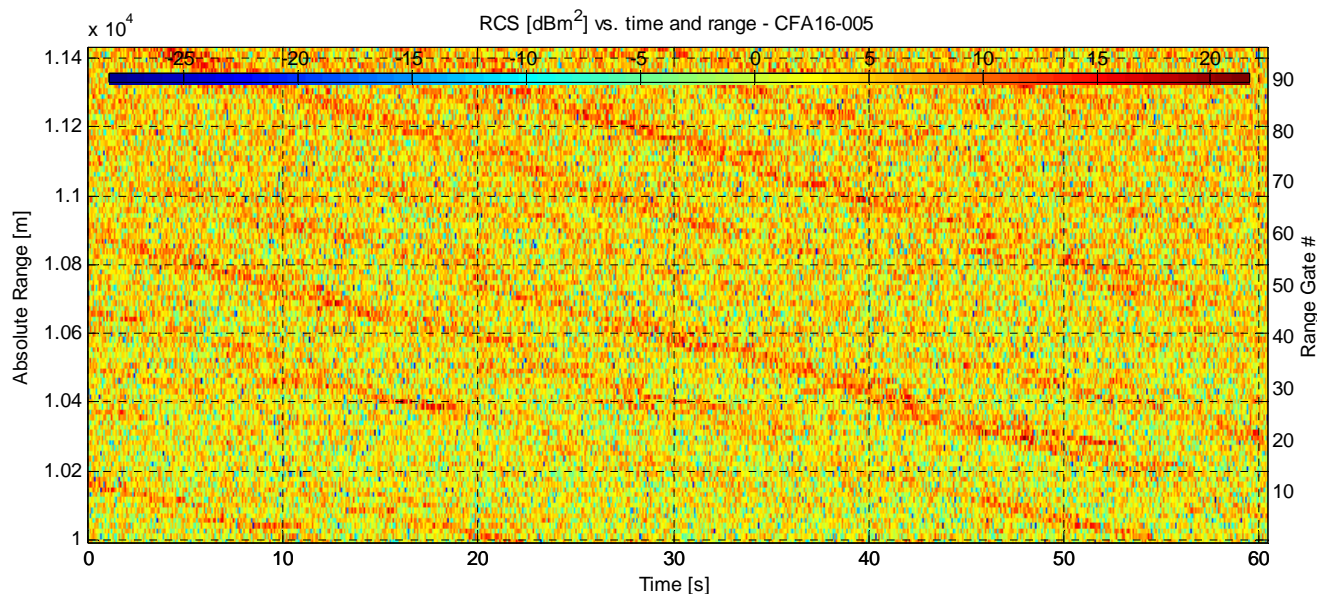


Experiment Summary	Value	Radar Setup	Value
Type	Sea Clutter	Tx Frequency	6.9 GHz
Date	02-Aug-2006	PRF	5 kHz
Start Time	11:17:56.700	Tracking Range	7000 m
Duration	234750 PRI's (46.9498 s)	Range Extend	1440 m (96 gates), 15 m res.
Original File	PF060802.045	Waveform Type	Fixed Frequency
Original Path	\20060802_ifs	Waveform Bandwidth	N/A
Processor Version	FMSCP Ver 01.21	Waveform File	SC_Fixed_256BL.txt

Environment	Value	Geometry	Value	Processing	Value
Inst. Wind	17 kts, 201.3 deg. N	Grazing Angle	0.427 - 0.525 deg.	Odd Gates Offset	3.8286-3.4417i
Wind Gust	30.7 kts, 217 deg. N	Antenna Azm.	165.2 deg. N	Even Gates Offset	-4.4483-1.5462i
8hr Avg. Wind	12.3 kts, 201.2 deg. N	Antenna Elv.	-1.192 deg.	I/Q Imbalance	Bypassed
Wave (SWH)	3.49 m, 152.6 deg. N	Antenna BW.	2 deg. Az, 2 deg. El	Complex Conj.	Applied
		GPS Data	Not applicable	Calibr. Coeff.	187.7 dB

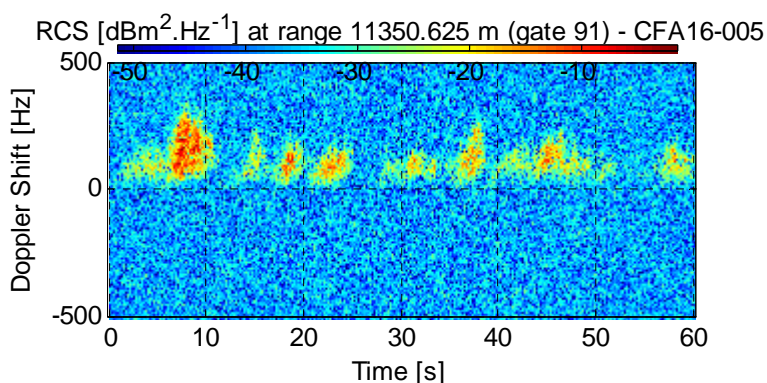
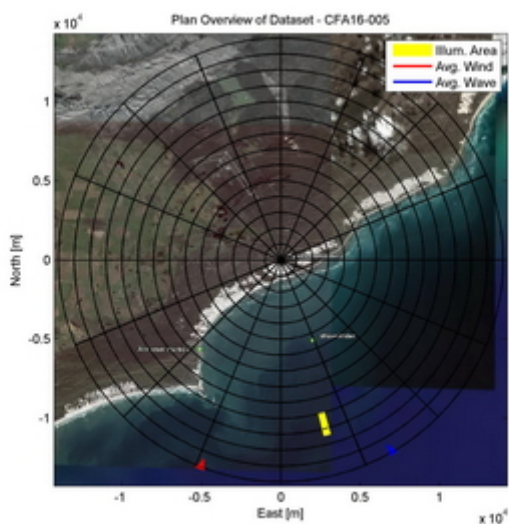


Dataset CFA16-005

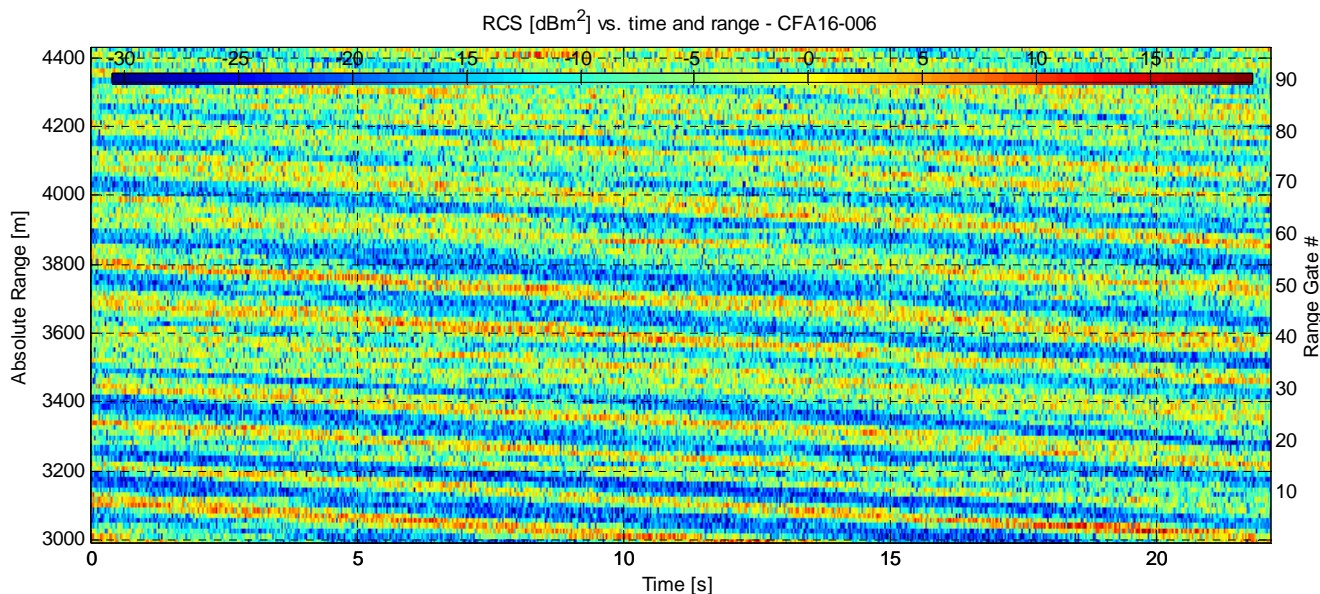


Experiment Summary	Value	Radar Setup	Value
Type	Sea Clutter	Tx Frequency	6.9 GHz
Date	02-Aug-2006	PRF	5 kHz
Start Time	11:19:31.930	Tracking Range	10000.6 m
Duration	301842 PRI's (60.3682 s)	Range Extend	1440 m (96 gates), 15 m res.
Original File	PF060802.046	Waveform Type	Fixed Frequency
Original Path	\20060802_ifs	Waveform Bandwidth	N/A
Processor Version	FMSCP Ver 01.21	Waveform File	SC_Fixed_256BL.txt

Environment	Value	Geometry	Value	Processing	Value
Inst. Wind	17.1 kts, 201.2 deg. N	Grazing Angle	0.298 - 0.35 deg.	Odd Gates Offset	3.9056-3.7578i
Wind Gust	30.7 kts, 217 deg. N	Antenna Azm.	165.2 deg. N	Even Gates Offset	-4.4123-1.8284i
8hr Avg. Wind	12.3 kts, 201.2 deg. N	Antenna Elv.	-1.198 deg.	I/Q Imbalance	Bypassed
Wave (SWH)	3.5 m, 150.8 deg. N	Antenna BW.	2 deg. Az, 2 deg. El	Complex Conj.	Applied
		GPS Data	Not applicable	Calibr. Coeff.	187.7 dB

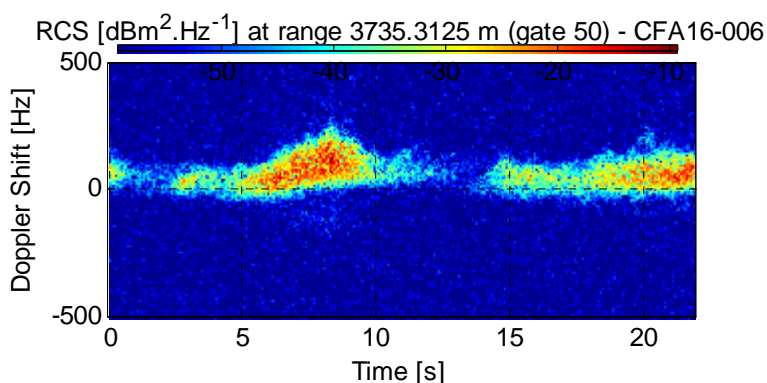
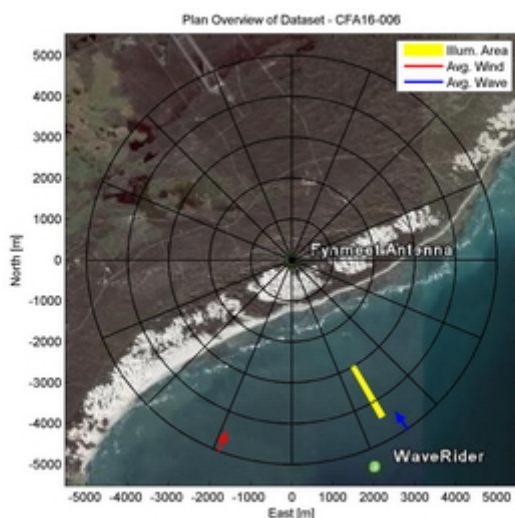


Dataset CFA16-006

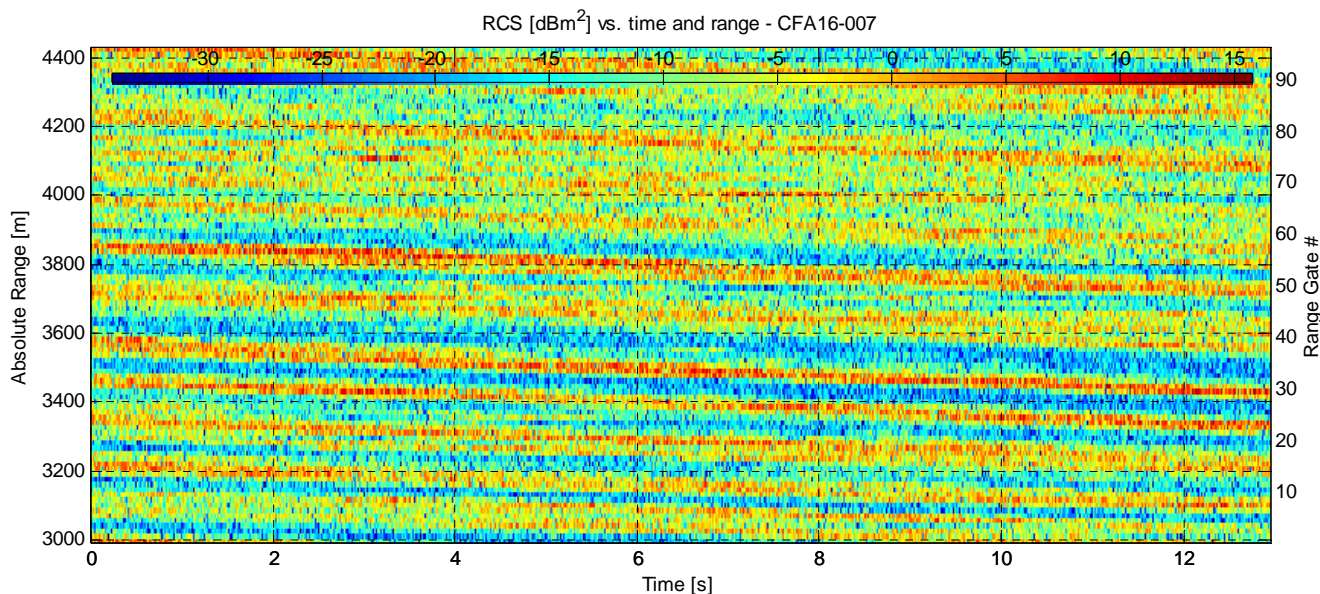


Experiment Summary	Value	Radar Setup	Value
Type	Sea Clutter	Tx Frequency	6.9 GHz
Date	02-Aug-2006	PRF	5 kHz
Start Time	11:26:17.421	Tracking Range	3000.31 m
Duration	110560 PRI's (22.1118 s)	Range Extend	1440 m (96 gates), 15 m res.
Original File	PF060802.050	Waveform Type	Fixed Frequency
Original Path	\\20060802_ifs_contd_2	Waveform Bandwidth	N/A
Processor Version	FMSCP Ver 01.22	Waveform File	SC_Fixed_256BL.txt

Environment	Value	Geometry	Value	Processing	Value
Inst. Wind	17.4 kts, 200.9 deg. N	Grazing Angle	0.853 - 1.27 deg.	Odd Gates Offset	-4.1-1.8116i
Wind Gust	30.7 kts, 217 deg. N	Antenna Azm.	150.1 deg. N	Even Gates Offset	3.9-3.6404i
8hr Avg. Wind	12.4 kts, 201.1 deg. N	Antenna Elv.	-1.156 deg.	I/Q Imbalance	Bypassed
Wave (SWH)	3.52 m, 145.9 deg. N	Antenna BW.	2 deg. Az, 2 deg. El	Complex Conj.	Applied
		GPS Data	Not applicable	Calibr. Coeff.	187.7 dB

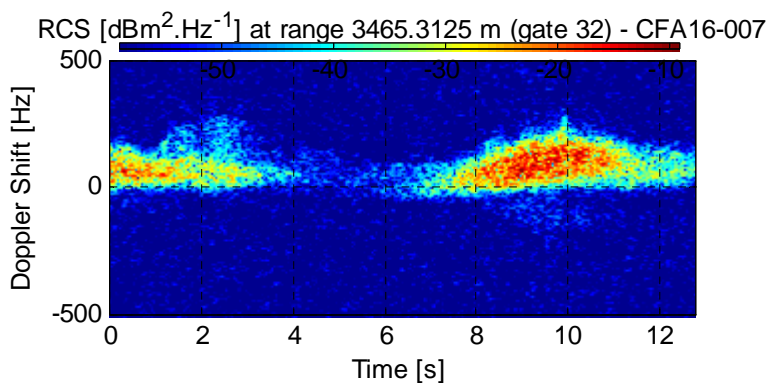
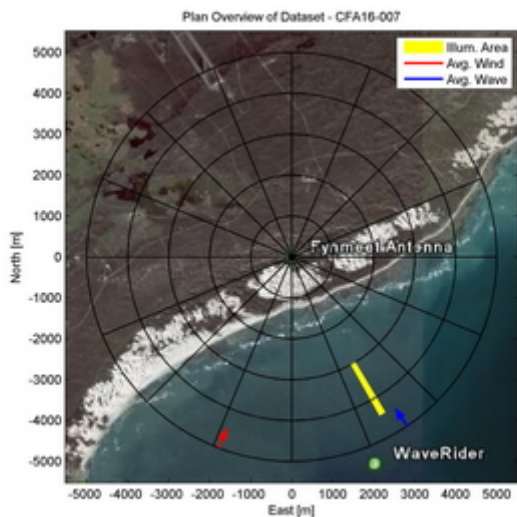


Dataset CFA16-007

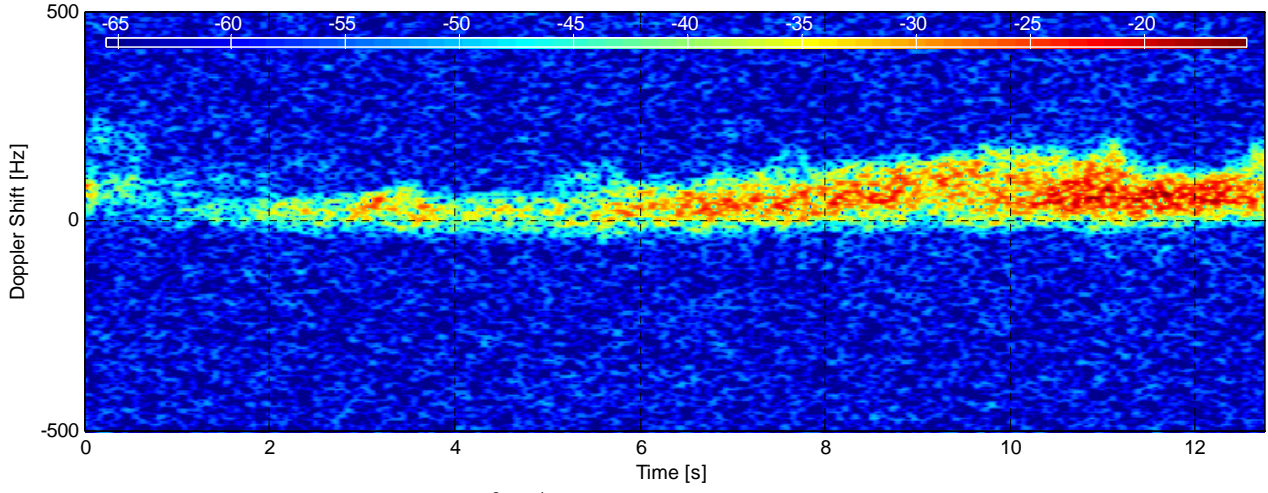


Experiment Summary	Value	Radar Setup	Value
Type	Sea Clutter	Tx Frequency	6.9 GHz
Date	02-Aug-2006	PRF	5 kHz
Start Time	11:26:39.541	Tracking Range	3000.31 m
Duration	64720 PRI's (12.9438 s)	Range Extend	1440 m (96 gates), 15 m res.
Original File	PF060802.050	Waveform Type	Fixed Frequency
Original Path	\\20060802_ifs_contd_2	Waveform Bandwidth	N/A
Processor Version	FMSCP Ver 01.22	Waveform File	SC_Fixed_256BL.txt

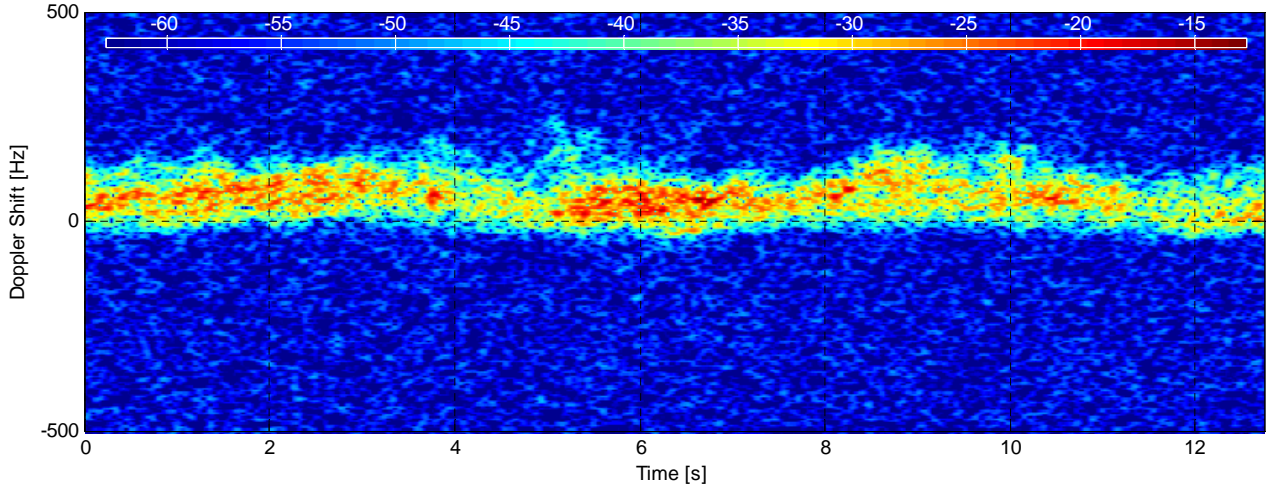
Environment	Value	Geometry	Value	Processing	Value
Inst. Wind	17.4 kts, 200.9 deg. N	Grazing Angle	0.853 - 1.27 deg.	Odd Gates Offset	-4.0993-1.4544i
Wind Gust	30.7 kts, 217 deg. N	Antenna Azm.	150.1 deg. N	Even Gates Offset	3.9874-3.7727i
8hr Avg. Wind	12.4 kts, 201.1 deg. N	Antenna Elv.	-1.156 deg.	I/Q Imbalance	Bypassed
Wave (SWH)	3.52 m, 145.9 deg. N	Antenna BW.	2 deg. Az, 2 deg. El	Complex Conj.	Applied
		GPS Data	Not applicable	Calibr. Coeff.	187.7 dB



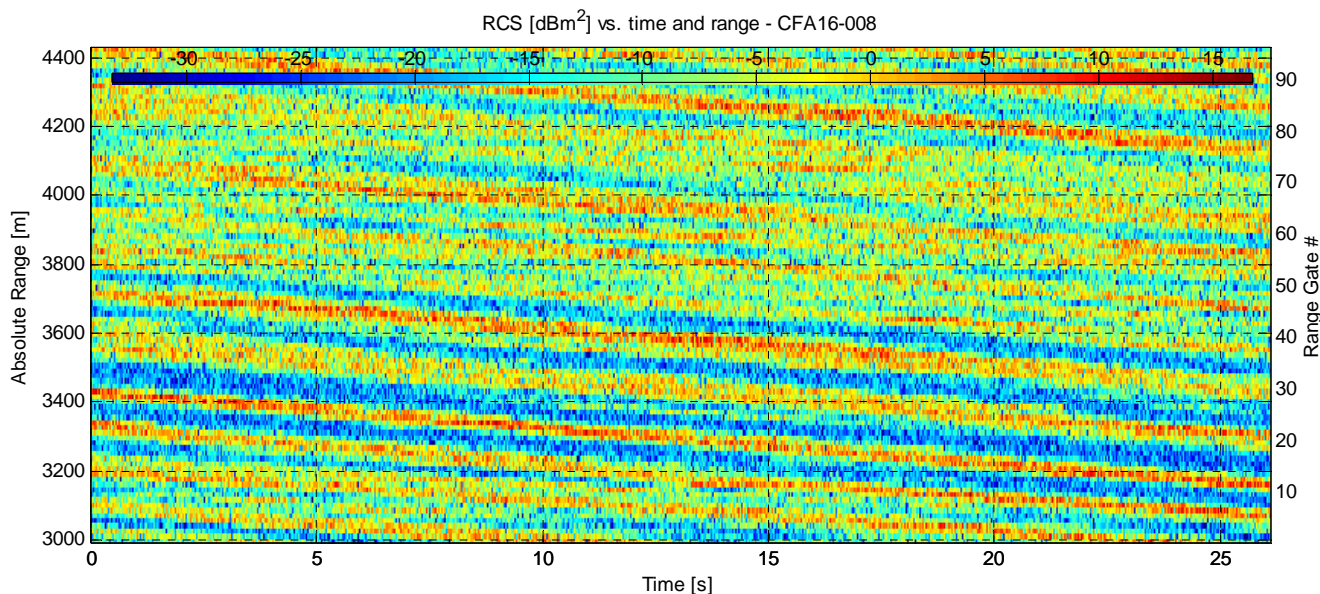
RCS [$\text{dBm}^2 \cdot \text{Hz}^{-1}$] at range 3615.3125 m (gate 42) - CFA16-007



RCS [$\text{dBm}^2 \cdot \text{Hz}^{-1}$] at range 4065.3125 m (gate 72) - CFA16-007

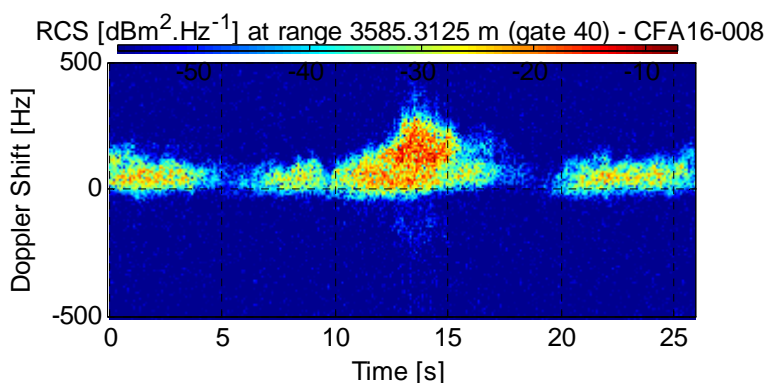
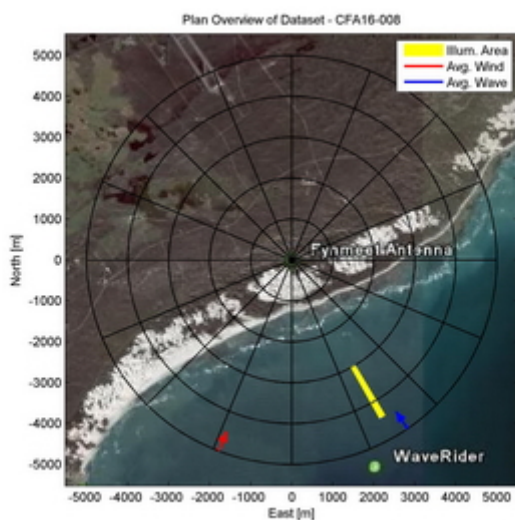


Dataset CFA16-008

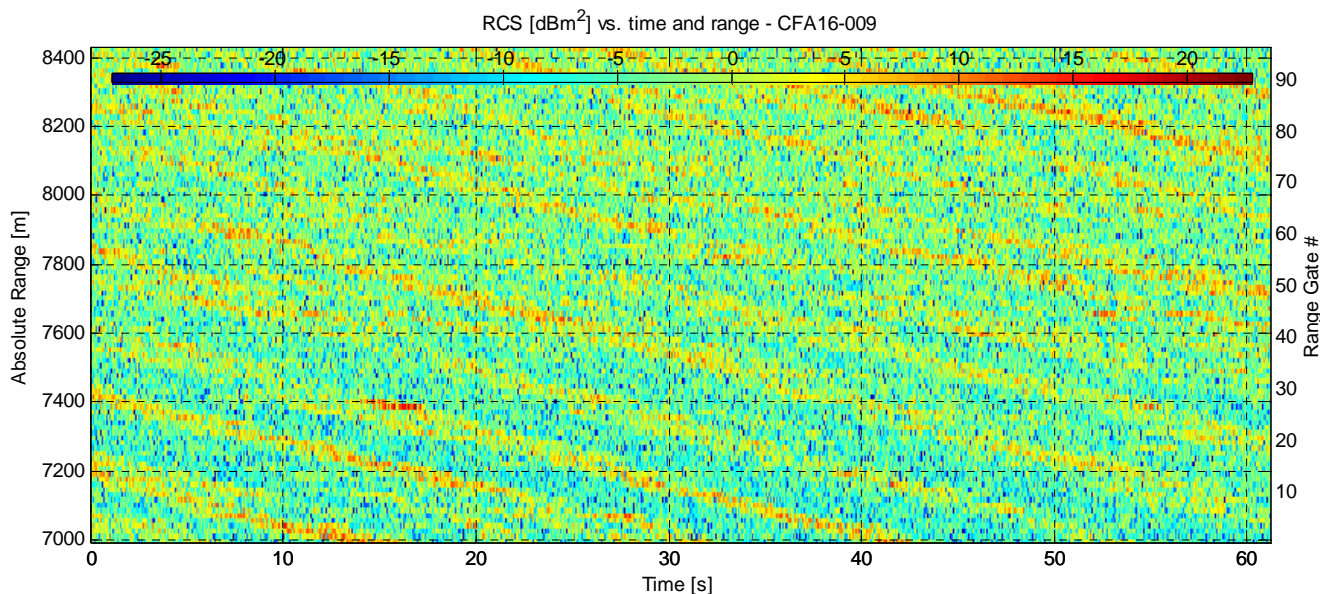


Experiment Summary	Value	Radar Setup	Value
Type	Sea Clutter	Tx Frequency	6.9 GHz
Date	02-Aug-2006	PRF	5 kHz
Start Time	11:26:52.493	Tracking Range	3000.31 m
Duration	130470 PRI's (26.0938 s)	Range Extend	1440 m (96 gates), 15 m res.
Original File	PF060802.050	Waveform Type	Fixed Frequency
Original Path	\20060802_ifs_contd_2	Waveform Bandwidth	N/A
Processor Version	FMSCP Ver 01.22	Waveform File	SC_Fixed_256BL.txt

Environment	Value	Geometry	Value	Processing	Value
Inst. Wind	17.4 kts, 200.9 deg. N	Grazing Angle	0.853 - 1.27 deg.	Odd Gates Offset	-4.1663-1.4765i
Wind Gust	30.7 kts, 217 deg. N	Antenna Azm.	150.1 deg. N	Even Gates Offset	3.8311-3.6178i
8hr Avg. Wind	12.4 kts, 201.1 deg. N	Antenna Elv.	-1.156 deg.	I/Q Imbalance	Bypassed
Wave (SWH)	3.52 m, 145.9 deg. N	Antenna BW.	2 deg. Az, 2 deg. El	Complex Conj.	Applied
		GPS Data	Not applicable	Calibr. Coeff.	187.7 dB

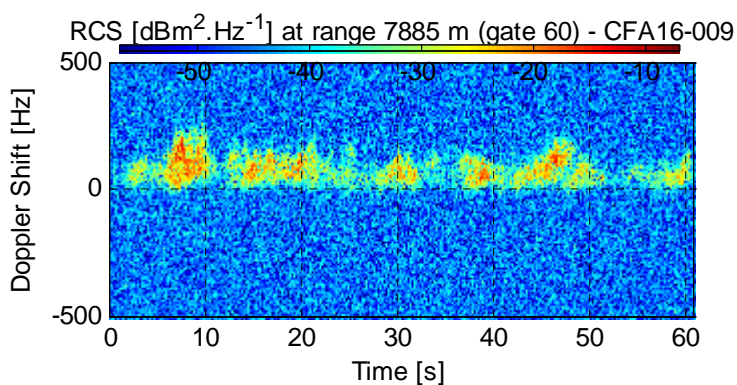
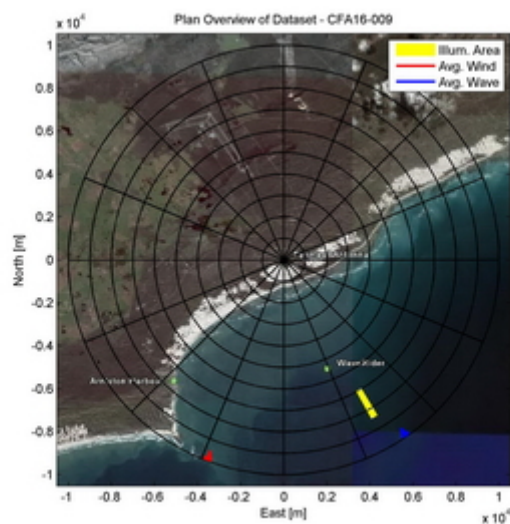


Dataset CFA16-009

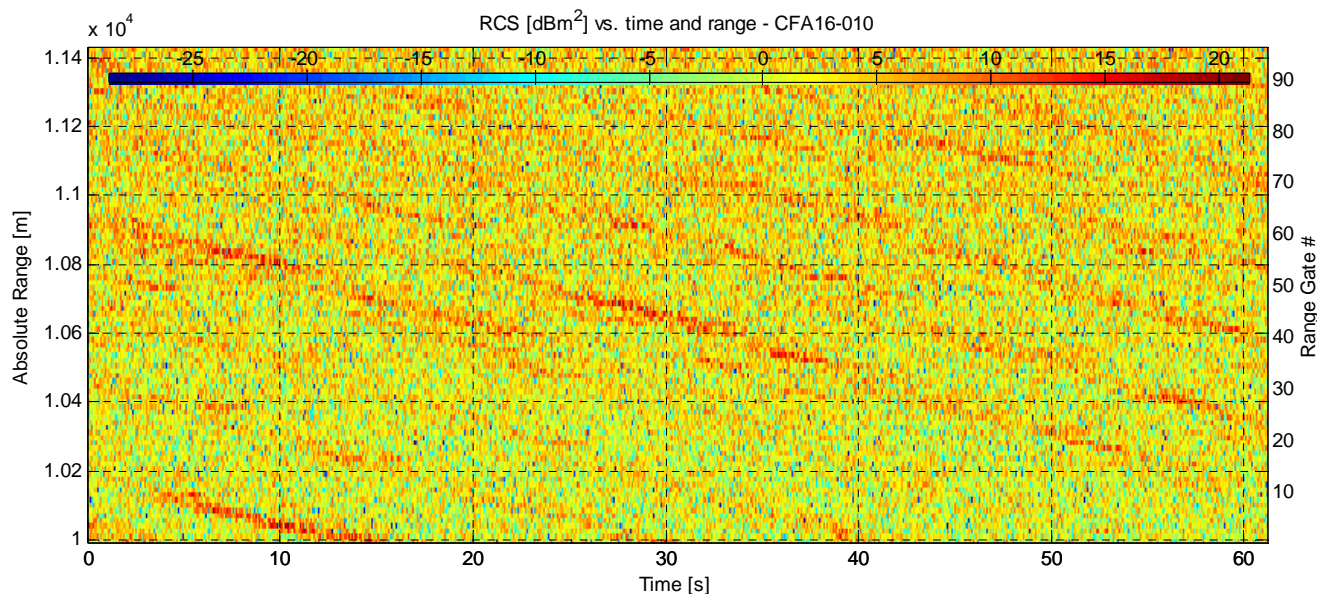


Experiment Summary	Value	Radar Setup	Value
Type	Sea Clutter	Tx Frequency	6.9 GHz
Date	02-Aug-2006	PRF	5 kHz
Start Time	11:27:46.125	Tracking Range	7000 m
Duration	305830 PRI's (61.1658 s)	Range Extend	1440 m (96 gates), 15 m res.
Original File	PF060802.051	Waveform Type	Fixed Frequency
Original Path	\20060802_ifs_contd_2	Waveform Bandwidth	N/A
Processor Version	FMSCP Ver 01.22	Waveform File	SC_Fixed_256BL.txt

Environment	Value	Geometry	Value	Processing	Value
Inst. Wind	17.4 kts, 200.9 deg. N	Grazing Angle	0.427 - 0.525 deg.	Odd Gates Offset	3.6462-3.4302i
Wind Gust	30.7 kts, 217 deg. N	Antenna Azm.	150.1 deg. N	Even Gates Offset	-4.4249-1.2988i
8hr Avg. Wind	12.4 kts, 201.1 deg. N	Antenna Elv.	-1.165 deg.	I/Q Imbalance	Bypassed
Wave (SWH)	3.52 m, 145.5 deg. N	Antenna BW.	2 deg. Az, 2 deg. El	Complex Conj.	Applied
		GPS Data	Not applicable	Calibr. Coeff.	187.7 dB

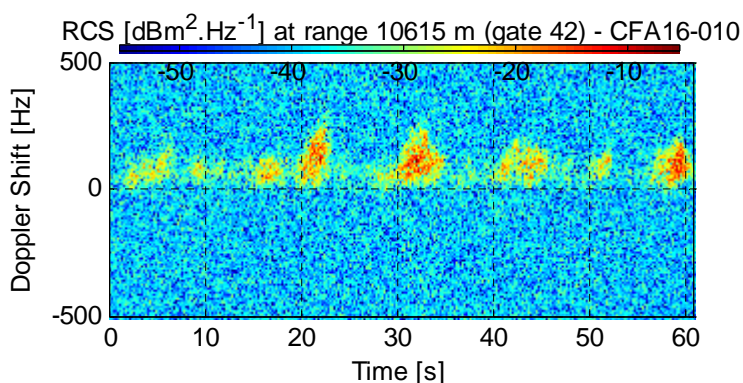
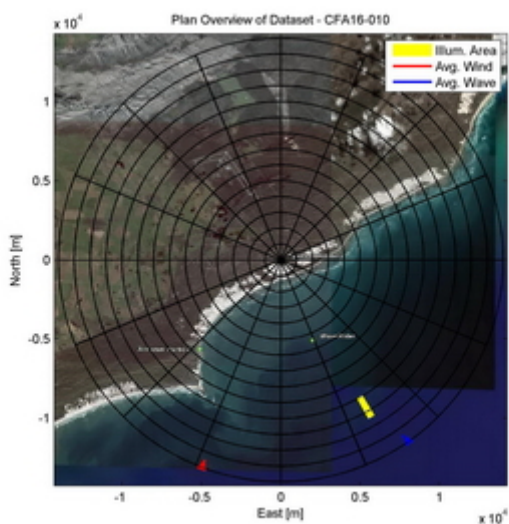


Dataset CFA16-010

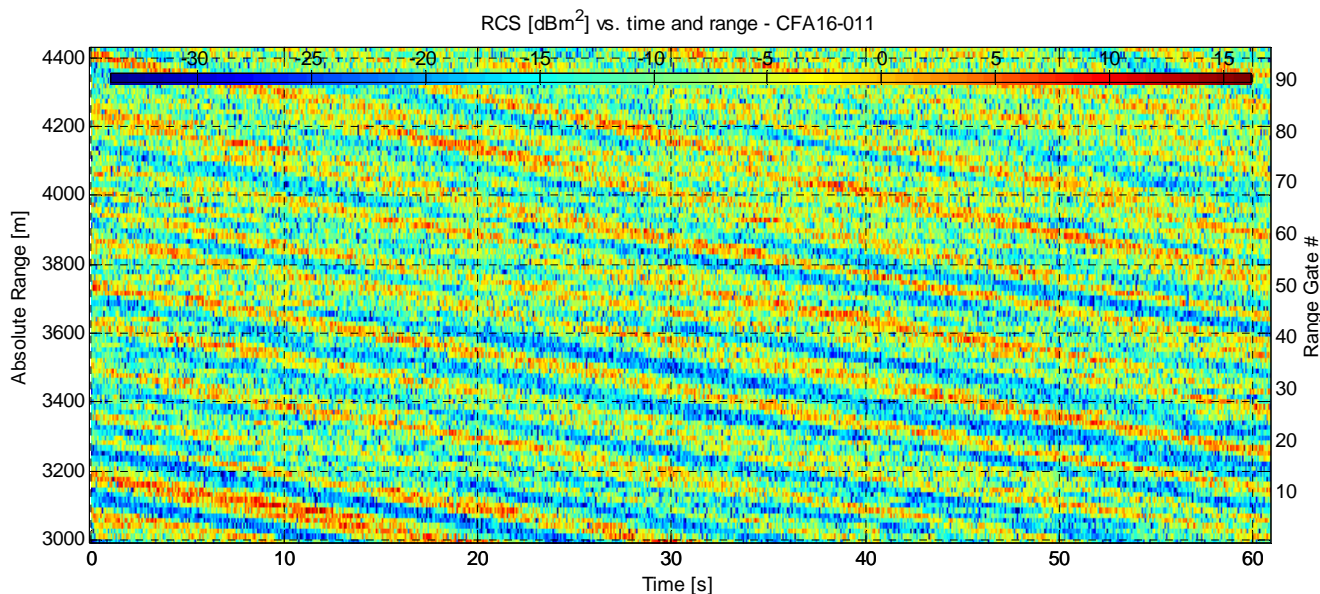


Experiment Summary	Value	Radar Setup	Value
Type	Sea Clutter	Tx Frequency	6.9 GHz
Date	02-Aug-2006	PRF	5 kHz
Start Time	11:29:09.140	Tracking Range	10000 m
Duration	305830 PRI's (61.1658 s)	Range Extend	1440 m (96 gates), 15 m res.
Original File	PF060802.052	Waveform Type	Fixed Frequency
Original Path	\20060802_ifs_contd_2	Waveform Bandwidth	N/A
Processor Version	FMSCP Ver 01.22	Waveform File	SC_Fixed_256BL.txt

Environment	Value	Geometry	Value	Processing	Value
Inst. Wind	17.5 kts, 200.8 deg. N	Grazing Angle	0.298 - 0.35 deg.	Odd Gates Offset	3.7562-3.7662i
Wind Gust	30.7 kts, 217 deg. N	Antenna Azm.	150.1 deg. N	Even Gates Offset	-4.4105-1.5595i
8hr Avg. Wind	12.4 kts, 201.1 deg. N	Antenna Elv.	-1.151 deg.	I/Q Imbalance	Bypassed
Wave (SWH)	3.52 m, 145.1 deg. N	Antenna BW.	2 deg. Az, 2 deg. El	Complex Conj.	Applied
		GPS Data	Not applicable	Calibr. Coeff.	187.7 dB

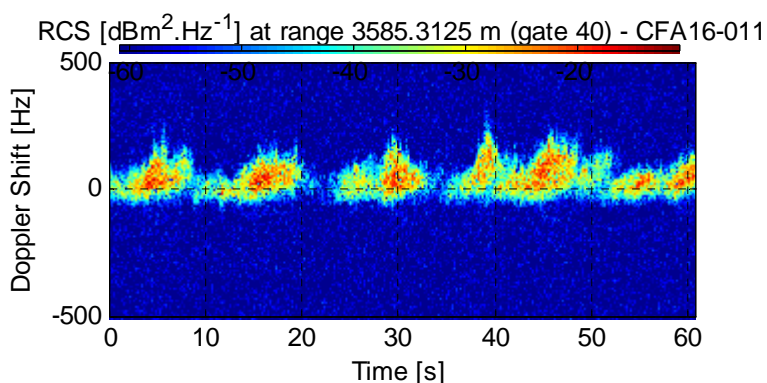
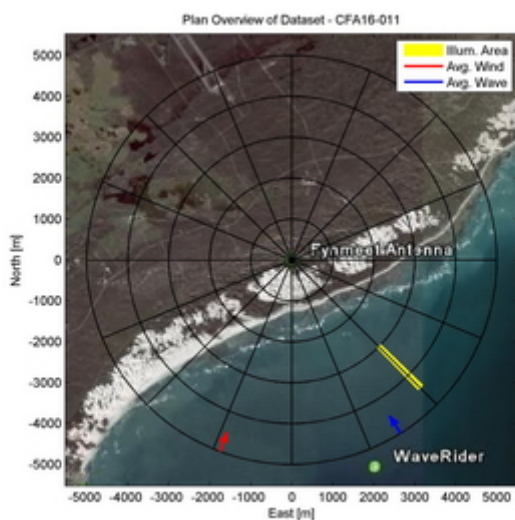


Dataset CFA16-011

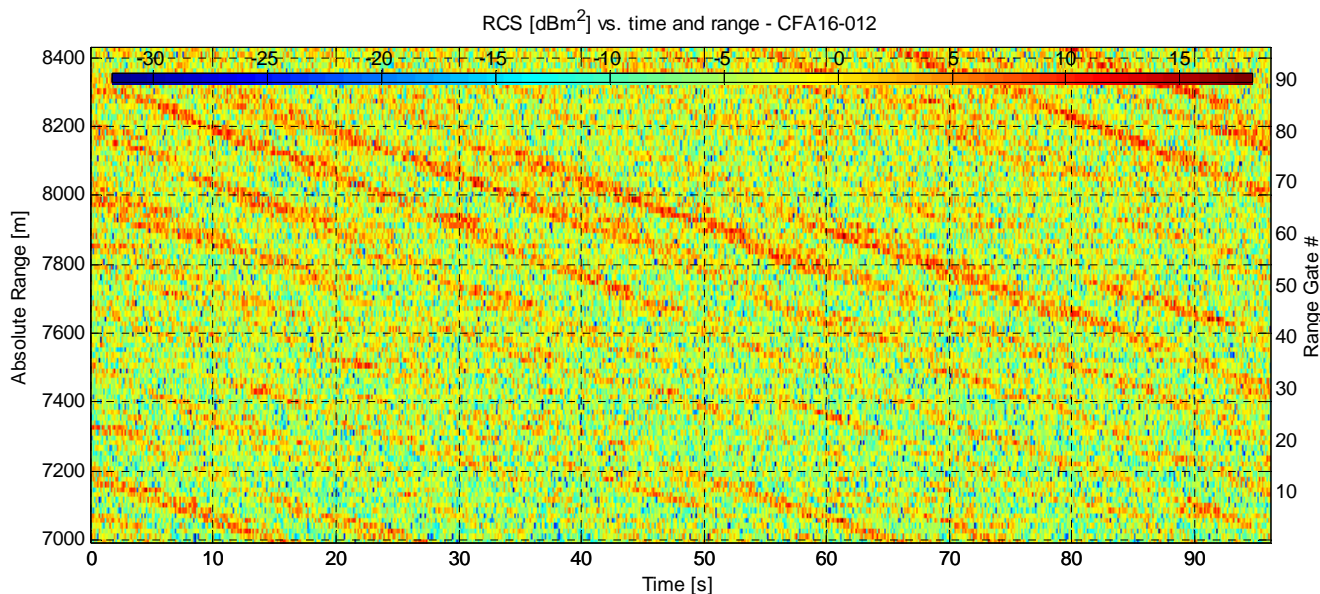


Experiment Summary	Value	Radar Setup	Value
Type	Sea Clutter	Tx Frequency	6.9 GHz
Date	02-Aug-2006	PRF	5 kHz
Start Time	11:36:25.531	Tracking Range	3000.31 m
Duration	304361 PRI's (60.872 s)	Range Extend	1440 m (96 gates), 15 m res.
Original File	PF060802.056	Waveform Type	Fixed Frequency
Original Path	\20060802_ifs_contd_2	Waveform Bandwidth	N/A
Processor Version	FMSCP Ver 01.22	Waveform File	SC_Fixed_256BL.txt

Environment	Value	Geometry	Value	Processing	Value
Inst. Wind	17.8 kts, 200.6 deg. N	Grazing Angle	0.853 - 1.27 deg.	Odd Gates Offset	-4.253-1.4456i
Wind Gust	30.7 kts, 217 deg. N	Antenna Azm.	134.8 deg. N	Even Gates Offset	3.6075-3.6245i
8hr Avg. Wind	12.5 kts, 201 deg. N	Antenna Elv.	-1.181 deg.	I/Q Imbalance	Bypassed
Wave (SWH)	3.51 m, 147.2 deg. N	Antenna BW.	2 deg. Az, 2 deg. El	Complex Conj.	Applied
		GPS Data	Not applicable	Calibr. Coeff.	187.7 dB

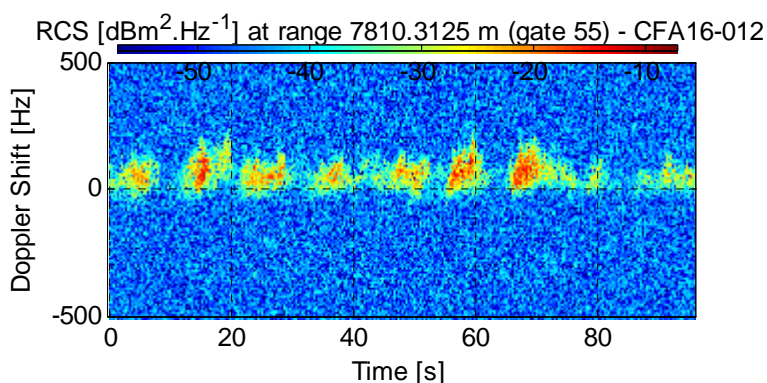
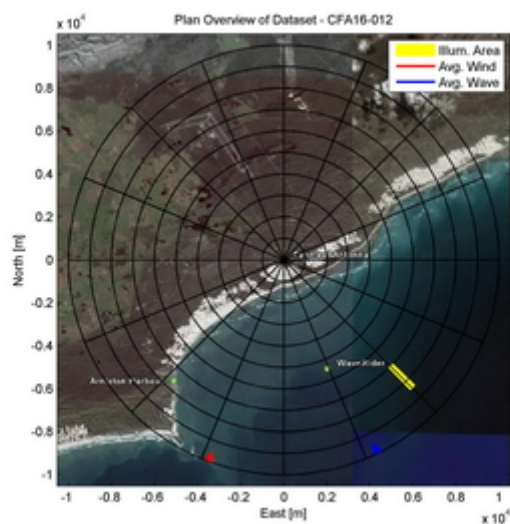


Dataset CFA16-012

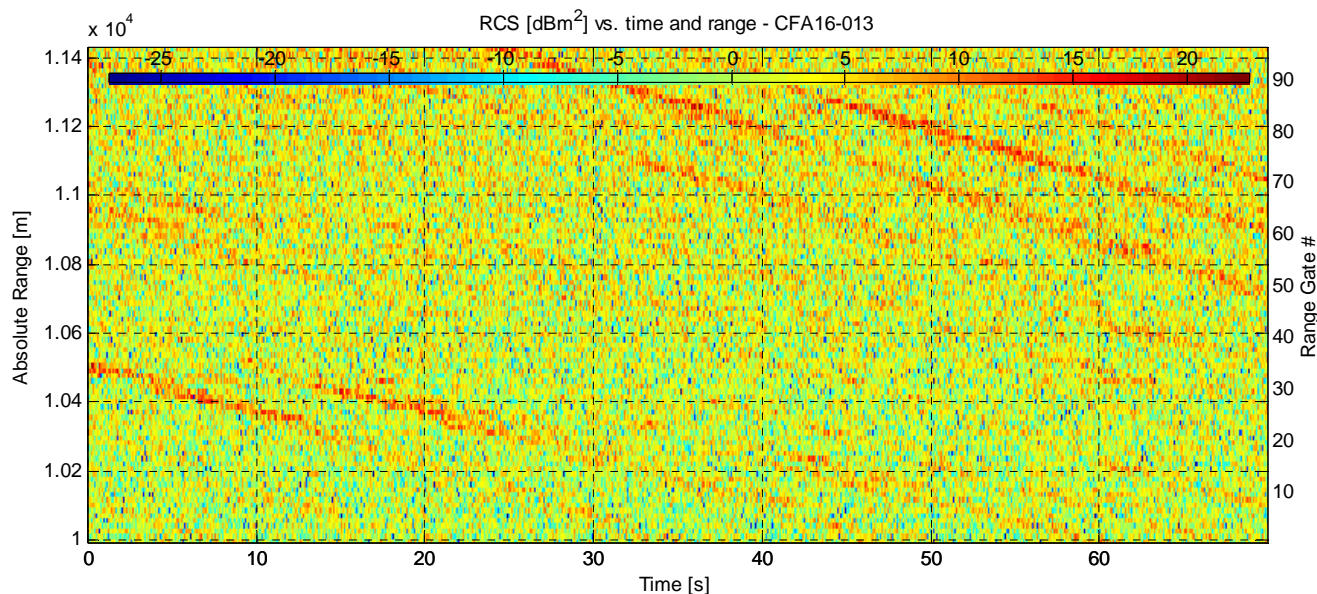


Experiment Summary	Value	Radar Setup	Value
Type	Sea Clutter	Tx Frequency	6.9 GHz
Date	02-Aug-2006	PRF	5 kHz
Start Time	11:42:59.625	Tracking Range	7000.31 m
Duration	480590 PRI's (96.1178 s)	Range Extend	1440 m (96 gates), 15 m res.
Original File	PF060802.059	Waveform Type	Fixed Frequency
Original Path	\\20060802_ifs_contd_2	Waveform Bandwidth	N/A
Processor Version	FMSCP Ver 01.22	Waveform File	SC_Fixed_256BL.txt

Environment	Value	Geometry	Value	Processing	Value
Inst. Wind	17.9 kts, 200.4 deg. N	Grazing Angle	0.427 - 0.525 deg.	Odd Gates Offset	3.7913-0.64987i
Wind Gust	30.7 kts, 217 deg. N	Antenna Azm.	134.7 deg. N	Even Gates Offset	9.42082-5.72067i
8hr Avg. Wind	12.6 kts, 201 deg. N	Antenna Elv.	-1.178 deg.	I/Q Imbalance	Bypassed
Wave (SWH)	3.47 m, 152.4 deg. N	Antenna BW.	2 deg. Az, 2 deg. El	Complex Conj.	Applied
		GPS Data	Not applicable	Calibr. Coeff.	187.7 dB

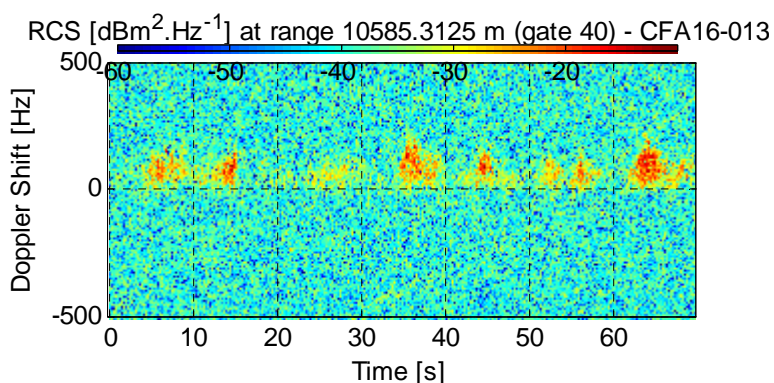
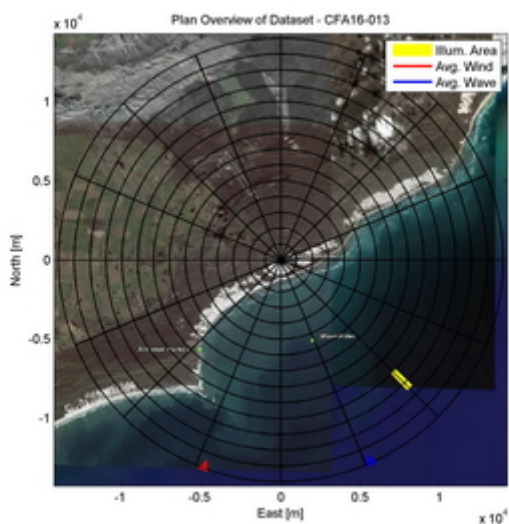


Dataset CFA16-013

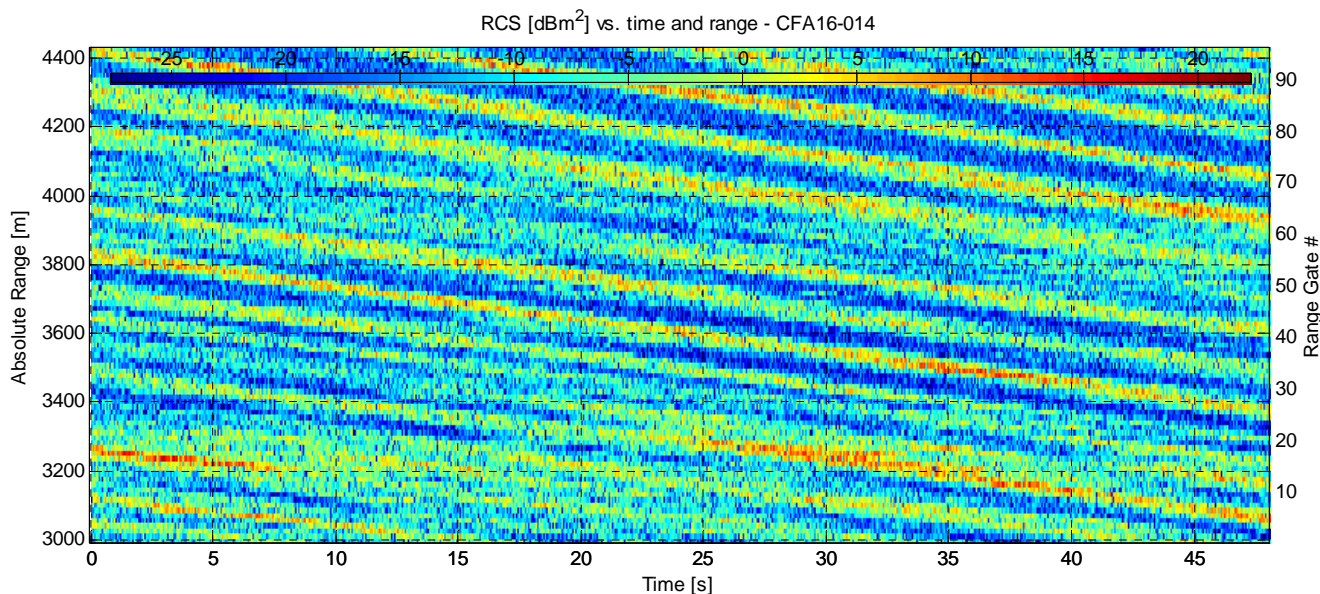


Experiment Summary	Value	Radar Setup	Value
Type	Sea Clutter	Tx Frequency	6.9 GHz
Date	02-Aug-2006	PRF	5 kHz
Start Time	11:44:59.937	Tracking Range	10000.3 m
Duration	349520 PRI's (69.9038 s)	Range Extend	1440 m (96 gates), 15 m res.
Original File	PF060802.060	Waveform Type	Fixed Frequency
Original Path	\20060802_ifs_contd_3	Waveform Bandwidth	N/A
Processor Version	FMSCP Ver 01.22	Waveform File	SC_Fixed_256BL.txt

Environment	Value	Geometry	Value	Processing	Value
Inst. Wind	18 kts, 200.4 deg. N	Grazing Angle	0.298 - 0.35 deg.	Odd Gates Offset	3.8654-0.26746i
Wind Gust	30.7 kts, 217 deg. N	Antenna Azm.	134.8 deg. N	Even Gates Offset	9.79525-5.48931i
8hr Avg. Wind	12.6 kts, 201 deg. N	Antenna Elv.	-1.17 deg.	I/Q Imbalance	Bypassed
Wave (SWH)	3.46 m, 154.5 deg. N	Antenna BW.	2 deg. Az, 2 deg. El	Complex Conj.	Applied
		GPS Data	Not applicable	Calibr. Coeff.	187.7 dB

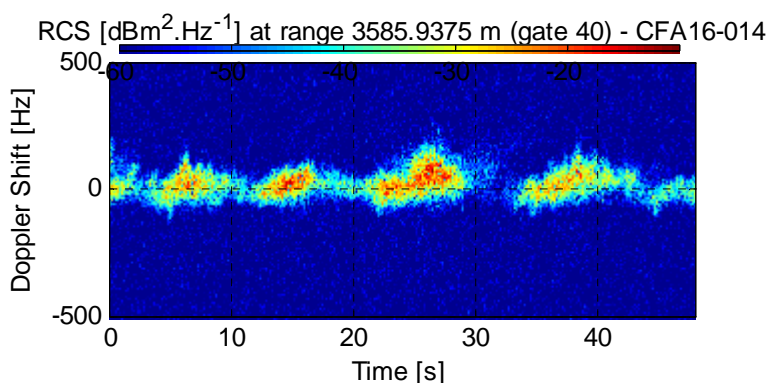
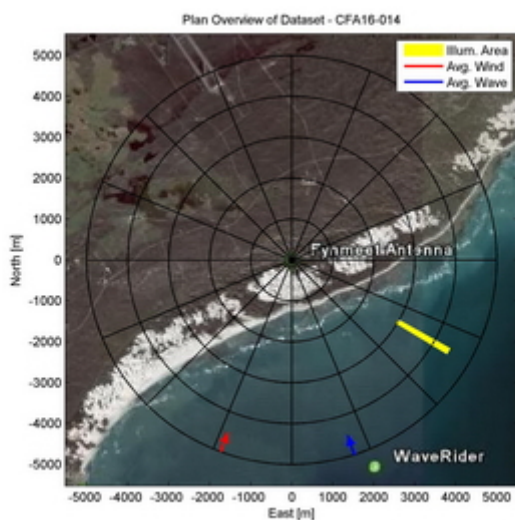


Dataset CFA16-014

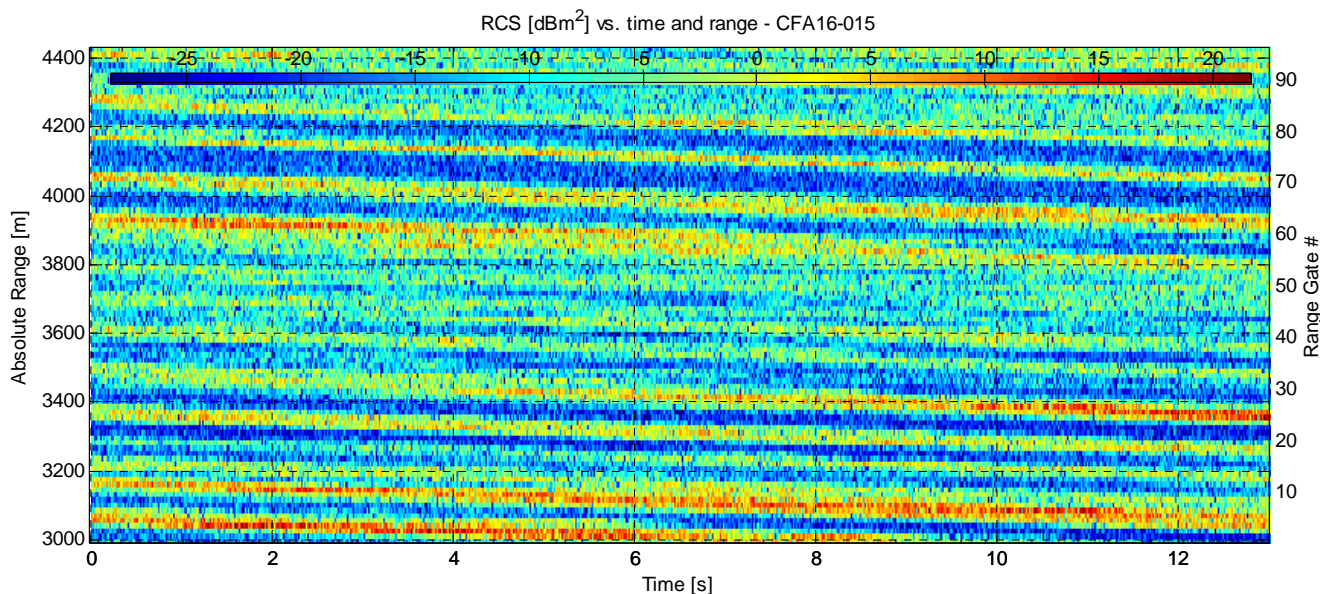


Experiment Summary	Value	Radar Setup	Value
Type	Sea Clutter	Tx Frequency	6.9 GHz
Date	02-Aug-2006	PRF	5 kHz
Start Time	11:51:36.968	Tracking Range	3000.94 m
Duration	240400 PRI's (48.0798 s)	Range Extend	1440 m (96 gates), 15 m res.
Original File	PF060802.064	Waveform Type	Fixed Frequency
Original Path	\\20060802_ifs_contd_3	Waveform Bandwidth	N/A
Processor Version	FMSCP Ver 01.22	Waveform File	SC_Fixed_256BL.txt

Environment	Value	Geometry	Value	Processing	Value
Inst. Wind	18.1 kts, 200.3 deg. N	Grazing Angle	0.853 - 1.27 deg.	Odd Gates Offset	9.27927-5.50133i
Wind Gust	30.7 kts, 217 deg. N	Antenna Azm.	120.3 deg. N	Even Gates Offset	3.86-0.23607i
8hr Avg. Wind	12.7 kts, 200.9 deg. N	Antenna Elv.	-1.225 deg.	I/Q Imbalance	Bypassed
Wave (SWH)	3.41 m, 161.5 deg. N	Antenna BW.	2 deg. Az, 2 deg. El	Complex Conj.	Applied
		GPS Data	Not applicable	Calibr. Coeff.	187.7 dB

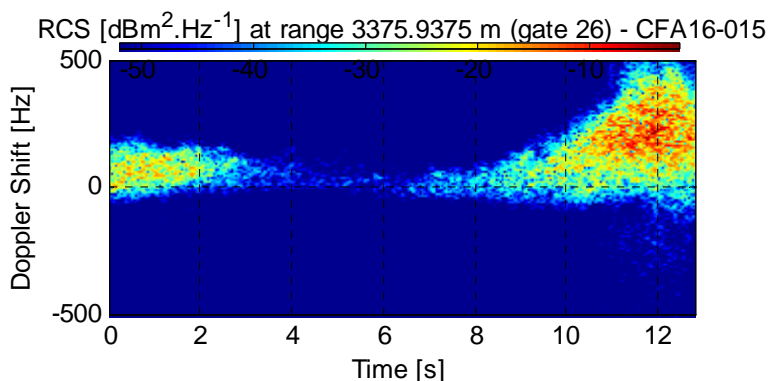
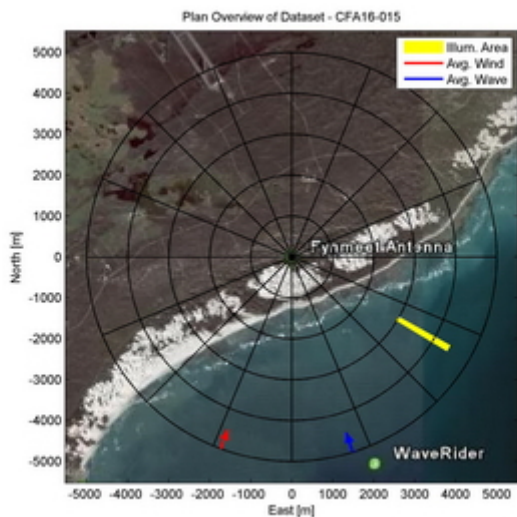


Dataset CFA16-015

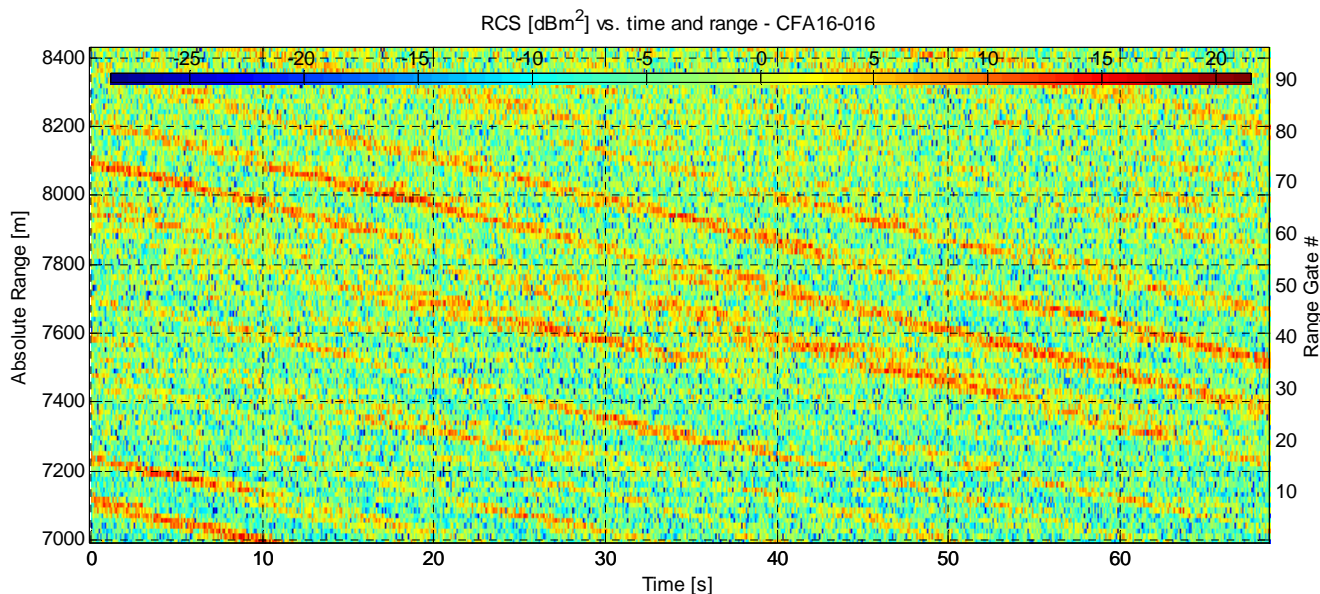


Experiment Summary	Value	Radar Setup	Value
Type	Sea Clutter	Tx Frequency	6.9 GHz
Date	02-Aug-2006	PRF	5 kHz
Start Time	11:52:25.056	Tracking Range	3000.94 m
Duration	65036 PRI's (13.007 s)	Range Extend	1440 m (96 gates), 15 m res.
Original File	PF060802.064	Waveform Type	Fixed Frequency
Original Path	\20060802_ifs_contd_3	Waveform Bandwidth	N/A
Processor Version	FMSCP Ver 01.22	Waveform File	SC_Fixed_256BL.txt

Environment	Value	Geometry	Value	Processing	Value
Inst. Wind	18.1 kts, 200.3 deg. N	Grazing Angle	0.853 - 1.27 deg.	Odd Gates Offset	9.62357-5.41289i
Wind Gust	30.7 kts, 217 deg. N	Antenna Azm.	120.3 deg. N	Even Gates Offset	3.8465-0.17066i
8hr Avg. Wind	12.7 kts, 200.9 deg. N	Antenna Elv.	-1.225 deg.	I/Q Imbalance	Bypassed
Wave (SWH)	3.4 m, 162.3 deg. N	Antenna BW.	2 deg. Az, 2 deg. El	Complex Conj.	Applied
		GPS Data	Not applicable	Calibr. Coeff.	187.7 dB

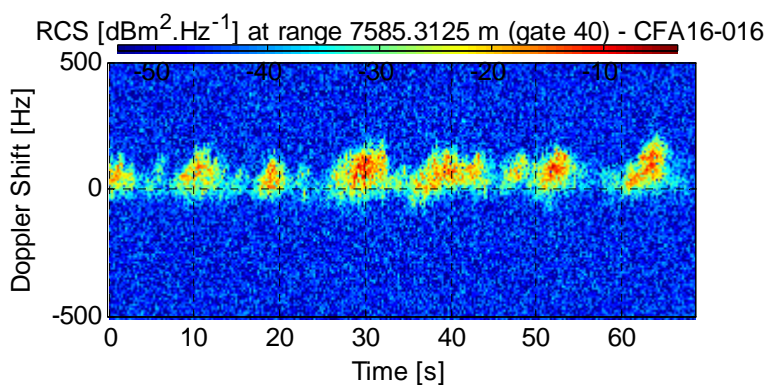
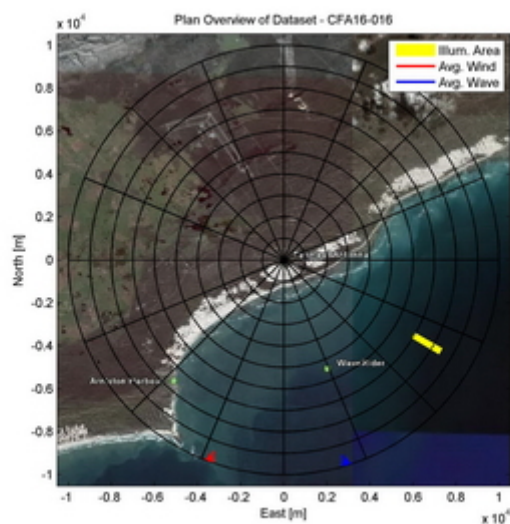


Dataset CFA16-016

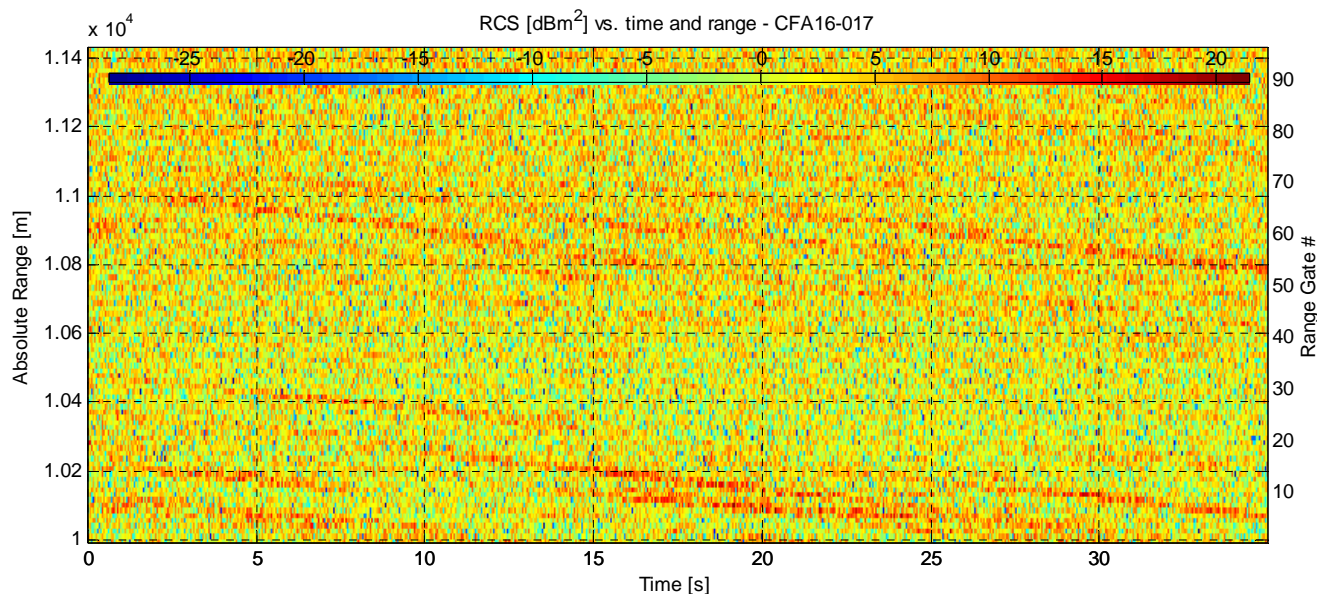


Experiment Summary	Value	Radar Setup	Value
Type	Sea Clutter	Tx Frequency	6.9 GHz
Date	02-Aug-2006	PRF	5 kHz
Start Time	11:52:49.703	Tracking Range	7000.31 m
Duration	343519 PRI's (68.7036 s)	Range Extend	1440 m (96 gates), 15 m res.
Original File	PF060802.065	Waveform Type	Fixed Frequency
Original Path	\20060802_ifs_contd_3	Waveform Bandwidth	N/A
Processor Version	FMSCP Ver 01.22	Waveform File	SC_Fixed_256BL.txt

Environment	Value	Geometry	Value	Processing	Value
Inst. Wind	18.1 kts, 200.3 deg. N	Grazing Angle	0.427 - 0.525 deg.	Odd Gates Offset	3.875+0.012365i
Wind Gust	30.7 kts, 217 deg. N	Antenna Azm.	120.3 deg. N	Even Gates Offset	9.81433-5.34195i
8hr Avg. Wind	12.7 kts, 200.9 deg. N	Antenna Elv.	-1.219 deg.	I/Q Imbalance	Bypassed
Wave (SWH)	3.4 m, 162.3 deg. N	Antenna BW.	2 deg. Az, 2 deg. El	Complex Conj.	Applied
		GPS Data	Not applicable	Calibr. Coeff.	187.7 dB

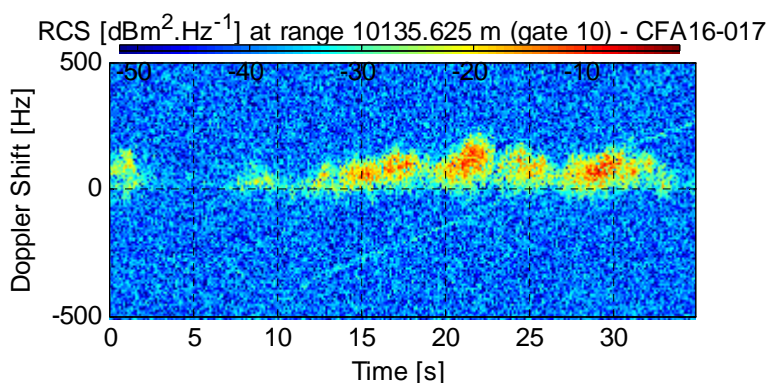
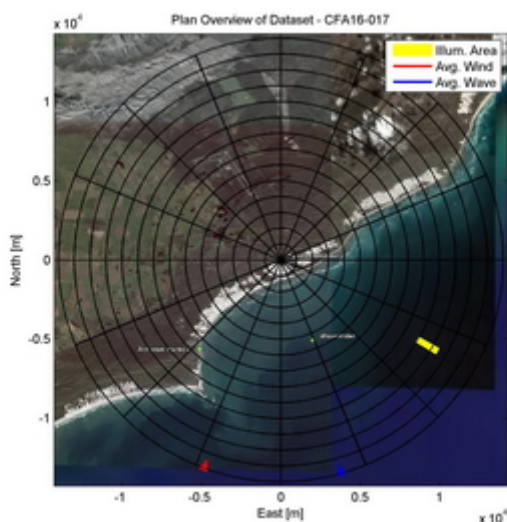


Dataset CFA16-017

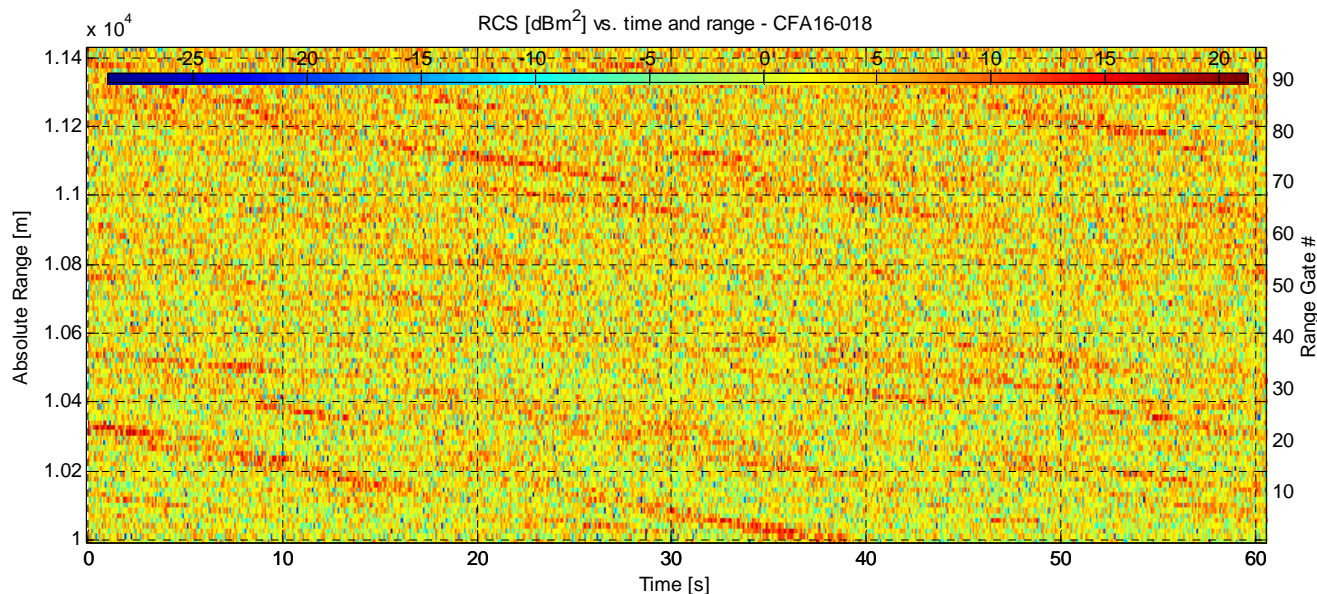


Experiment Summary	Value	Radar Setup	Value
Type	Sea Clutter	Tx Frequency	6.9 GHz
Date	02-Aug-2006	PRF	5 kHz
Start Time	11:54:13.484	Tracking Range	10000.6 m
Duration	174760 PRI's (34.9518 s)	Range Extend	1440 m (96 gates), 15 m res.
Original File	PF060802.066	Waveform Type	Fixed Frequency
Original Path	\20060802_ifs_contd_3	Waveform Bandwidth	N/A
Processor Version	FMSCP Ver 01.22	Waveform File	SC_Fixed_256BL.txt

Environment	Value	Geometry	Value	Processing	Value
Inst. Wind	18.1 kts, 200.2 deg. N	Grazing Angle	0.298 - 0.35 deg.	Odd Gates Offset	3.6466-0.18723i
Wind Gust	30.7 kts, 217 deg. N	Antenna Azm.	120.3 deg. N	Even Gates Offset	9.69677-5.53721i
8hr Avg. Wind	12.7 kts, 200.9 deg. N	Antenna Elv.	-1.219 deg.	I/Q Imbalance	Bypassed
Wave (SWH)	3.39 m, 163.8 deg. N	Antenna BW.	2 deg. Az, 2 deg. El	Complex Conj.	Applied
		GPS Data	Not applicable	Calibr. Coeff.	187.7 dB

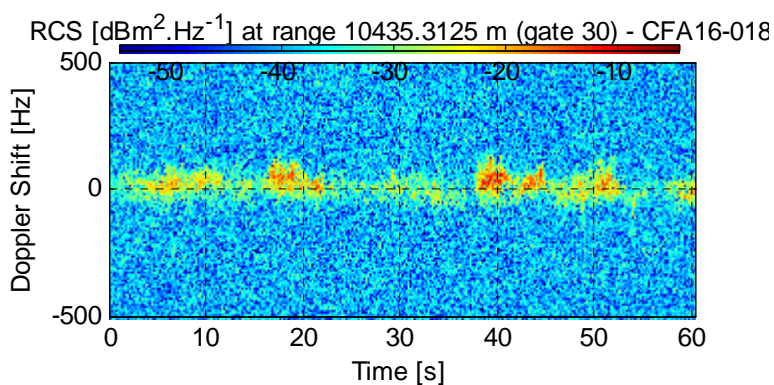
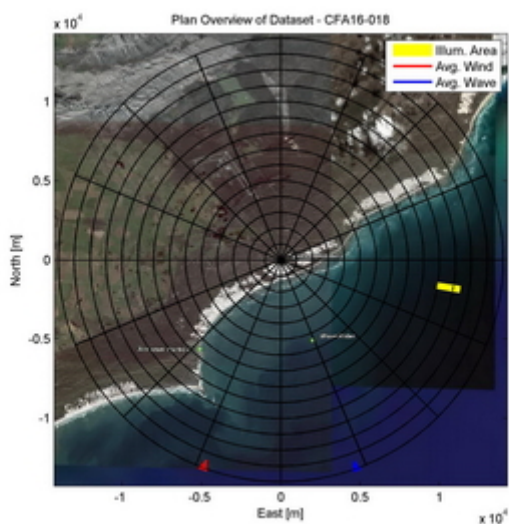


Dataset CFA16-018

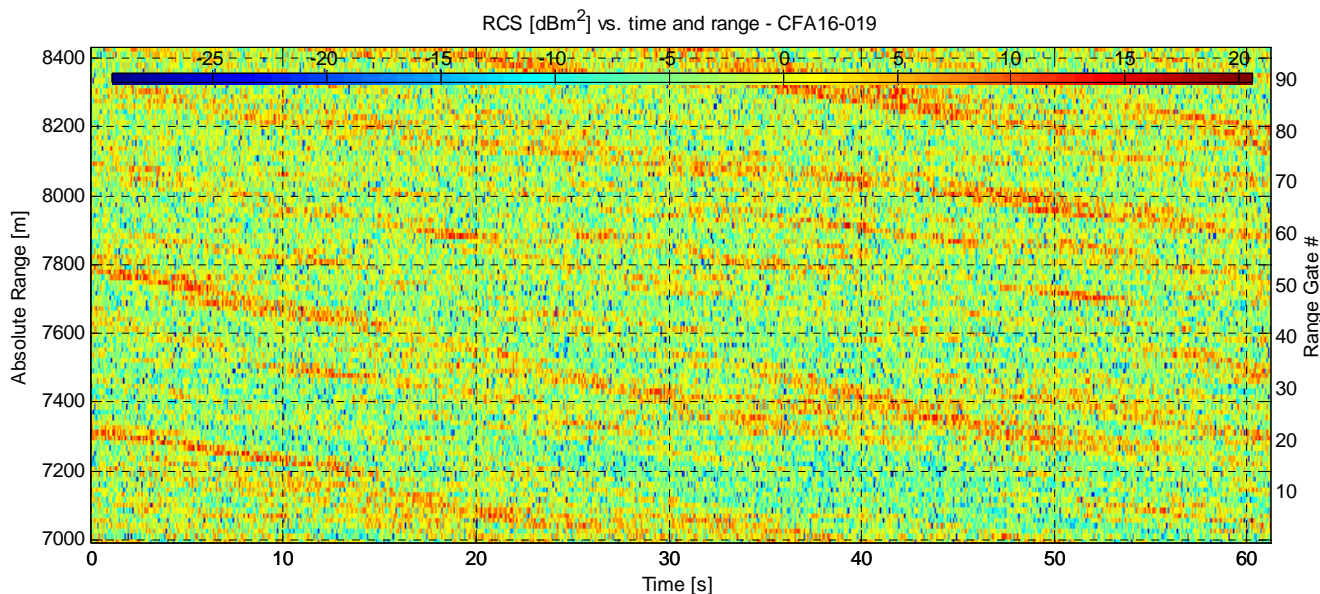


Experiment Summary	Value	Radar Setup	Value
Type	Sea Clutter	Tx Frequency	6.9 GHz
Date	02-Aug-2006	PRF	5 kHz
Start Time	12:17:42.218	Tracking Range	10000.3 m
Duration	302799 PRI's (60.5596 s)	Range Extend	1440 m (96 gates), 15 m res.
Original File	PF060802.073	Waveform Type	Fixed Frequency
Original Path	\20060802_ifs_contd_3	Waveform Bandwidth	N/A
Processor Version	FMSCP Ver 01.22	Waveform File	SC_Fixed_256BL.txt

Environment	Value	Geometry	Value	Processing	Value
Inst. Wind	17.8 kts, 200.4 deg. N	Grazing Angle	0.298 - 0.35 deg.	Odd Gates Offset	9.35303-5.35691i
Wind Gust	33 kts, 180 deg. N	Antenna Azm.	99.34 deg. N	Even Gates Offset	3.4457-0.043373i
8hr Avg. Wind	13 kts, 200.8 deg. N	Antenna Elv.	-1.247 deg.	I/Q Imbalance	Bypassed
Wave (SWH)	3.42 m, 160.6 deg. N	Antenna BW.	2 deg. Az, 2 deg. El	Complex Conj.	Applied
		GPS Data	Not applicable	Calibr. Coeff.	187.7 dB

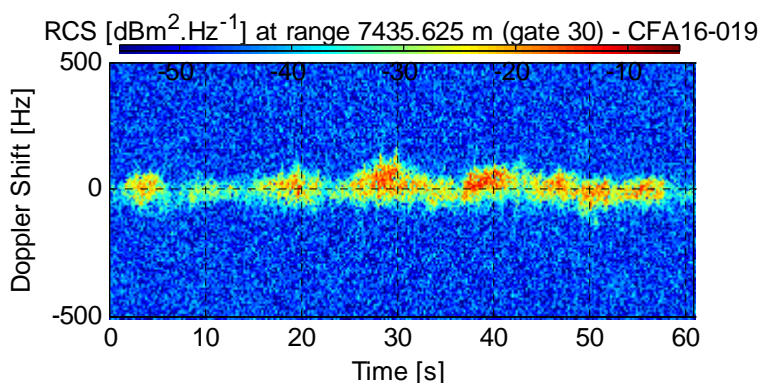
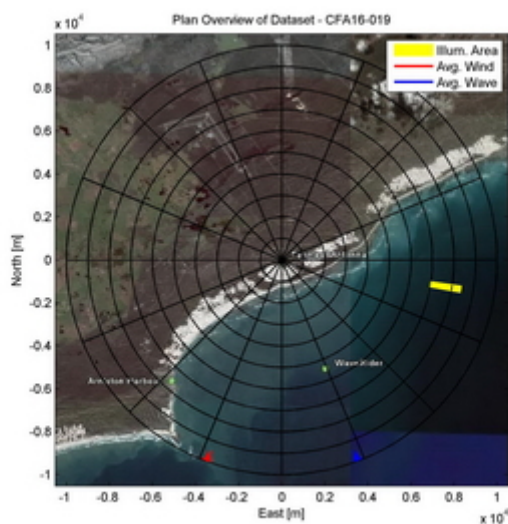


Dataset CFA16-019

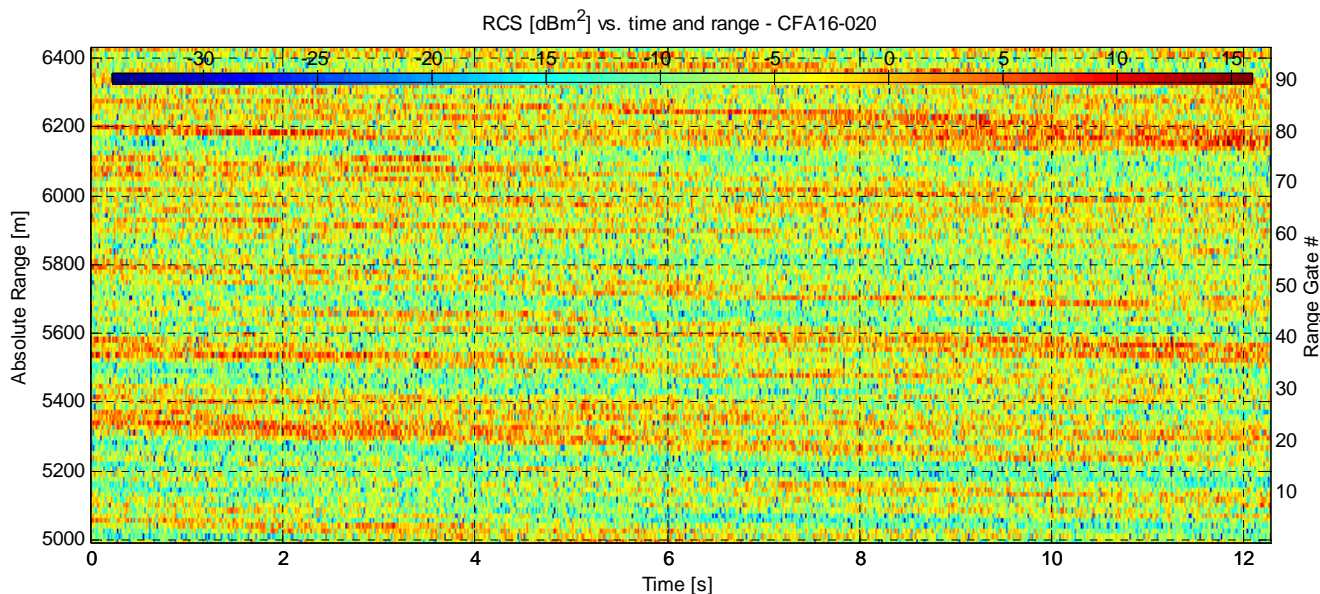


Experiment Summary	Value	Radar Setup	Value
Type	Sea Clutter	Tx Frequency	6.9 GHz
Date	02-Aug-2006	PRF	5 kHz
Start Time	12:19:03.921	Tracking Range	7000.63 m
Duration	305830 PRI's (61.1658 s)	Range Extend	1440 m (96 gates), 15 m res.
Original File	PF060802.074	Waveform Type	Fixed Frequency
Original Path	\20060802_ifs_contd_3	Waveform Bandwidth	N/A
Processor Version	FMSCP Ver 01.22	Waveform File	SC_Fixed_256BL.txt

Environment	Value	Geometry	Value	Processing	Value
Inst. Wind	17.8 kts, 200.4 deg. N	Grazing Angle	0.427 - 0.525 deg.	Odd Gates Offset	9.36109-5.40715i
Wind Gust	33 kts, 180 deg. N	Antenna Azm.	99.33 deg. N	Even Gates Offset	3.5531+0.014137i
8hr Avg. Wind	13 kts, 200.8 deg. N	Antenna Elv.	-1.255 deg.	I/Q Imbalance	Bypassed
Wave (SWH)	3.42 m, 159.7 deg. N	Antenna BW.	2 deg. Az, 2 deg. El	Complex Conj.	Applied
		GPS Data	Not applicable	Calibr. Coeff.	187.7 dB

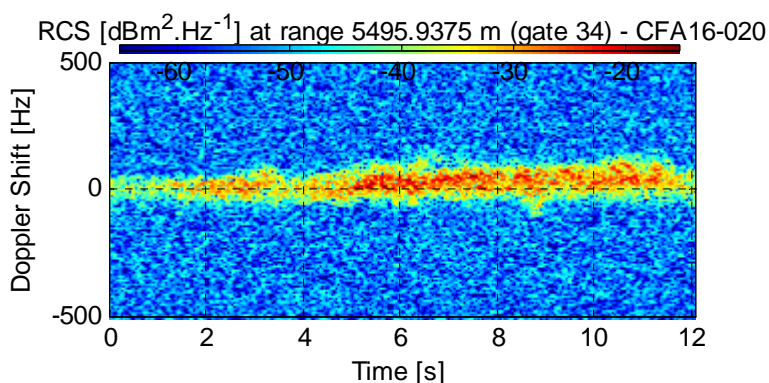
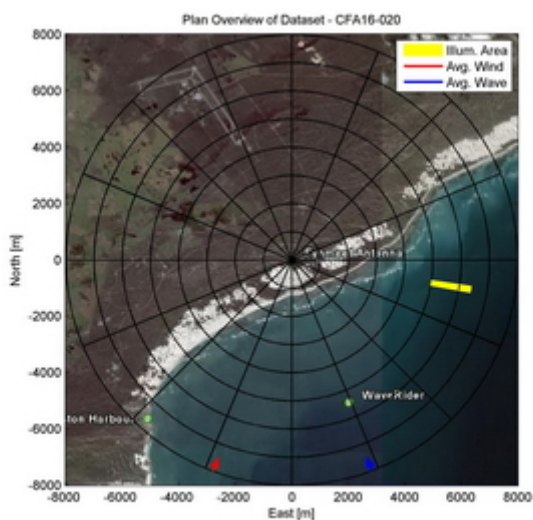


Dataset CFA16-020

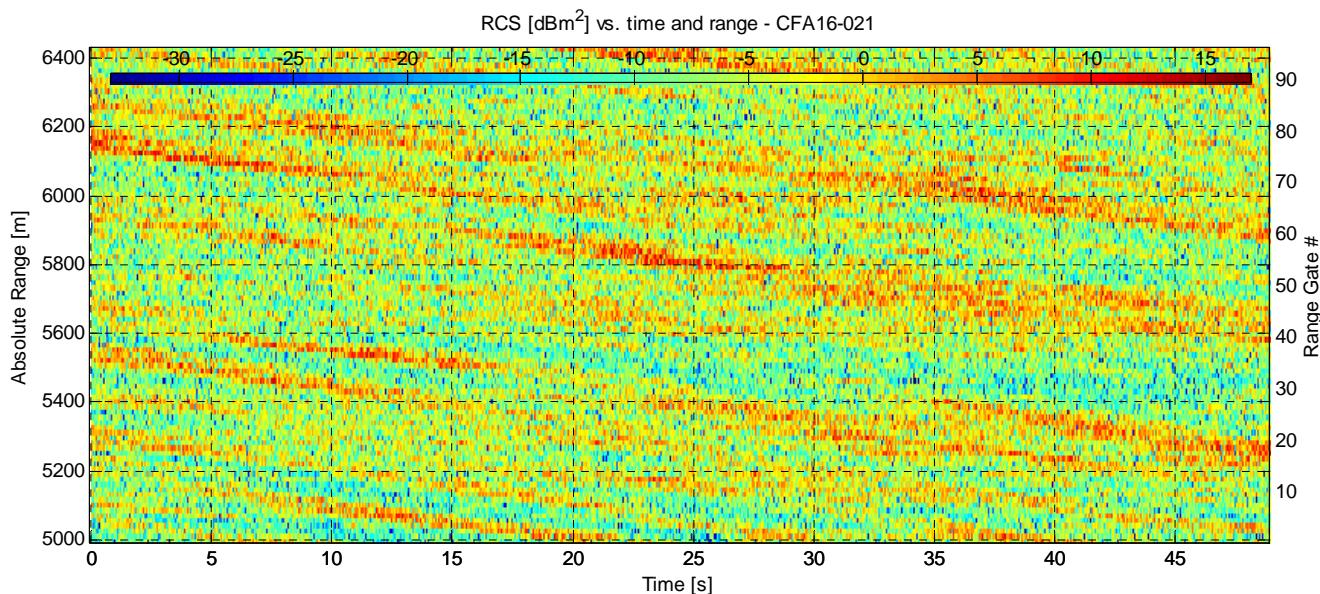


Experiment Summary	Value	Radar Setup	Value
Type	Sea Clutter	Tx Frequency	6.9 GHz
Date	02-Aug-2006	PRF	5 kHz
Start Time	12:20:29.781	Tracking Range	5000.94 m
Duration	61320 PRI's (12.2638 s)	Range Extend	1440 m (96 gates), 15 m res.
Original File	PF060802.075	Waveform Type	Fixed Frequency
Original Path	\20060802_ifs_contd_4	Waveform Bandwidth	N/A
Processor Version	FMSCP Ver 01.22	Waveform File	SC_Fixed_256BL.txt

Environment	Value	Geometry	Value	Processing	Value
Inst. Wind	17.8 kts, 200.4 deg. N	Grazing Angle	0.576 - 0.751 deg.	Odd Gates Offset	3.4827-0.40206i
Wind Gust	33 kts, 180 deg. N	Antenna Azm.	99.34 deg. N	Even Gates Offset	9.01951-5.13956i
8hr Avg. Wind	13 kts, 200.8 deg. N	Antenna Elv.	-1.255 deg.	I/Q Imbalance	Bypassed
Wave (SWH)	3.42 m, 159.3 deg. N	Antenna BW.	2 deg. Az, 2 deg. El	Complex Conj.	Applied
		GPS Data	Not applicable	Calibr. Coeff.	187.7 dB

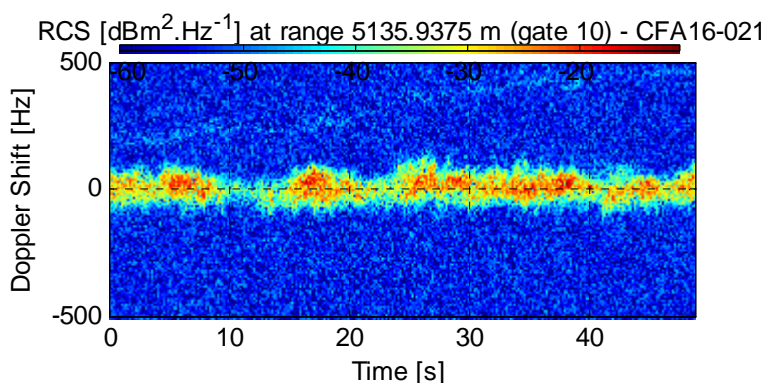
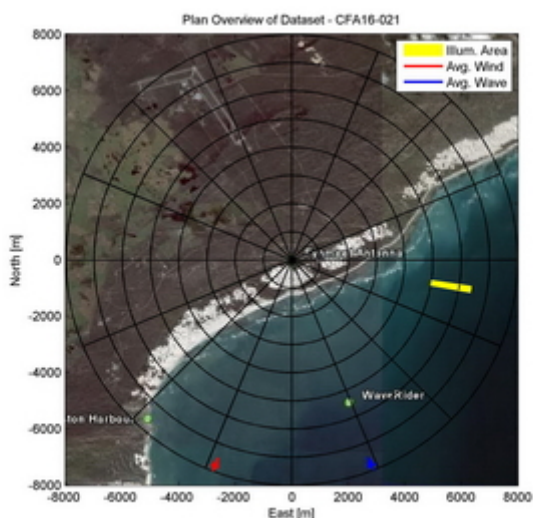


Dataset CFA16-021

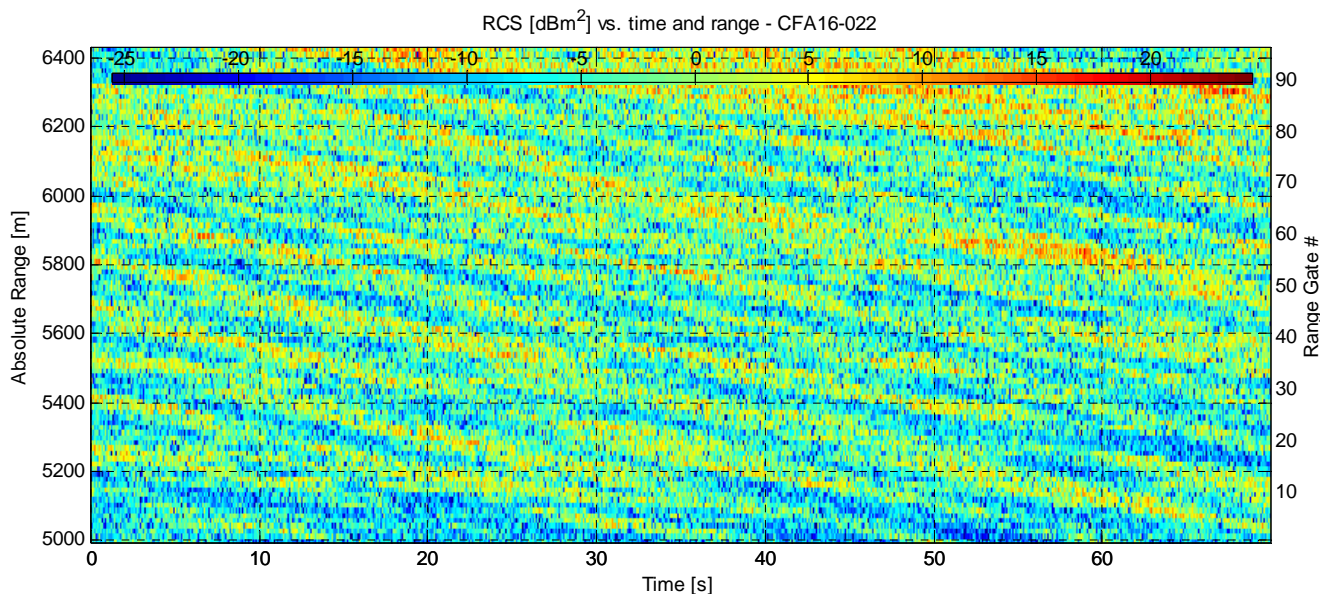


Experiment Summary	Value	Radar Setup	Value
Type	Sea Clutter	Tx Frequency	6.9 GHz
Date	02-Aug-2006	PRF	5 kHz
Start Time	12:20:42.053	Tracking Range	5000.94 m
Duration	244470 PRI's (48.8938 s)	Range Extend	1440 m (96 gates), 15 m res.
Original File	PF060802.075	Waveform Type	Fixed Frequency
Original Path	\\20060802_ifs_contd_4	Waveform Bandwidth	N/A
Processor Version	FMSCP Ver 01.22	Waveform File	SC_Fixed_256BL.txt

Environment	Value	Geometry	Value	Processing	Value
Inst. Wind	17.8 kts, 200.4 deg. N	Grazing Angle	0.576 - 0.751 deg.	Odd Gates Offset	3.5464-0.31803i
Wind Gust	33 kts, 180 deg. N	Antenna Azm.	99.34 deg. N	Even Gates Offset	9.00245-5.22459i
8hr Avg. Wind	13 kts, 200.8 deg. N	Antenna Elv.	-1.255 deg.	I/Q Imbalance	Bypassed
Wave (SWH)	3.42 m, 159.3 deg. N	Antenna BW.	2 deg. Az, 2 deg. El	Complex Conj.	Applied
		GPS Data	Not applicable	Calibr. Coeff.	187.7 dB



Dataset CFA16-022



Experiment Summary	Value	Radar Setup	Value
Type	Sea Clutter	Tx Frequency	6.9 GHz
Date	02-Aug-2006	PRF	5 kHz
Start Time	12:26:07.859	Tracking Range	5001.56 m
Duration	349520 PRI's (69.9038 s)	Range Extend	1440 m (96 gates), 15 m res.
Original File	PF060802.076	Waveform Type	Fixed Frequency
Original Path	\20060802_ifs_contd_4	Waveform Bandwidth	N/A
Processor Version	FMSCP Ver 01.22	Waveform File	SC_Fixed_256BL.txt

Environment	Value	Geometry	Value	Processing	Value
Inst. Wind	17.6 kts, 200.5 deg. N	Grazing Angle	0.576 - 0.751 deg.	Odd Gates Offset	3.3823-0.42263i
Wind Gust	33 kts, 180 deg. N	Antenna Azm.	94.13 deg. N	Even Gates Offset	8.91168-5.04607i
8hr Avg. Wind	13.1 kts, 200.8 deg. N	Antenna Elv.	-0.5466 deg.	I/Q Imbalance	Bypassed
Wave (SWH)	3.44 m, 157.4 deg. N	Antenna BW.	2 deg. Az, 2 deg. El	Complex Conj.	Applied
		GPS Data	Not applicable	Calibr. Coeff.	187.7 dB

