

Ingcazelo yendawo ethambili njalo umhlabathi onamanzi ixhaphozi – indawo ehlezi imanzi esikhathini esiningi sonyaka.

Yindawo lapho amanzi ngaphansi komhlaba aseduze lomhlabathi. Yindawo lapho amanzi amakhona kubezifula njalo kulomhlaba kulungele izitshalo (National Water Act 1998:9).

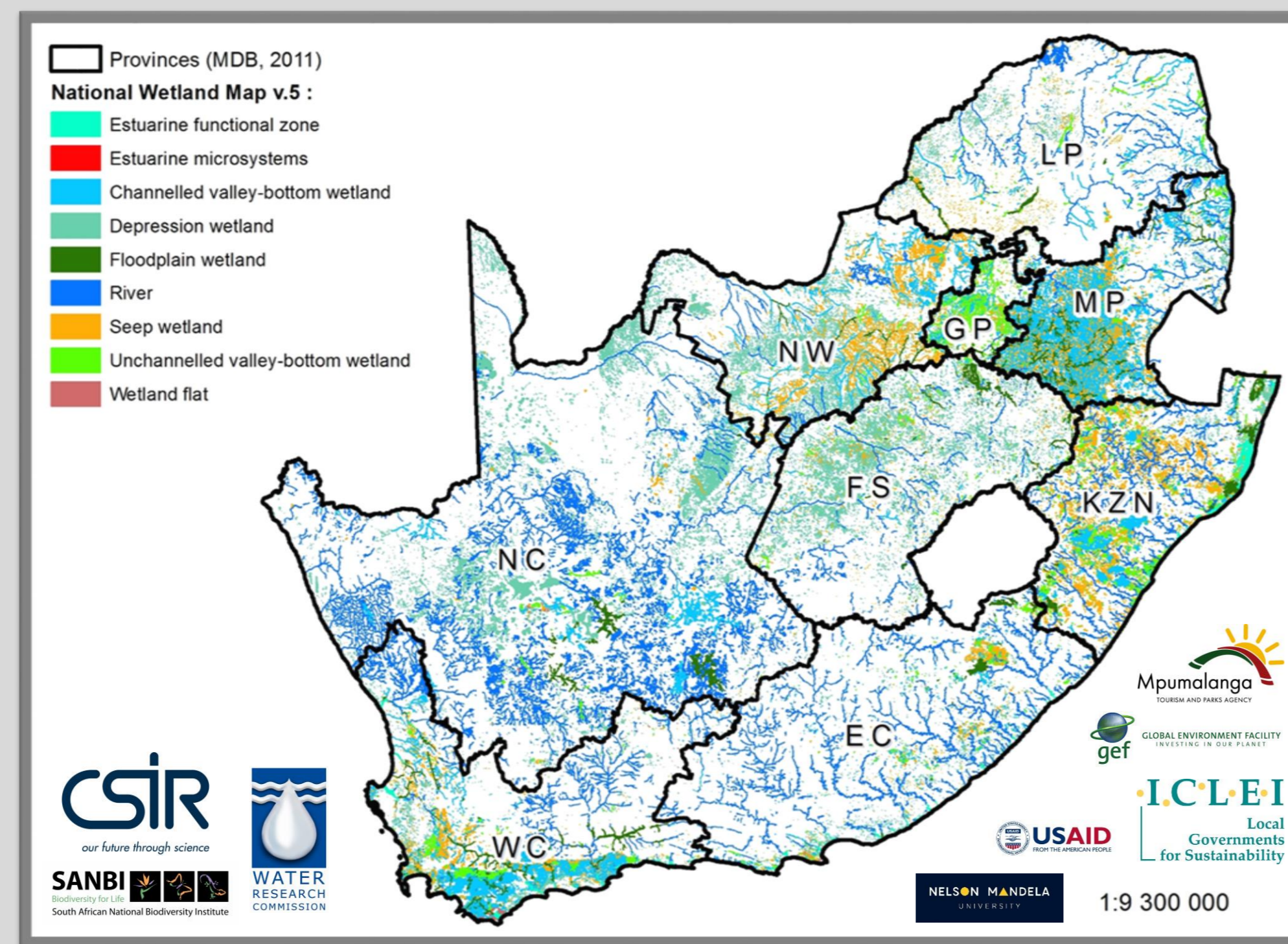
Ixhaphozi abaluleke ngoba:

- Asipha amanzi unyaka wonke
- Akiqiza inhlabathi elivundile



Isikweletu sezithombe: Dr H van Deventer

Sinezinhlobo eziningi zama Ixhaphozi National Wetland Map
(Van Deventer et al. 2019).



Imephu ekhishwe ngu-Dr H van Deventer

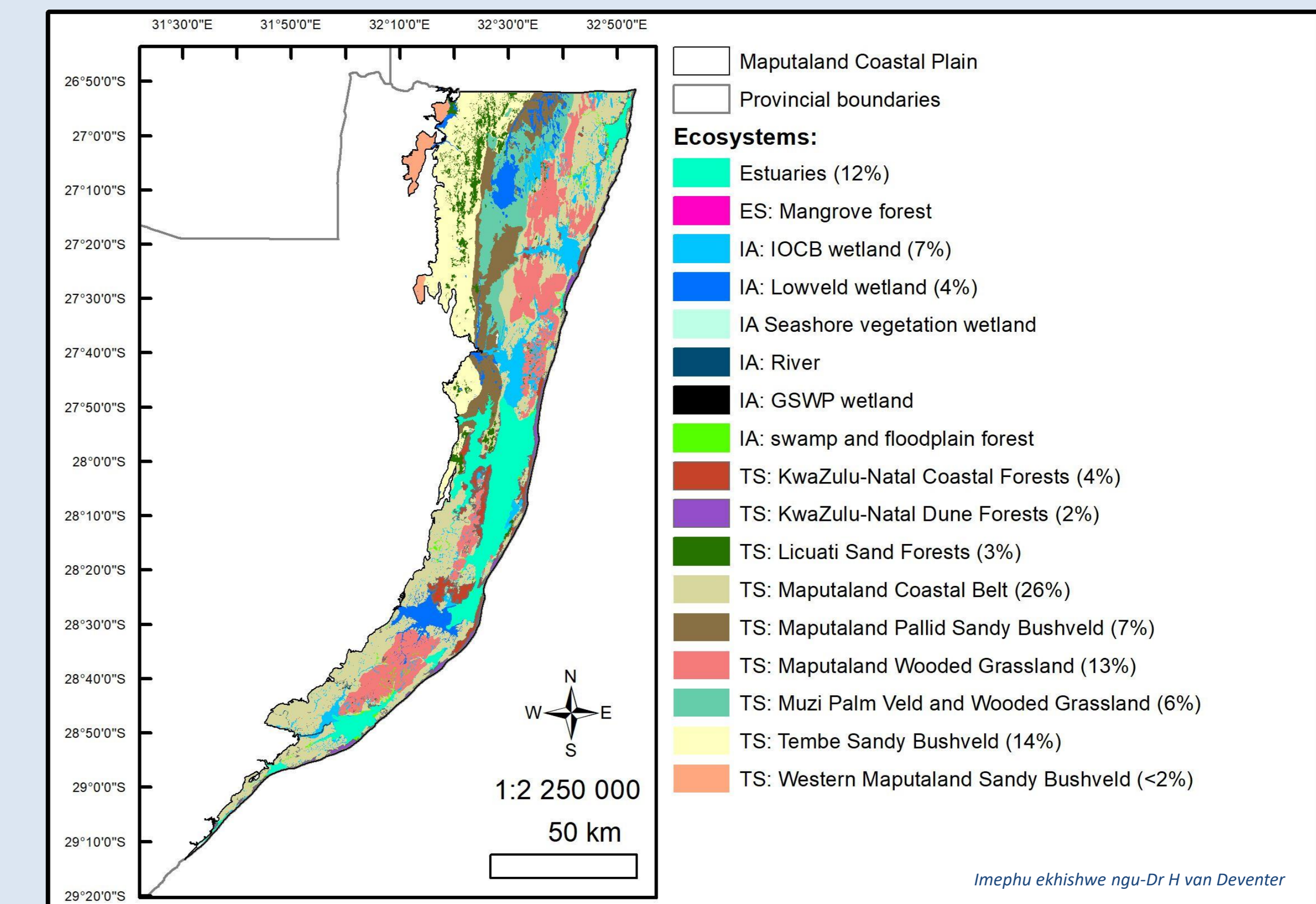
Inhloso yomsebenzi esize ngawo:

1. ukuqinisekisa indawo nenhlobo yamaxhaphozi atholokala eMaputaland Coastal Plain:

- Ukuhlenga umonokalo kulamaxhaphozi nanokuthi asngalungiseka yini
- Lokho kusho into efanayo

2. Sizohlangana nabaphathi bomhlaba, ukufunda ngomhlaba wabo, nokwazi ukuthi imuphiumhlaba obalulekile kubo.

- Sizoxoxa sibonisane nomphakathi
- Sikhombisane ukuhluka, ukubaluleka nokumoshakala komhlaba.



Kutholakala izinhlobo ezahlukene zama xhaphozi

Lake Sibaya (Isikweletu sezithombe: Susan Janse van Rensburg, August 2018).



- Kukhona Ixhaphozi anezihlahla nezithelo eziningi.
- Kukhona Ixhaphozi angenazihlahla (avulekile).



Isikweletu sezithombe: Prof JF Durand



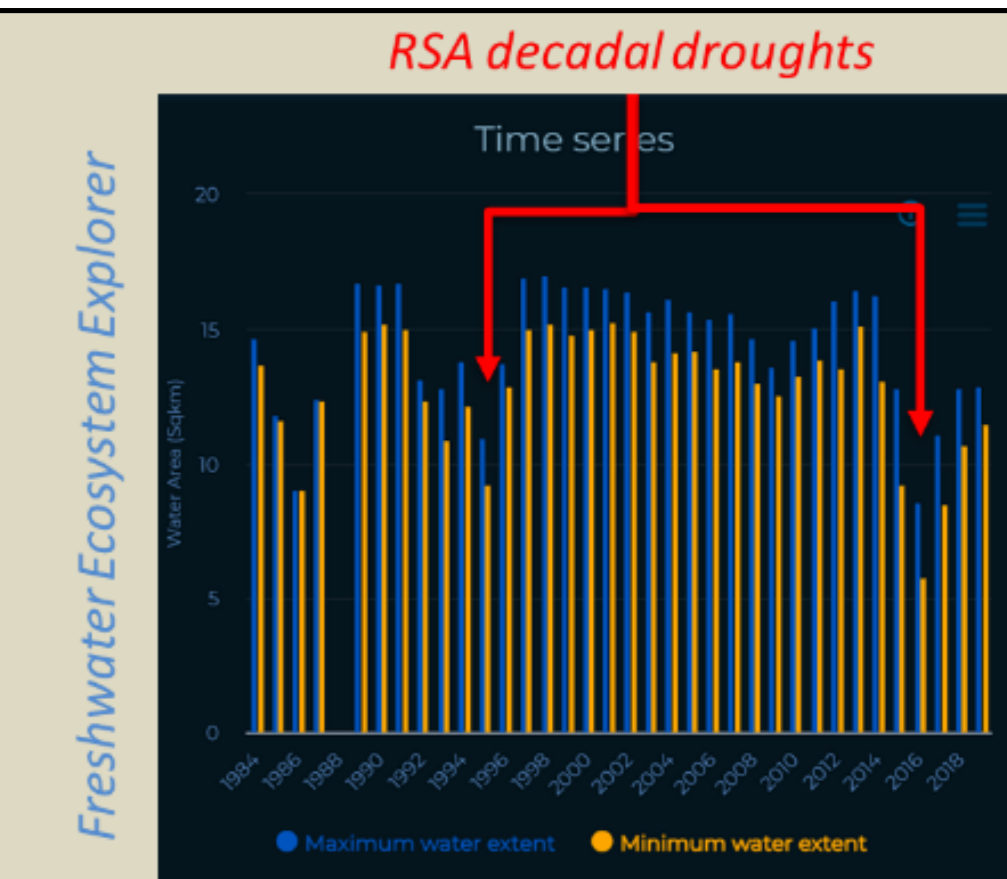
Isikweletu sezithombe: Dr H van Deventer



Isikweletu sezithombe: Prof JF Durand

Sikhathazekile ngomhlaba waseMaputaland coastal plainuma silahlekelwa ilomhlaba, kungaphelainzuzo efika nawo. Yizo lezi izinkinga esihlangabezene nazo ngama wetlands. E.g. ukusikwa kwamahlathi kubulala umhlabathi ovundile.

- Sisebenzisa ubuchwepheshe bamaSatellite ukuthatha izithombe zomhlaba. Ngalezo zithombe siyakwazi ukubona ushintsho kumhlaba.
- Le Sisthombe singezansi sikhomisa ukushintsha kwezinga lamanzi, ngo'hamba kwesikhathi, eMaputaland Coastal Plain. Kuyavela uma encipha amanzi.



Aerial photo of the burning Vasi North Peatland. Photo was taken on 6 September 2017 from west to east.

Grundling, P.-L. & Grundling, A. 2019. Appendix C: Peat Pressures. In: Van Deventer et al. South African National Biodiversity Assessment 2018: Technical Report. Volume 2b: Inland Aquatic (Freshwater) Realm. CSIR report number CSIR/NRE/ECOS/IR/2019/0004/A. South African National Biodiversity Institute, Pretoria.
<http://hdl.handle.net/20.500.12143/6230>



Janse van Rensburg, S. 2019. NBA, 2018. <http://hdl.handle.net/20.500.12143/6230>.

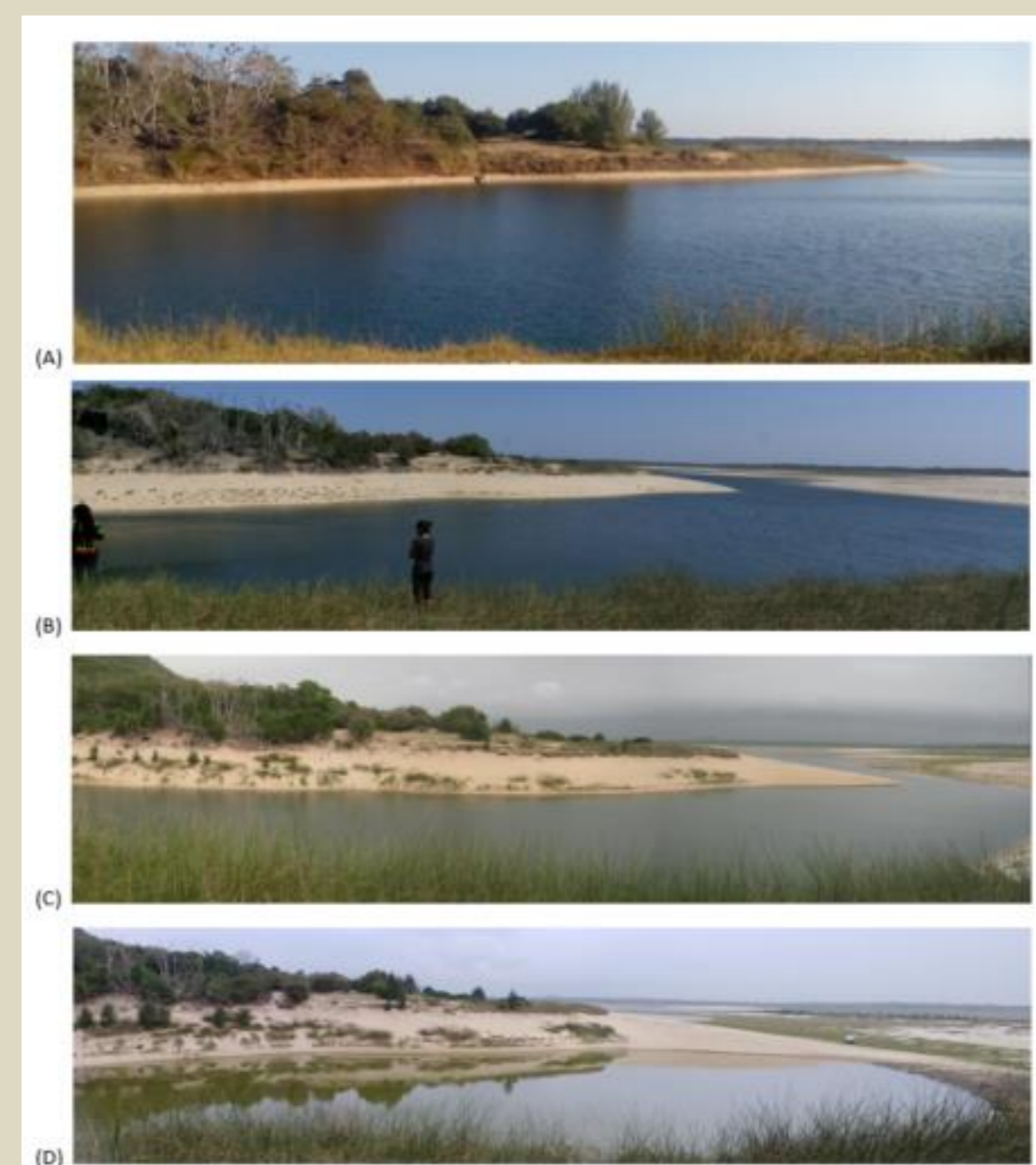


Figure 3.16. Swamp forest being cleared and drained just outside the KwaZulu-Natal park near Sanihana Bay just upstream of 'Tide in Gate' (A) (Swamp forest stream being drained) (B) and (C) = swamp forest recently cleared, while (D) and (E) being drained (Photo: Susan Janse van Rensburg, October 2018).

IXHAPHOZI eMAPUTALAND COASTAL PLAIN - IMITHI ETHOLAKALA KUMA

Barringtonia racemosa
(Ibhoqo / ibogo)



Isikweletu sezithombe: Dr Suzan Oelafse

Isikweletu sezithombe: <http://pza.sanbi.org/barringtonia-racemosa>

Bridelia micrantha
(Isihlobane, umshonge, umhlahle, umhlalamagwababa)



Isikweletu sezithombe: <http://pza.sanbi.org/bridelia-micrantha>

Isikweletu sezithombe: Brett Markwell <https://www.inaturalist.org/observations/76052269> (CC BY-NC 4.0)

Casearia gladiiformis
(Isibhaha, umgunguluzane, umjuluka)



Isikweletu sezithombe: Dr Ricky Taylor (CC BY-NC 4.0) <https://www.inaturalist.org/observations/54280110>

Isikweletu sezithombe: MagdaStLucia <https://www.inaturalist.org/observations/19401684> (CC BY-NC 4.0)

Cassipourea gummiflua
(isinuka, umbhovane, umnyamanzi, umjuluka)



Isikweletu sezithombe: Geoff Nichols (CC BY-NC 4.0) <https://www.inaturalist.org/observations/58856894>

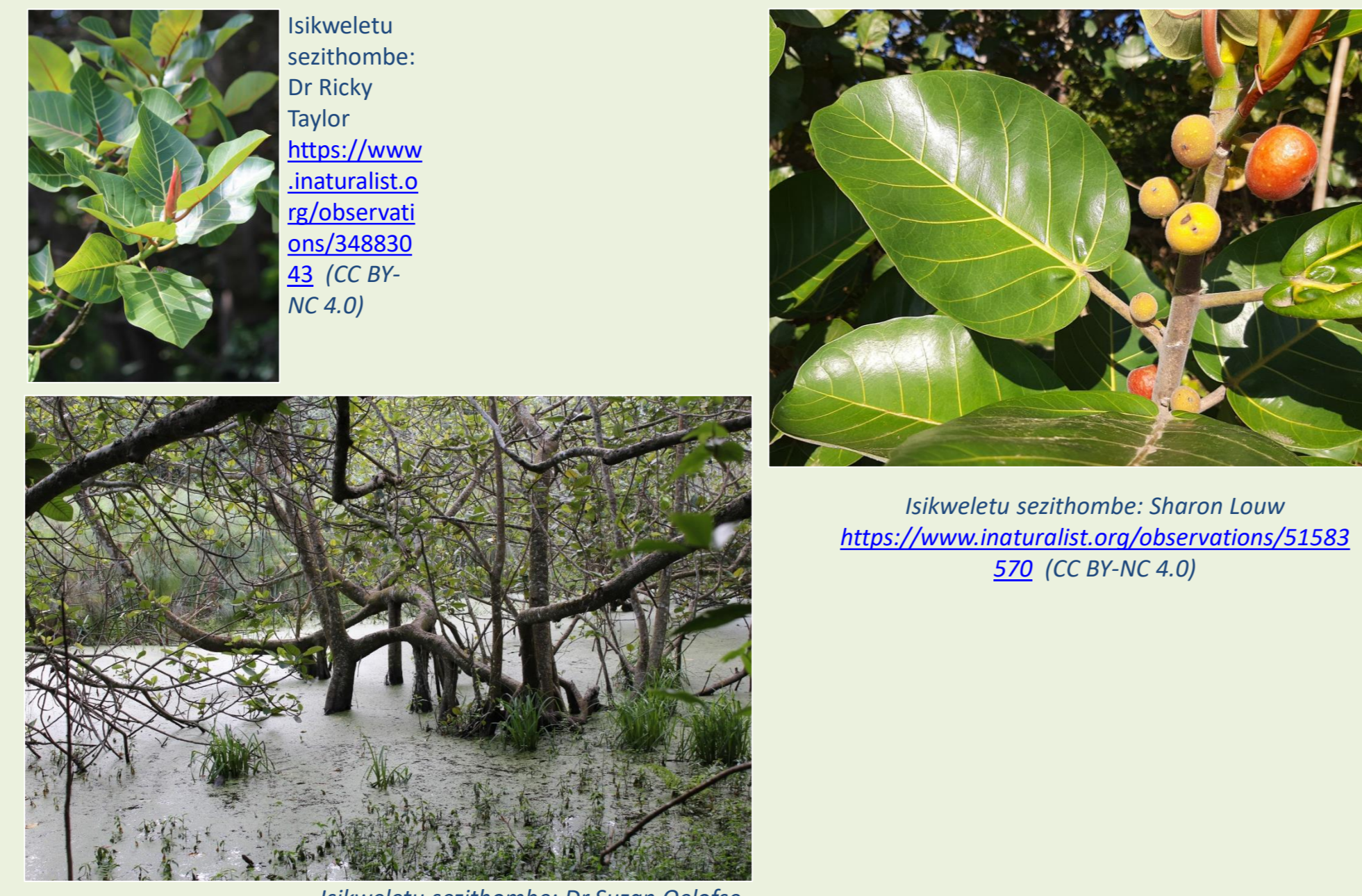
Ficus sur (Umkwane, ingobozweni, intombi-kayibhinci)



Photo on the right was taken by Penelope Brown and submitted To iNaturalist <https://www.inaturalist.org/observations/76095773> (CC BY-NC 4.0)

Photo on the right was taken by Benjamin Fredlund and submitted To iNaturalist <https://www.inaturalist.org/observations/69510463> (CC BY-NC 4.0)

F. trichopoda (Umvubu)



Isikweletu sezithombe: Dr Ricky Taylor <https://www.inaturalist.org/observations/34883043> (CC BY-NC 4.0)

Isikweletu sezithombe: Sharon Louw <https://www.inaturalist.org/observations/51583570> (CC BY-NC 4.0)

Isikweletu sezithombe: Dr Suzan Oelafse

Hibiscus tiliaceus (ulola, umlolwa)



Isikweletu sezithombe: Dr Suzan Oelafse

Isikweletu sezithombe: Dr Ricky Taylor <https://www.inaturalist.org/observations/11002666> (CC BY-NC 4.0)

Isikweletu sezithombe: Dr Heidi van Deventer

Macaranga capensis
(Iphumela, umfongamfongo, umphumelele, iphubane)



Isikweletu sezithombe: MagdaStLucia (CC BY-NC 4.0) <https://www.inaturalist.org/observations/20536742>

Isikweletu sezithombe: Robert Taylor <https://www.inaturalist.org/observations/11066931> (CC BY-NC 4.0)

Phoenix reclinata (Isundu, idama)



Isikweletu sezithombe: Johnny Voges (CC BY-NC 4.0) <https://www.inaturalist.org/observations/79251598>

Isikweletu sezithombe: Dr Ricky Taylor (CC BY-NC 4.0) <https://www.inaturalist.org/observations/79283201>

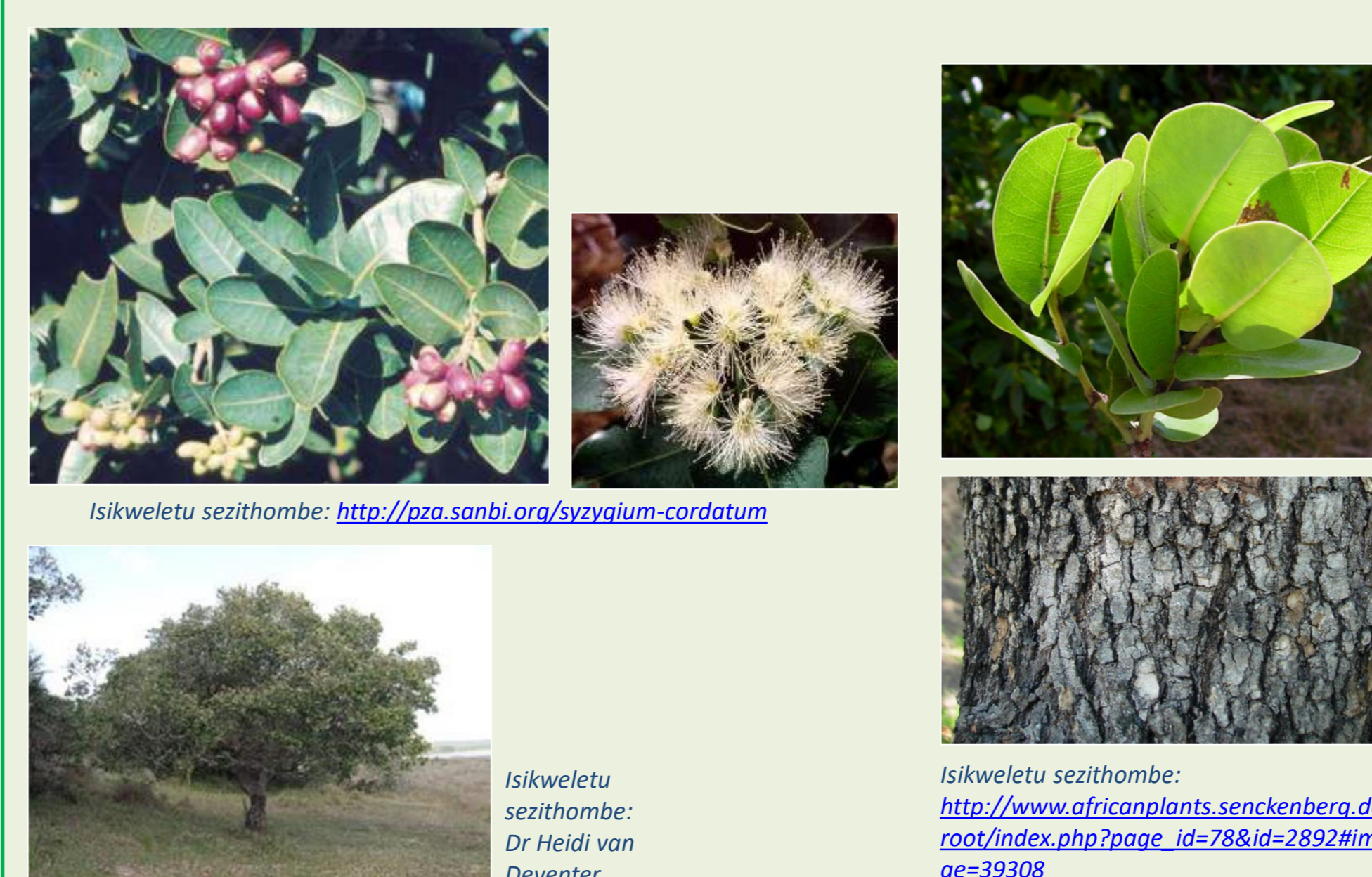
Raphia australis (Umvuma)



Isikweletu sezithombe: <http://pza.sanbi.org/raphia-australis>

Isikweletu sezithombe: Dr Ricky Taylor (CC BY-NC 4.0) https://www.inaturalist.org/guide_taxa/935636

Syzygium cordatum (Umdoni)

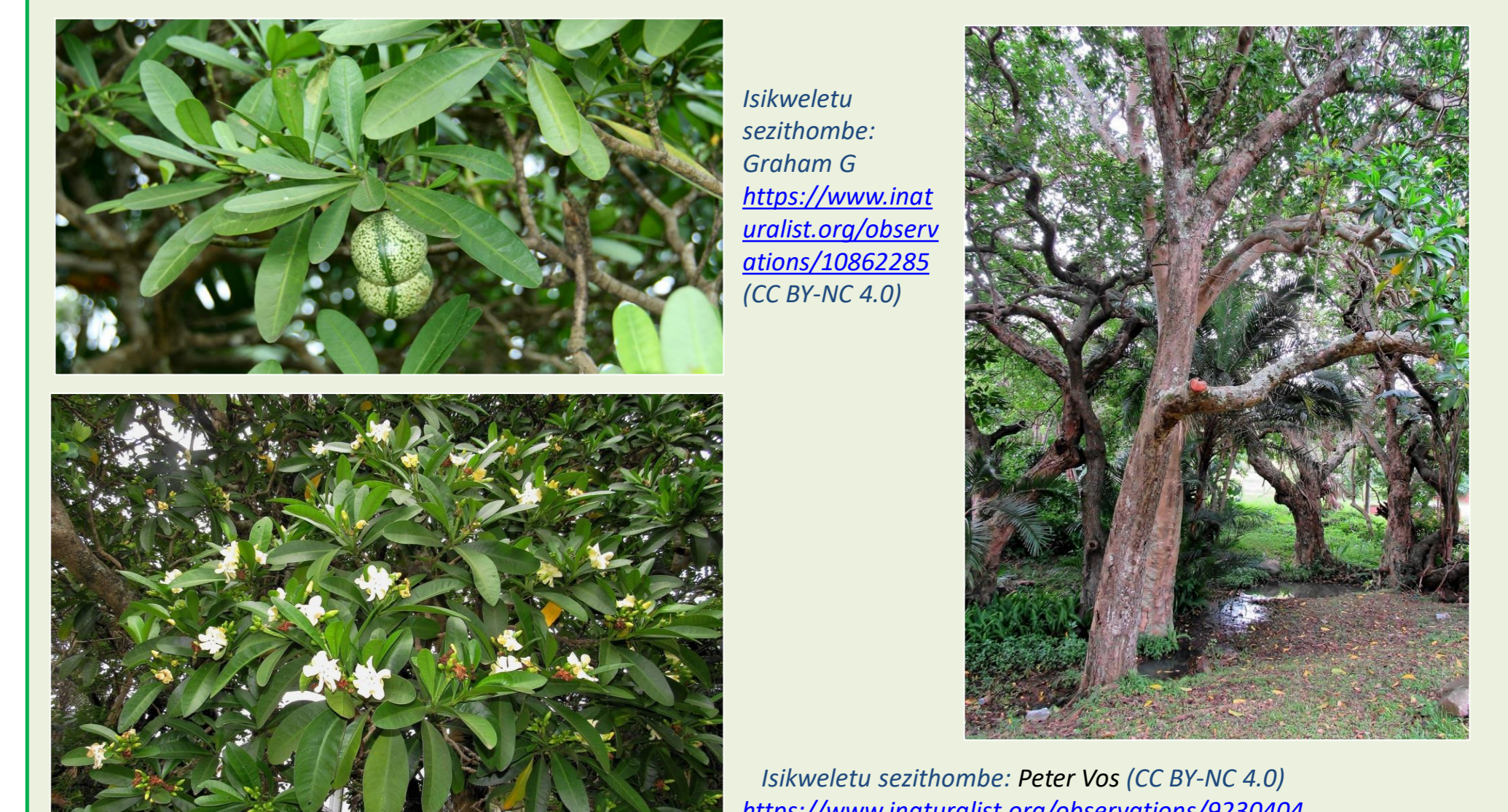


Isikweletu sezithombe: <http://pza.sanbi.org/syzygium-cordatum>

Isikweletu sezithombe: Dr Heidi van Deventer

Isikweletu sezithombe: http://www.africanplants.senckenberg.de/root/index.php?page_id=78&id=2892#wimage=39308

Voacanga thouarsii
(inomfi, umkhadlu, umhlambamanzi)



Isikweletu sezithombe: Graham G <https://www.inaturalist.org/observations/10862285> (CC BY-NC 4.0)

Isikweletu sezithombe: Peter Vos (CC BY-NC 4.0) <https://www.inaturalist.org/observations/9230404>