

ACCEPTED MANUSCRIPT • OPEN ACCESS

## Human dependence on natural resources in rapidly urbanising South African regions

To cite this article before publication: Stefano Balbi *et al* 2019 *Environ. Res. Lett.* in press <https://doi.org/10.1088/1748-9326/aafe43>

### Manuscript version: Accepted Manuscript

Accepted Manuscript is “the version of the article accepted for publication including all changes made as a result of the peer review process, and which may also include the addition to the article by IOP Publishing of a header, an article ID, a cover sheet and/or an ‘Accepted Manuscript’ watermark, but excluding any other editing, typesetting or other changes made by IOP Publishing and/or its licensors”

This Accepted Manuscript is © 2018 The Author(s). Published by IOP Publishing Ltd.

As the Version of Record of this article is going to be / has been published on a gold open access basis under a CC BY 3.0 licence, this Accepted Manuscript is available for reuse under a CC BY 3.0 licence immediately.

Everyone is permitted to use all or part of the original content in this article, provided that they adhere to all the terms of the licence <https://creativecommons.org/licenses/by/3.0>

Although reasonable endeavours have been taken to obtain all necessary permissions from third parties to include their copyrighted content within this article, their full citation and copyright line may not be present in this Accepted Manuscript version. Before using any content from this article, please refer to the Version of Record on IOPscience once published for full citation and copyright details, as permissions may be required. All third party content is fully copyright protected and is not published on a gold open access basis under a CC BY licence, unless that is specifically stated in the figure caption in the Version of Record.

View the [article online](#) for updates and enhancements.

## Human dependence on natural resources in two rapidly urbanising South African regions

Stefano Balbi<sup>1,\*</sup>, Odirilwe Selomane<sup>2,3,\*†</sup>, Nadia Sitas<sup>3,5</sup>, Ryan Blanchard<sup>3</sup>, Ilse Kotzee<sup>3</sup>, Patrick O'Farrell<sup>3,4</sup>, Ferdinando Villa<sup>1,6</sup>

\* Joint first authors

† Corresponding author

<sup>1</sup>Basque Centre for Climate Change (BC3), Sede Building, Campus EHU/UPV, Leioa, Bizkaia, Spain

<sup>2</sup>Stockholm Resilience Centre, Stockholm University, Sweden

<sup>3</sup>Council for Scientific and Industrial Research, South Africa

<sup>4</sup>Percy FitzPatrick Institute of African Ornithology, University of Cape Town, Rondebosch, South Africa.

<sup>5</sup>Department of Conservation Ecology and Entomology, Stellenbosch University, South Africa

<sup>6</sup>IKERBASQUE, Basque Foundation for Science, Bilbao, Bizkaia, Spain

### Abstract

Enhancing the governance of social-ecological systems for more equitable and sustainable development is hindered by inadequate knowledge about how different social groups and communities rely on natural resources. We used openly accessible national survey data to develop a metric of overall dependence on natural resources. These data contain information about households' sources of water, energy, building materials and food. We used these data in combination with Bayesian learning to model observed patterns of dependence using demographic variables that included: gender of household head, household size, income, house ownership, formality status of settlement, population density, and in-migration rate to the area. We show that a small number of factors – in particular population density and informality of settlements – can explain a significant amount of the observed variation with regards to the use of natural resources. Subsequently, we test the validity of these predictions using alternative, open access data in eThekweni and Cape Town metropolitan areas of South Africa. We discuss the advantages of using a selection of predictors which could be supplied through remotely sensed and open access data, in terms of opportunities and challenges to produce meaningful results in data-poor areas. With data availability being a common limiting factor in modelling and monitoring exercises, access to inexpensive, up-to-date and free to use data can significantly improve how we monitor progress towards sustainability targets.

### Social Media Abstract

A small selection of openly accessible demographic variables can predict household's dependence on local natural resources.

**Keywords:** Provisioning ecosystem services, sustainable development, urban transition, informality, machine learning, openly accessible data.

## 1 Introduction

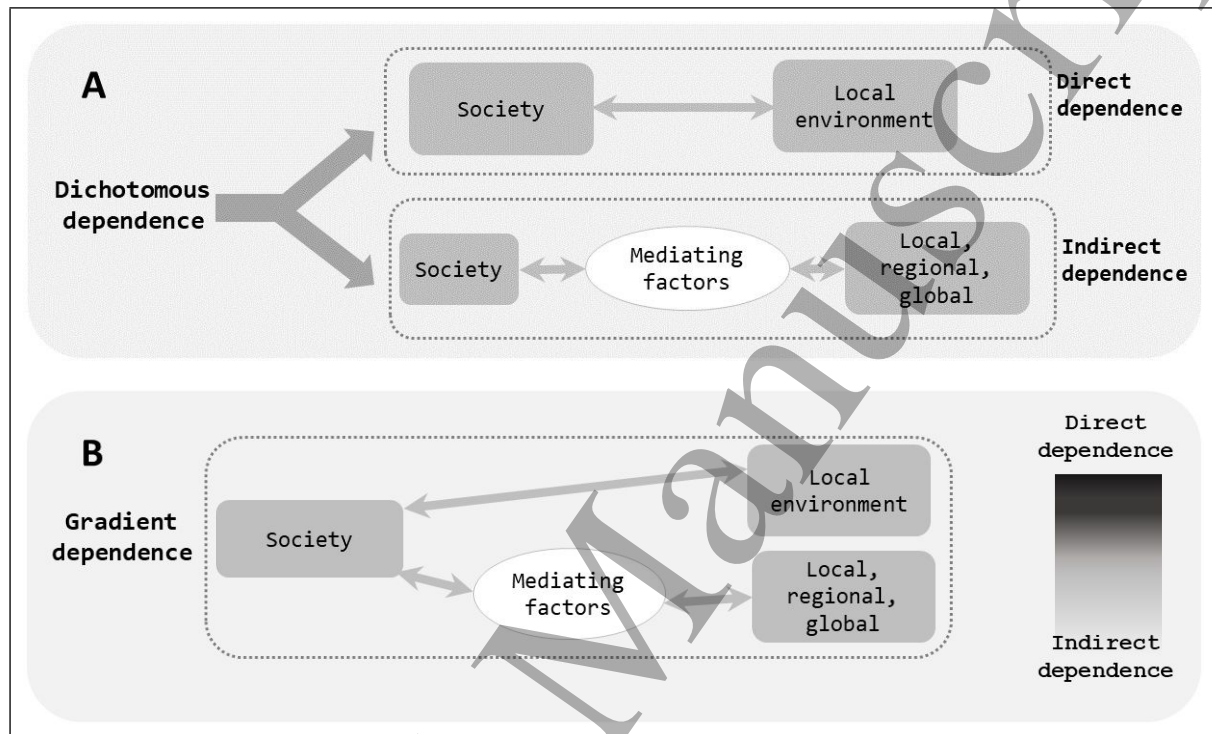
As countries develop and many societies transition to urbanisation, they tend to reduce their dependence on the local natural environment to meet basic needs (Anderson 1987, Cumming et al. 2014, Sanderson et al. 2018). This decoupling is often described by the transition from a strong reliance on agriculture as the main source of national income to other, less directly coupled sectors such as industrial and service sectors (Daunton 1995, Mellor 1995, Soubbotina and Sheram 2000). Beyond agriculture, this transition entails a move from 'green-loops', i.e. social-ecological systems characterized by high dependence on local provisioning ecosystem services (ES), to 'red-loops', characterised by intensive imports or mediated (See Figure 1) provisioning ES from local or other systems (Cumming et al 2014). A key driver of this transition is urbanisation (Grimm et al. 2008). Urban areas will continue to experience rapid increases of population, consumption, and diet changes, among other factors into the future. How cities balance rapid urbanisation in relation to resource consumption may determine whether or not many of the Sustainable Development Goals (SDGs) are achieved (UN 2015).

In today's globalized world, most of the urban consumption of natural resources is mediated by biophysical features (e.g. cross border river systems), formal and informal markets, international governance mechanisms (e.g. protection of threatened species) and infrastructures (e.g. dams) (Syrbe and Walz 2012, Reyers et al. 2013, Palomo et al. 2016). As a result, most people in urban environments consume natural resources produced or extracted somewhere else (Liu et al. 2013, Nel et al. 2017). However, cities are not homogenous entities and seeing them as such can mask their unique development trajectories and the differentiated dependences of various groups and sectors on local ecosystems. For example, urbanisation in the Global South is partly characterised by informality both in land-use, resource access, governance processes (Brouwer et al. 2009, McFarlane 2012, Güneralp et al. 2018). In-migration from rural areas usually occurs more quickly than infrastructure can be developed to meet the growing demand (Foster and Briceno-Garmendia 2010, Brueckner and Lall 2015). Additionally, there is incomplete and unequal access to the main infrastructure grid and other formally provided services such as water and energy, which often imply that people have to rely on local ES as alternatives.

Urbanisation in cities in the Global South also involves a combination of people relocating permanently to cities, people moving to cities but maintaining strong connections to rural areas, and 'circular migration' which refers to repeated temporary migration between two or more areas (Collinson et al. 2007, UNDP and Newland 2009, Masterson et al. 2017). Urban dwellers in these cities continue to rely on local natural resources to satisfy basic needs (McHale et al. 2013). This means that natural resources within the city boundaries play a broader role beyond providing recreational and cultural services, which are often the most commonly cited and studied urban ecosystem services (Bertram and Rehdanz 2015, La Rosa et al. 2016). The direct extraction of natural resources within the city boundaries has implications for how natural resources in urban areas are managed and sustained.

Tools and approaches that can account for multiple modalities of reliance on the environment can help understand and manage natural resources and man-made infrastructure and support targeting of policies towards the Sustainable Development Goals (SDGs). In contrast to the common framing of natural resource dependence as a dichotomous category, we propose a conceptualization of dependence as a gradient (Figure 1). This builds on Cumming et al., (2014) and (Hamann et al. (2015)'s conceptualisations of 'green and red loops' which shows dependence on natural resources being both direct and indirect, or local and nonlocal. Similar to Raudsepp-Hearne et al. (2010) and Hamann et al (2015), we use national survey data, which they used successfully to explore dependence on and use of ecosystem services at national and subnational scales. First, we develop a metric of households' overall dependence

on natural resources based on Statistics South Africa's census data. Second we use households' demographic characteristics to model the same patterns observed in the census data using machine learning. Lastly, we explore whether similar patterns can be observed using other publicly available data. Our context of analysis is the eThekweni Metropolitan Municipality, comprising the city of eThekweni (Durban) in South Africa. We show that our simulation accurately models the empirical data and that some of the main variables driving the model can be sourced from alternative data sources in the absence of national statistics. Lastly, we discuss the implication of these findings for other data-scarce African metropolitan areas, and more generally for similar contexts in the Global South.



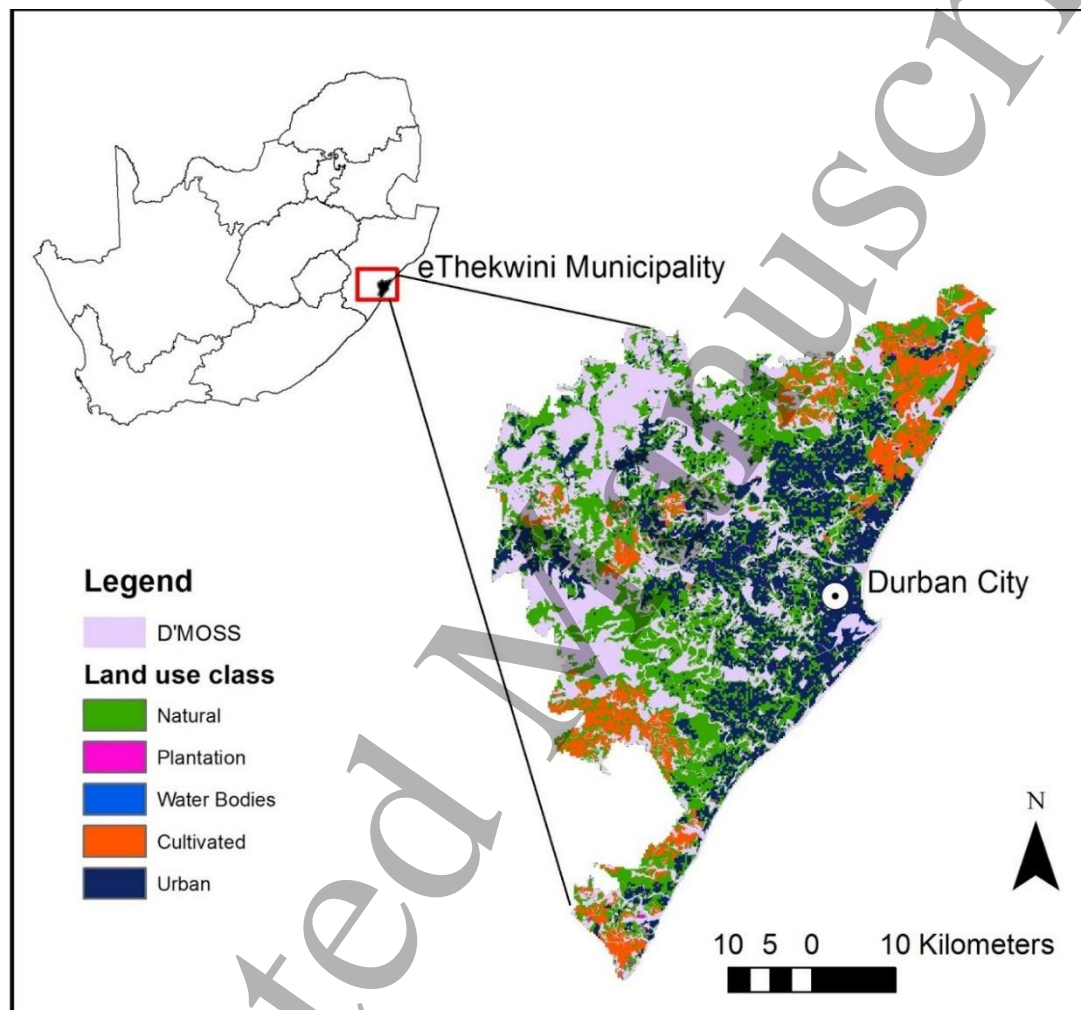
**Figure 1.** Conceptualisations of dependence on ecosystems. (a) Dichotomous view of dependence suggests that people depend either directly or indirectly on natural resources. Direct dependence refers to locally sourced or unmediated use, whereas indirect dependence means nonlocal or mediated use. Mediating factors include physical infrastructure (e.g. dams or taps), markets or even institutions. The dichotomous view also suggests that often rural areas are more directly dependent whereas urban areas tend to be more indirectly dependent. (b) Alternative framing of dependence as a gradient. This view suggests that people can depend on natural resources both directly and indirectly at the same time, along a gradient. The gradient could represent physical space (e.g. rural-urban) or socioeconomic factors such as income levels (e.g. rich to poor), which affects how households depend on natural resources. Moreover, how households depend on natural resources is also affected by a range of factors such as seasonality (e.g. harvest season), income fluctuations, market fluctuations, climatic conditions and other factors which means households can move along the gradient towards either direct or indirect dependence depending on circumstances.

## 2 Materials and Methods

### 2.1 Study Area

The eThekweni Municipality is located on the east coast of South Africa in the province of KwaZulu Natal (Figure 2). It spans an area of 2,297 km<sup>2</sup> characterised by coastal plains and a steep, dissected topography. The municipality is a middle-income metropolitan region of 3.6 million people residing under highly unequal social, economic and environmental conditions.

The urban landscape consists of commercial buildings, formal and informal settlements and peri-urban agricultural land. Approximately 68% is considered rural, with pockets of dense settlements, and about 25% of the inhabitant live in informal and rural settlements. The region therefore shares an urban and rural landscape with a wide range of settlement types, where both rural and urban areas experience significant population growth. The unit of analysis for the study was the municipal ward level, the smallest administrative unit in South Africa; there were 103 wards in the 2011 census, and 113 in 2017 due to changes in administrative borders. Wards are also the scale at which socio-demographic data are collected in the national census of South Africa (StatsSA 2011).



**Figure 2.** The eThekweni Municipality showing the location of Durban and the Durban Metropolitan Open Space System (D'MOSS).

## 2.2 Model Design

Our approach is articulated in four steps. First, we take advantage of the existing and openly accessible 2011 Census data from Statistics South Africa (<http://www.statssa.gov.za/>) to develop a metric of overall *direct* dependence on natural resources (Equation 1). This metric of ES dependence, is determined by the product of the proportions of households in a ward that do not directly depend on the 5 natural resources considered (Table 1). In this formulation, 100% means that all households in a particular ward depend on at least one provisioning ES, and 0% means that none of the households depend on any of the provisioning ES. The five

ES were chosen for two main reasons: first, because they are provided by the census data, and second because they can be disaggregated to the smallest administrative unit in South Africa. Other data, e.g. water quality determined by households treating water before using it, are only available at the provincial scale, which is not a useful scale for our analysis.

**Table 1.** Provisioning ES used to develop the metric. Dependence is determined as proportion of households using these natural resources as their main sources.

Provisioning ES	Natural Resource	Key (Eq.1)
Freshwater use	Water from rivers and springs	pW
Crop production	Crop production in communal areas	pCR
Solid fuels for heating	Firewood and charcoal	pH
Solid fuels for cooking	Firewood and charcoal	pCF
Natural materials for constructing houses	Wood, grass, soil	pB

$$\text{(Eq. 1) } ES \text{ Dep.} = 100 * (1 - ((1 - pW) \cdot (1 - pCR) \cdot (1 - pH) \cdot (1 - pCF) \cdot (1 - pB)))$$

Secondly, we use seven socio-demographic variables available at the ward level in the South African Census data and one variable representing the coverage of open spaces across the municipality (described in Table 2), to explain the output from the metric. Some of these variables were also used in previous literature (Hamann *et al* 2015). The socio-demographic factors we used in this study have been identified elsewhere in literature to be important determinants of how communities, households or individuals interact with the natural environment and ultimately how they benefit from it (Leach *et al.* 1999, Daw *et al.* 2011, Al-assaf *et al.* 2014, Tadesse *et al.* 2014, Yang *et al.* 2015). The variable E6, which denotes the availability of natural open spaces within an administrative unit, was chosen as an environmental variable to determine whether or not open spaces matter for natural resources dependence.

**Table 2.** Explanatory variables used to model dependence on ecosystem services.

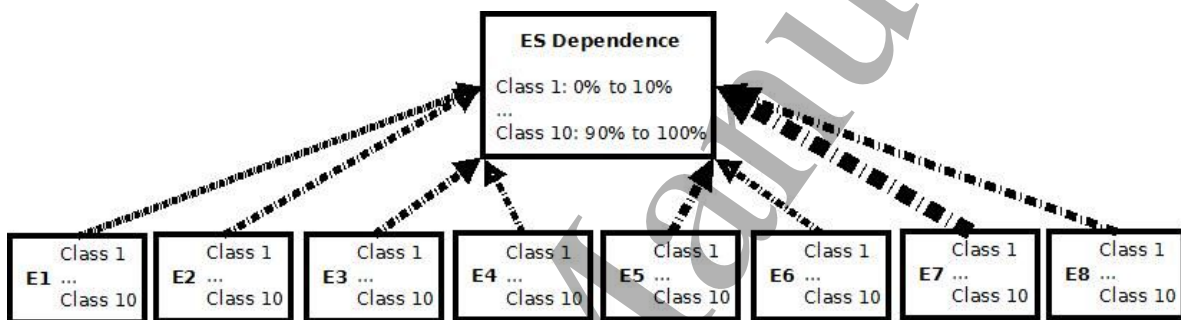
Variable	Description	Mean (SD)
(E1) Proportion of household with female head	Households headed by women	40.64 (6.49)
(E2) Proportion of large households	Households with more than 4 members	25.51 (10.65)
(E3) Proportion of poor households	2011 poverty line was *620 ZAR/person/month (StatSA 2012)	59.32 (17.22)
(E4) Proportion of households owning their house of residence	Census data distinguishes between owning, renting and free occupation.	55.70 (6.49)
(E5) Proportion of households living in informal settlements	Unplanned settlements where housing is not in compliance with current planning and building regulations	14.82 (14.37)
(E6) Proportion of land covered by the Metropolitan Open Space Network (D'MOSS)	D'MOSS is a system of open spaces (land and water), that incorporates areas of high biodiversity value which are linked together in a viable network (eThekweni Municipality 2011).	21.55 (15.19)



(E7) Population density	Hectares of land per household	2814.89 (5244.25)
(E8) Proportion of in-migration	People moving into the wards from other municipalities and beyond.	14.72 (10.91)

\*1 USD was 8.1285 ZAR in 2011

We investigate the explanatory power of the input variables (E1 – E8) by applying machine learning (Willcock et al. 2018). Our learning model uses the WEKA (Waikato Environment for Knowledge Analysis) machine-learning software (<http://www.cs.waikato.ac.nz/ml/weka/>) and integrated into k.LAB, the software powering the ARIES (Artificial Intelligence for Ecosystem Services; <http://aries.integratedmodelling.org/>) technology adopted for the study. We apply a Bayesian classifier (*BayesNet*) that learns a *naïve* Bayesian network from the data using the K2 algorithm with all input nodes connected to the output node (Witten et al. 2018). The training process involved 10 cross-validation iterations, each using 90% of the data to train the model and 10% to validate it. The machine learning algorithm used quantitative variables, discretised in 10 equal intervals, for both inputs and outputs.



**Figure 3.** Structure of the naive Bayesian network with all explanatory variables as input nodes connected to the output node. All nodes are discretised into 10 classes. Variable names and arrow thickness specified in Table 4.

To estimate dependence in the future, we use projected population growth data in the 25 years between 2011 and 2036 as input for the trained model. Population growth was based on the annual growth rate of population during 2001 – 2011, which averaged 1.09%, resulting in population growth from 3.4 million people in 2011 to 4.5 million people in 2036. The assumption of a constant growth rate is an obvious simplification given the dynamic migration, birth rates and other factors affecting the population. However, such approximate pictures of future dependence can still be informative and are commonly employed in “business as usual” scenarios (Millennium Ecosystem Assessment 2005, Hunt et al. 2012).

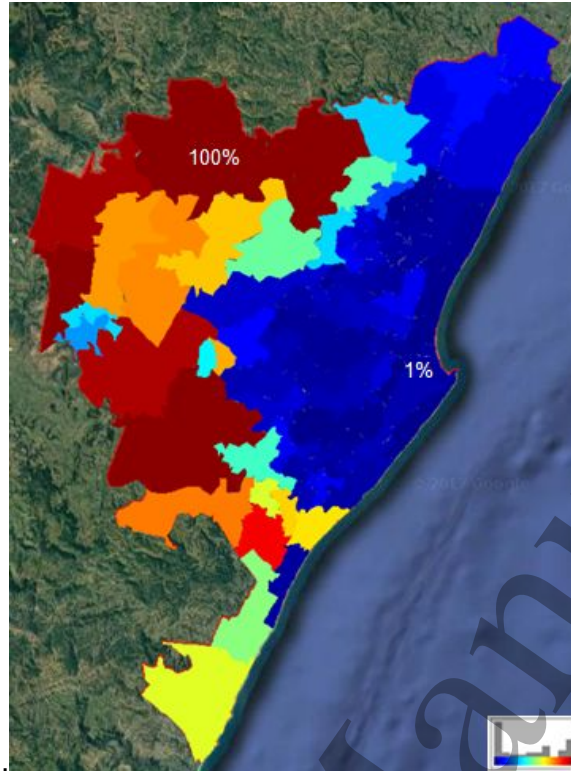
As a last step, we reapply the model at the pixel level, rather than at the ward level, using only two of the eight exploratory variables (Table 2: E5, E7), simulating a scenario in which only global and remotely sensed data are available. We discuss the predictions of this ‘data-poor’ model scenario both in the eThekweni Municipality and in the Cape Town metropolitan region.

### 3 Results

#### 3.1 Overall dependence metric

Figure 3 shows our metric of dependence, the percentage of households dependent on at least one of the five ecosystem services described in Table 1, at the ward level. Around eThekweni, only a small proportion of households are directly dependent on one or more of the above listed natural resources, as one would expect of an urban setting. Such proportions

increase the farther away from the city, as would also be expected. In the most marginal areas, 100% of households are directly accessing at least one natural resource among water, food (own grown), solid fuel (for heating and for cooking) and building materials.



**Figure 4.** Percentage of households directly dependent on at least one provisioning ES according to 2011 Census data (k.LAB screenshot).

### 3.2 Modelling dependence with socio-demographic variables

The machine learned Bayesian model, using eight input variables in Table 2, is able to reproduce the empirical output with significant accuracy as reported in Table 3: 92% of the instances are correctly classified using the training dataset and 60% using only the validation dataset. The spatial results are illustrated in Figure 5A. However, not all of the variables contribute equally. For example, a similar network using only the predictors that describe population (E2, E5, E7, E8) is able to capture 80% of correct instances (using the training set). The influence analysis of the network shows that three out of eight predictors – population density, proportion of large households, and proportion of households living in informal settlements – are driving the results (see Table 4). The strength of influence is calculated from the conditional probability tables and expresses the difference between the probability distributions of two nodes by looking at the posterior probability distribution of a node, for each possible state of the parent or child node. To summarize this difference, we report normalized Euclidean distance, although other types of distances (e.g. Hellinger) are also used (Anderson 2006).

**Table 3.** Machine learning cross validation results on training set.

Evaluation Metrics*	Using Training Set	10 Folds Cross Validation	Only Validation Set
Correctly Classified Instances**	95	70	6
Incorrectly Classified Instances	8	33	4
Kappa statistic	0.8458	0.2737	0.3939
Mean absolute error	0.0328	0.0771	0.0916



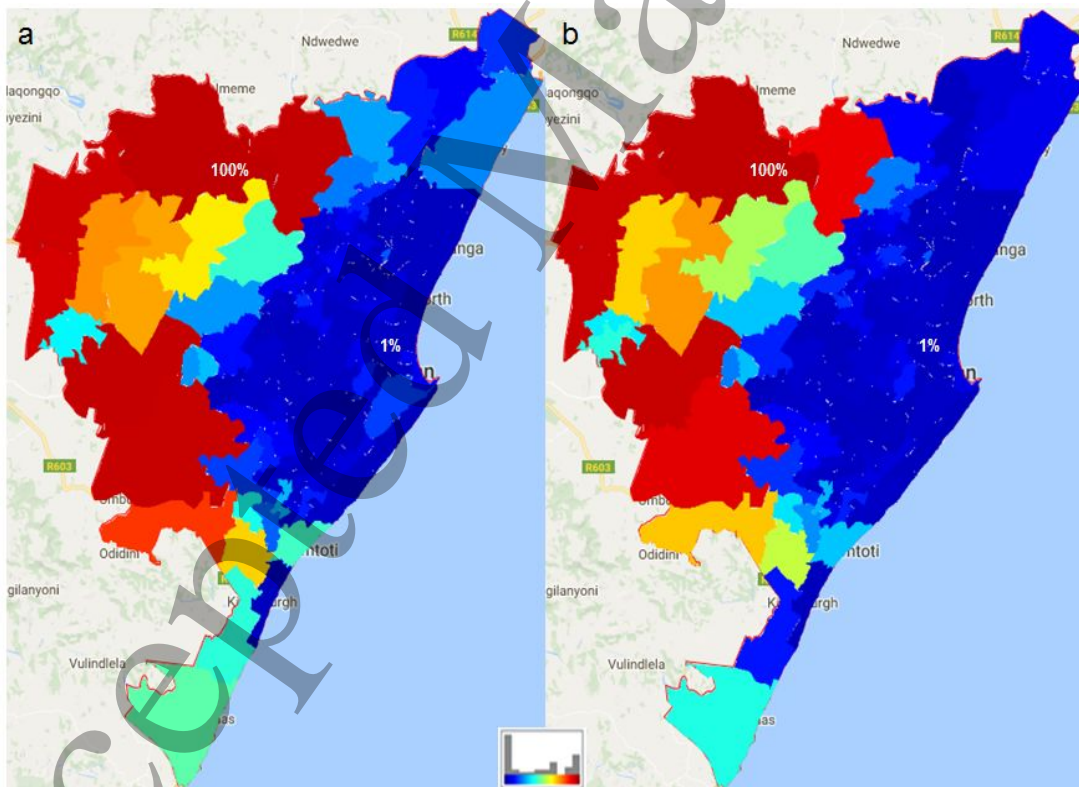
Root mean squared error	0.1134	0.2214	0.2589
Relative absolute error	29.5152%	68.7247%	75.5794%
Root relative squared error	49.4312%	96.1668%	103.2831%

\*All input nodes and the output node of the network are discretised in 10 equal intervals. \*\*There were four incorrectly classified instances— a 20% class was classified as 10%, a 50% class as 40%, a 100% class as 80% and finally a 60% class as 100%.

**Table 4.** Strength of influence by node measured with normalised Euclidian distance. The first four variables are the most important factors.

Variable	Average	Maximum
(E7) Population density	0.243381	0.642193
(E5) Proportion of households living in informal settlements	0.204627	0.380318
(E8) In-migration as a proportion of households in a ward	0.172172	0.353102
(E2) Proportion of large households	0.211939	0.342179
(E3) Proportion of poor households	0.177729	0.318287
(E6) Proportion of land covered by D'MOSS	0.183719	0.296675
(E4) Proportion of households owning their house of residence	0.182403	0.287565
(E1) Proportion of household with female head	0.176141	0.268139

The 25-year projected analysis shown in Figure 5B suggests a slow and mixed urbanisation transition in the metropolitan region, with most wards only slightly reducing their dependence on local natural resources and few moving in the opposite direction. The first outcome is more evident in the coast and in the closest outskirts of the city, while the second is seen in peri-urban areas and in the interior, confirming a divide between more and less urbanised areas. This can be attributed to densification in formal areas.

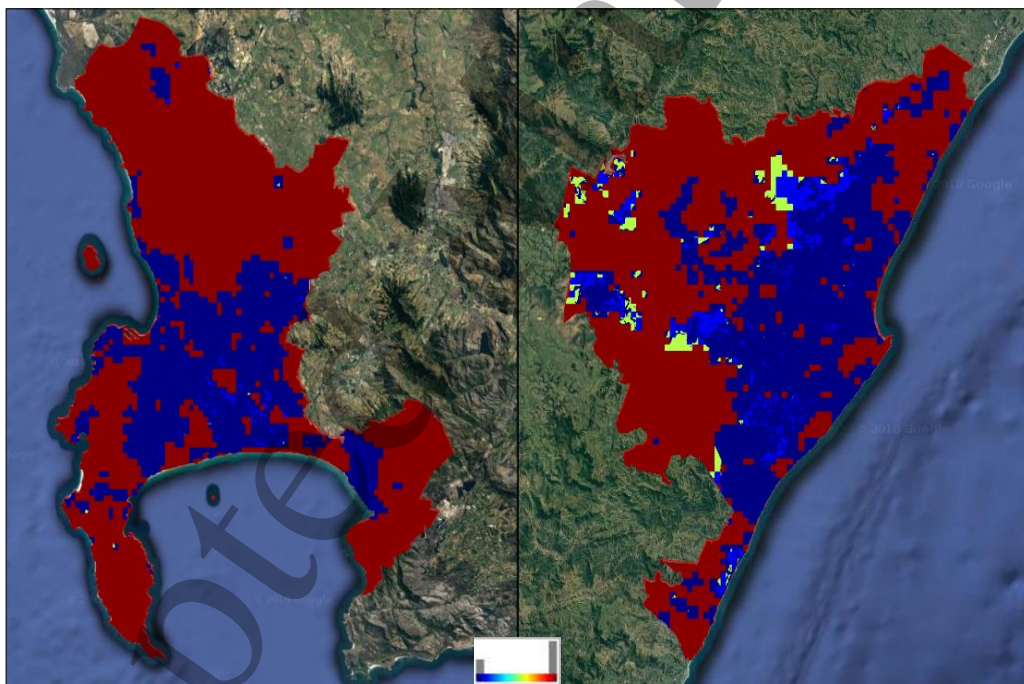


**Figure 5.** Machine learned percentage of households directly dependent on at least one provisioning ES before (a) and after (b) a scenario of population growth simulating 25 years (images exported from k.LAB automatically generated report).

### 3.3 Application of the model in data scarce situations

As a preliminary test, we applied the machine learned model described previously using only two out of eight input variables: presence of informal settlements (E5) and population density (E7). These variables, producing the strongest influence on the model results, can easily be provided through alternative data sources, including remote sensing and open data (e.g. for informal settlements see Busgeeth et al. 2008, Chakraborty et al. 2015). The Bayesian model was run with vector files containing polygons for the informal settlements (provided by the regional authority for eThekweni and downloaded from an open data project on informal settlements, <http://ismaps.org.za>, for Cape Town). Population density data came from the global grid dataset provided by NASA (Gridded Population of the World: GPW, v4), referring to the year 2015. The model was run in two spatial contexts, eThekweni and Cape Town metropolitan regions (Figure 6), at 100m resolution, although population density is currently offered at a resolution of 30 arc-seconds (approximately 1 km at the equator). The latter is thus the main limiting factor in achieving finer-scale results. In each 100m cell, the Bayesian network model simulates expected output using data-based evidence for the two mentioned variables and the prior probabilities learned from the previous steps for the remaining variables.

Figure 6 highlights how the distinction among wards is lost in favour of a more evenly distributed outcome. The gradient of dependence is still visible, particularly for the eThekweni context where the data about informal settlements is more comprehensive. Differently from eThekweni, the metropolitan area of Cape Town is regarded at 99% urban area.



**Figure 6.** Application of the machine learned model with only two spatially explicit input variables in Cape Town (on the left) and eThekweni (on the right) metropolitan regions (k.LAB screenshots). (The scale ranges from low dependence (blue) to high dependence (red)).

## 4 Discussion

Given our results, we hypothesize that our data-driven model could be applied in other areas of South Africa or even in parts of the African continent, with fewer input variables, and still

1  
2  
3 retain the ability to capture the dependence of households in metropolitan areas on natural  
4 resources. However, although the model provides reasonable indications in the eThekweni and  
5 Cape Town cases, its exportability to other cases requires further investigation. At the same  
6 time, the combination of machine learning techniques and heterogeneous typologies of data  
7 can be customized to local needs and provide useful indications in data scarce situations.  
8 Nevertheless, we showed that a simple model using 2 variables, is able to reasonably capture  
9 the spatial distribution of the gradient's extremes (respectively urban areas and natural areas)  
10 and some key hotspots of transition coinciding with the presence of informal settlements. It is  
11 important to note that the conditions for how households in a particular geographic location  
12 depend on direct natural resources is also dependent on the availability, climatic conditions  
13 and other contextual factors.  
14

15  
16 While South Africa provides detailed demographic data at the ward level, this is not the norm  
17 in other parts of the continent (Chandy 2013, Randall and Coast 2015). A methodology  
18 capable of substituting or complementing incomplete or missing national survey data with  
19 freely available or less expensive information can improve the coverage of studies of natural  
20 resource dependence – a valuable outcome as most regions of the world lack such data (Karp  
21 et al. 2015). Availability of such data is increasingly important for the governance of social-  
22 ecological systems, as countries and regions look for ways to achieve equitable and  
23 sustainable development.  
24

25  
26 Our study exemplifies the use and integration of multiple data sources to respond to  
27 multidimensional problems (Tallis et al. 2012). More generally, this work points at a possible  
28 future where the role of census data changes from being the main source of information to  
29 supporting learning and validation of models that can be run with proxy inputs. The use of  
30 census data as a complement to other data has long been done for Small Area Estimation  
31 (Rao and Yu 1994, Pfeffermann 2002). Other combinations of data include use of night light  
32 coverages (Xie et al. 2015) to estimate poverty in Africa, where direct poverty data are  
33 notoriously lacking (Serajuddin et al. 2015, Selomane et al. 2015). With the increased  
34 availability of remote sensing data (De Araujo Barbosa et al. 2015, Cord et al. 2015, 2017), it  
35 is becoming increasingly possible to assess changes over time at significantly higher  
36 frequencies. Integration technologies such as k.LAB (<http://www.integratedmodelling.org>), can  
37 reduce data preparation time and enable large-scale replication without additional costs by  
38 enabling rapid data and model access. Such advantages increase when the number of  
39 explanatory variables is small, as our study highlighted. With rapid assessment tools and easy  
40 web access to data and models, it becomes possible to envision monitoring services such as  
41 early warning systems, where specific structural transitions can be predicted based on  
42 continuously updated, remotely sensed data. In addition, this methodology could also be used  
43 by national statistic departments to track progress towards SDGs.  
44

45  
46 Our model has four main demographic driving variables (E2, E5, E7, E8) which overshadow  
47 the role of income. We expected income to be important, after studies (Shackleton et al. 2008,  
48 Yang et al. 2013) that highlight poverty as a significant determinant of dependence on natural  
49 resources. One explanation for this discrepancy is that South African households are shielded  
50 from much of the direct dependence because the government provides some free basic  
51 services to low-income households who cannot afford them, such as water, sanitation, waste  
52 removal and electricity (Muller 2008, Bhorat et al. 2012). Another explanation might involve  
53 the intricate connections between poverty and other variables (Unterhalter 2012, Djoudi et al.  
54 2016) such as gender, geographic positionality, ethnicity, immigration status etc. Additionally,  
55 poverty is also linked to and influenced by external drivers, path dependencies and cross-scale  
56 interactions (Haider et al. 2018). As a result, its effects may be masked or embedded in other  
57 process, especially those associated with power and with how systems of oppression and  
58 marginalisation play out in informal settlements (Rao et al. 2017).  
59  
60



Our analysis shows how investigating dependence with a fine-grained approach (e.g. ward level vs. fine-resolution grids) unveils fine-grained variations not captured by census data aggregated by administrative unit. For example, both the eThekweni and the Cape Town metropolitan regions were previously classified as uniformly 'red-loop', representing low direct dependence on local natural resources (Hamann *et al* 2015); our analysis shows variations in dependence, comprising low, high and transition loops. Within these areas we are now able to identify potential *transition hotspots*, crucial to understanding key social-ecological dynamics, such as inequality of access to natural resource and public infrastructure. Such areas are shared by people relying on direct harvest of natural resources, municipal services, or on a combination of both, with a mixture of *green* and *red loops* across households. This suggests that dependence on natural resources cannot be characterised in discrete groups, but rather along a gradient with underlying feedbacks as to when and how long natural resources are used. While our model is unable to determine which resources are preferred in space or time which still warrants a deeper analysis, identifying this gradient improves our ability to spot source areas of direct resource use. We argue that spatially explicit analysis based on verified criteria and finer-grained spatial data is an improvement over the use of data aggregated per administrative unit.

The lack of finer scale temporal analysis is certainly an area in need of improvement (Karp *et al* 2015). Our attempt to deal with this limitation through projection of population growth rates does not suggest radical changes in natural resource dependence, which remains largely mixed (Figure 5). It is possible that the level of dependence will persist for the foreseeable future (McHale *et al.* 2013), as the importance of informality in the urban and peri-urban system is becoming a common characteristic of rapidly growing cities on the African continent, and generally in the Global South (Roy 2009, McFarlane 2012). Thus a key priority for the local authorities should be to maintain adequate local ecosystem health (e.g. by further preserving and/or expanding conservation areas like the D'MOSS) around the identified transition hotspots, so that the supply of ES can be maintained over time. We regard this as a robust policy recommendation even considering the assumption of constant population growth over time, which might be underplaying more complex dynamics to come. For example, dependence on local ecosystems is determined by more than population growth and may be mediated or substituted by municipal provision of services. Additionally, the urbanisation process is not linear and may even yield surprising and potentially positive outcomes (Sanderson *et al* 2018), as people move between cities and rural areas in a circular migration pattern (McHale *et al* 2013, Collinson *et al* 2007). Yet this finding does highlight the need for adequate holistic management processes that are mindful of both human and environmental needs, and suggests that natural resources within these systems need to be managed accordingly along the gradient.

## 5 Conclusion

Survey-driven social data such as those made available by national statistical offices are expensive gather and update frequencies are low (usually 10-year cycles). For example, much of the demographic data required to monitor key proxy indicators, such as poverty, remain difficult to access or too expensive to develop for many areas of the globe. Such information is likely to be patchy or inconsistent at a certain spatial scale, or available for very few points in time over long intervals. Thus, efforts to complement, harmonize and validate inconsistent information and improve spatial and temporal resolution of such data products by means of more easily obtained data are of paramount importance. In this study we show that machine learning techniques can contribute to filling knowledge gaps concerning the use of natural resources by human societies. For our context of study, we show that it is possible to model human dependence on local natural resources with few demographic variables (population density, intensity of informal settlements, immigration rate and proportion of large size households) that can be produced at higher frequency and finer spatial resolution at minimum

cost, by combining remote sensing with crowd-sourced information. The methodology is particularly suited for monitoring programs in data-scarce areas of the Global South, as a means to include estimates of ES use in addition to well-developed methods to understand ES supply methods, and can be generalized to meet the needs of different sustainability related issues. Fully understanding the spatial and temporal dynamics of human dependence on local natural resources is fundamental in order to target existing policies, or create new ones that can enable the maintenance of adequate local ecosystem health, even more so in rapidly urbanising contexts.

### Acknowledgements

SB and FV are supported by the Basque Government through the BERC 2018-2021 program and by Spanish Ministry of Economy and Competitiveness MINECO through BC3 María de Maeztu excellence accreditation MDM-2017-0714. OS was supported by Sida funded GRAID project at Stockholm Resilience Centre. NS, RB, IK and POF were supported by the Council for Scientific and Industrial Research (CSIR) and SwedBio at the Stockholm Resilience Centre funded by Sida.

## 6 References

- Al-assaf, A., O. Nawash, and M. Omari. 2014. Identifying forest ecosystem services through socio-ecological bundles: a case study from northern Jordan. *International Journal of Sustainable Development & World Ecology* 21(4):314–321.
- Anderson, K. 1987. On why agriculture declines with economic growth. *Agricultural Economics* 1(3):195–207.
- Anderson, M. J. 2006. Distance-based tests for homogeneity of multivariate dispersions. *Biometrics* 62(1):245–253.
- De Araujo Barbosa, C. C., P. M. Atkinson, and J. A. Dearing. 2015. Remote sensing of ecosystem services: A systematic review. *Ecological Indicators* 52:430–443.
- Bertram, C., and K. Rehdanz. 2015. Preferences for cultural urban ecosystem services: Comparing attitudes, perception, and use. *Ecosystem Services* 12:187–199.
- Bhorat, H., M. Oosthuizen, and C. van der Westhuizen. 2012. Estimating a poverty line: An application to free basic municipal services in South Africa. *Development Southern Africa* 29(1):77–96.
- Brouwer, R., S. Akter, L. Brander, and E. Haque. 2009. Economic valuation of flood risk exposure and reduction in a severely flood prone developing country. *Environment and Development Economics* 14(3):397–417.
- Brueckner, J. K., and S. V. Lall. 2015. Cities in Developing Countries. Fueled by Rural-Urban Migration, Lacking in Tenure Security, and Short of Affordable Housing. *Handbook of Regional and Urban Economics* 5:1399–1455.
- Busgeeth, M. K., A. Brits, and J. Whisken. 2008. Potential application of remote sensing in monitoring informal settlements in developing countries where complimentary data does not exist. Page *Planning Africa Conference 14-16 April 2008 Sandton Convention Centre, Johannesburg, South Africa*.
- Chakraborty, A., B. Wilson, S. Sarraf, and A. Jana. 2015. Open data for informal settlements: Toward a user's guide for urban managers and planners. *Journal of Urban Management* 4(2):74–91.
- Chandy, L. 2013. *Counting the poor: Methods, problems and solutions behind the \$1.25 a day global poverty estimates*. Page *Investments to End Poverty*. Development Initiatives: Bristol, UK.
- Collinson, M. A., S. M. Tollman, and K. Kahn. 2007. Migration, settlement change and health in post-apartheid South Africa: Triangulating health and demographic surveillance with national census data. *Scandinavian Journal of Public Health* 35(SUPPL. 69):77–84.
- Cord, A. F., K. A. Brauman, R. Chaplin-Kramer, A. Huth, G. Ziv, and R. Seppelt. 2017.



- Priorities to Advance Monitoring of Ecosystem Services Using Earth Observation. *Trends in Ecology and Evolution* 32(6):416–428.
- Cord, A. F., R. Seppelt, and W. Turner. 2015. Sustainable development goals: Monitor ecosystem services from space. *Nature* 525(7567):33.
- Cumming, G. S., A. Buerkert, E. M. Hoffmann, E. Schlecht, S. von Cramon-Taubadel, and T. Tschardt. 2014. Implications of agricultural transitions and urbanization for ecosystem services. *Nature* 515(7525):50–57.
- Daunton, M. J. 1995. *Progress and Poverty: An Economic and Social History of Britain, 1700–1850*. Page OUP Catalogue. Oxford University Press.
- Daw, T., K. Brown, S. Rosendo, and R. Pomeroy. 2011. Applying the ecosystem services concept to poverty alleviation: the need to disaggregate human well-being. *Environmental Conservation* 38(04):370–379.
- Djoudi, H., B. Locatelli, C. Vaast, K. Asher, M. Brockhaus, and B. Basnett Sijapati. 2016. Beyond dichotomies: Gender and intersecting inequalities in climate change studies. *Ambio* 45(S3):248–262.
- Foster, V., and C. Briceno-Garmendia. 2010. *Africa's Infrastructure: A Time for Transformation*. Page (V. Foster and C. M. Briceño-Garmendía, editors). The World Bank.
- Grimm, N. B., S. H. Faeth, N. E. Golubiewski, C. L. Redman, J. Wu, X. Bai, and J. M. Briggs. 2008. Global change and the ecology of cities.
- Güneralp, B., S. Lwasa, H. Masundire, S. Parnell, and K. C. Seto. 2018. Urbanization in Africa: Challenges and opportunities for conservation. *Environmental Research Letters* 13(1):015002.
- Haider, L. J., W. J. Boonstra, G. D. Peterson, and M. Schlüter. 2018. Traps and Sustainable Development in Rural Areas: A Review. *World Development* 101:311–321.
- Hamann, M., R. Biggs, and B. Reyers. 2015. Mapping social–ecological systems: Identifying 'green-loop' and 'red-loop' dynamics based on characteristic bundles of ecosystem service use. *Global Environmental Change* 34:218–226.
- Hunt, D. V. L., D. R. Lombardi, S. Atkinson, A. R. G. Barber, M. Barnes, C. T. Boyko, J. Brown, J. Bryson, D. Butler, S. Caputo, M. Caserio, R. Coles, R. F. D. Cooper, R. Farmani, M. Gaterell, J. Hale, C. Hales, C. N. Hewitt, L. Jankovic, I. Jefferson, J. Leach, A. R. MacKenzie, F. A. Memon, J. P. Sadler, C. Weingaertner, J. D. Whyatt, and C. D. F. Rogers. 2012. Scenario archetypes: Converging rather than diverging themes. *Sustainability* 4(4):740–772.
- Karp, D. S., H. Tallis, R. Sachse, B. Halpern, K. Thonicke, W. Cramer, H. Mooney, S. Polasky, B. Tietjen, K. Waha, A. Walz, and S. Wolny. 2015. National indicators for observing ecosystem service change. *Global Environmental Change* 35:12–21.
- Leach, M., R. Mearns, and I. Scoones. 1999. Environmental Entitlements: Dynamics and Institutions in Community Based Natural Resource Management. *World Development* 21(2):225–247.
- Liu, J., V. Hull, M. Batistella, R. DeFries, T. Dietz, F. Fu, T. W. Hertel, R. Cesar Izaurralde, E. F. Lambin, S. Li, L. A. Martinelli, W. J. McConnell, E. F. Moran, R. Naylor, Z. Ouyang, K. R. Polenske, A. Reenberg, G. de M. Rocha, C. S. Simmons, P. H. Verburg, P. M. Vitousek, F. Zhang, and C. Zhu. 2013. Framing sustainability in a telecoupled world. *Ecology and Society* 18(2):art26.
- Masterson, V., M. Tengö, and M. Spierenburg. 2017. Competing Place Meanings in Complex Landscapes: A Social–Ecological Approach to Unpacking Community Conservation Outcomes on the Wild Coast, South Africa. *Society and Natural Resources* 30(12):1442–1457.
- McFarlane, C. 2012. Rethinking Informality: Politics, Crisis, and the City. *Planning Theory and Practice* 13(1):89–108.
- McHale, M. R., D. N. Bunn, S. T. Pickett, and W. Twine. 2013, December 1. Urban ecology in a developing world: Why advanced socioecological theory needs Africa. Wiley-Blackwell.
- Mellor, J. W. 1995. *Agriculture on the road to industrialization*. Page (J. W. Mellor, editor)

- 1  
2  
3 *Food Policy*. The Johns Hopkins University Press, Baltimore, Maryland.
- 4 Millennium Ecosystem Assessment. 2005. Human Well-being across Scenarios. *Ecosystems*
- 5 *and Human Well-Being: Scenarios (Vol 2)*:16–20.
- 6 Muller, M. 2008, April 1. Free basic water - A sustainable instrument for a sustainable future
- 7 in South Africa. SAGE Publications Sage UK: London, England.
- 8 Nel, J. L., D. C. Le Maitre, D. J. Roux, C. Colvin, J. S. Smith, L. B. Smith-Adao, A. Maherry,
- 9 and N. Sitas. 2017. Strategic water source areas for urban water security: Making the
- 10 connection between protecting ecosystems and benefiting from their services.
- 11 *Ecosystem Services* 28:251–259.
- 12 Palomo, I., M. R. Felipe-Lucia, E. Bennett, B. Martín-López, and U. Pascual. 2016. Chapter
- 13 Six - Disentangling the Pathways and Effects of Ecosystem Service Co-Production.
- 14 Pages 245–283 *Advances in Ecological Research*.
- 15 Pfeffermann, D. 2002. Small area estimation - New developments and directions.
- 16 *International Statistical Review* 70(1):125–143.
- 17 Randall, S., and E. Coast. 2015. Poverty in African Households: the Limits of Survey and
- 18 Census Representations. *Journal of Development Studies* 51(2):162–177.
- 19 Rao, J. N. K., and M. Yu. 1994. Small-area estimation by combining time-series and cross-
- 20 sectional data. *Canadian Journal of Statistics* 22(4):511–528.
- 21 Rao, N., E. T. Lawson, W. N. Raditloane, D. Solomon, and M. N. Angula. 2017. Gendered
- 22 vulnerabilities to climate change: insights from the semi-arid regions of Africa and Asia.
- 23 *Climate and Development* 0(0):1–13.
- 24 Raudsepp-Hearne, C., G. D. Peterson, and E. M. Bennett. 2010. Ecosystem service bundles
- 25 for analyzing tradeoffs in diverse landscapes. *Proceedings of the National Academy of*
- 26 *Sciences of the United States of America* 107(11):5242–7.
- 27 Reyers, B., R. Biggs, G. S. Cumming, T. Elmqvist, A. P. Hejnowicz, and S. Polasky. 2013.
- 28 Getting the measure of ecosystem services: a social-ecological approach. *Frontiers in*
- 29 *Ecology and the Environment* 11(5):268–273.
- 30 La Rosa, D., M. Spyra, and L. Inostroza. 2016, February 1. Indicators of Cultural Ecosystem
- 31 Services for urban planning: A review. Elsevier.
- 32 Roy, A. 2009. Why India cannot plan its cities: Informality, insurgence and the idiom of
- 33 urbanization. *Planning Theory* 8(1):76–87.
- 34 Sanderson, E. W., J. Walston, and J. G. Robinson. 2018. From Bottleneck to Breakthrough:
- 35 Urbanization and the Future of Biodiversity Conservation. *BioScience* 68(6):412–426.
- 36 Selomane, O., B. Reyers, R. Biggs, H. Tallis, and S. Polasky. 2015. Towards integrated
- 37 social-ecological sustainability indicators: Exploring the contribution and gaps in existing
- 38 global data. *Ecological Economics* 118:140–146.
- 39 Serajuddin, U., H. Uematsu, C. Wieser, N. Yoshida, and A. Dabalen. 2015. *Data deprivation*
- 40 *- Another deprivation to end*. Page *World Bank Policy Research Working Paper*. The
- 41 World Bank, Washington, D.C.
- 42 Shackleton, C., S. Shackleton, J. Gambiza, E. Nel, K. Rowntree, and P. Urquhart. 2008.
- 43 Links between Ecosystem Services and Poverty Alleviation. *Situation analysis for arid*
- 44 *and semi-arid lands in southern Africa*(Submitted to: Ecosystem Services and Poverty
- 45 Reduction Research Programme: DFID, NERC, ESRC, January 2008):1–200.
- 46 Soubbotina, T. P., and K. Sheram. 2000. *Beyond Economic Growth: Meeting the Challenges*
- 47 *of Global Development*. World Bank Publications.
- 48 StatSA. 2012. *Poverty Trends in South Africa: An examination of absolute poverty between*
- 49 *2006 and 2011*. Statistics South Africa, Pretoria.
- 50 Syrbe, R. U., and U. Walz. 2012. Spatial indicators for the assessment of ecosystem
- 51 services: Providing, benefiting and connecting areas and landscape metrics. *Ecological*
- 52 *Indicators* 21:80–88.
- 53 Tadesse, G., E. Zavaleta, C. Shennan, and M. FitzSimmons. 2014. Local Ecosystem Service
- 54 Use and Assessment Vary with Socio-ecological Conditions: A Case of Native Coffee-
- 55 Forests in Southwestern Ethiopia. *Human Ecology* 42(6):873–883.
- 56 Tallis, H., H. A. Mooney, A. Sandy, P. Balvanera, W. Cramer, K. Daniel, S. Polasky, B.
- 57 Reyers, T. Ricketts, S. Running, K. Thonicke, T. Britta, and W. Ariane. 2012. A global
- 58
- 59
- 60

- 1  
2  
3 system for monitoring ecosystem service change. *BioScience* 62(11):977–986.  
4 UN. 2015. *Transforming our world: the 2030 Agenda for Sustainable Development*. United  
5 Nations, New York.  
6 UNDP, and K. Newland. 2009. Circular Migration and Human Development. *UNDP*  
7 *Research papers* 2009(42):30.  
8 Unterhalter, E. 2012. Poverty, education, gender and the Millennium Development Goals:  
9 Reflections on boundaries and intersectionality. *Theory and Research in Education*  
10 10(3):253–274.  
11 Willcock, S., J. Martínez-López, D. A. P. Hooftman, K. J. Bagstad, S. Balbi, A. Marzo, C.  
12 Prato, S. Sciandrello, G. Signorello, B. Voigt, F. Villa, J. M. Bullock, and I. N.  
13 Athanasiadis. 2018. Machine learning for ecosystem services. *Ecosystem Services*.  
14 Witten, I. H., E. Frank, M. A. Hall, and C. J. Pal. 2018. *Data Mining: Practical Machine*  
15 *Learning Tools and Techniques*. 4th edition. Morgan Kaufmann Publishers.  
16 Xie, M., N. Jean, M. Burke, D. B. Lobell, and S. Ermon. 2015. Transfer Learning from Deep  
17 Features for Remote Sensing and Poverty Mapping. Page 30th *AAAI Conference on*  
18 *Artificial Intelligence*.  
19 Yang, H., R. Harrison, Z.-F. Yi, E. Goodale, M.-X. Zhao, and J.-C. Xu. 2015. Changing  
20 Perceptions of Forest Value and Attitudes toward Management of a Recently  
21 Established Nature Reserve: A Case Study in Southwest China. *Forests* 6(9):3136–  
22 3164.  
23 Yang, W., T. Dietz, D. B. Kramer, X. Chen, and J. Liu. 2013. Going Beyond the Millennium  
24 Ecosystem Assessment: An Index System of Human Well-Being. *PLoS ONE*  
25 8(5):e64582.  
26  
27  
28  
29  
30  
31  
32  
33  
34  
35  
36  
37  
38  
39  
40  
41  
42  
43  
44  
45  
46  
47  
48  
49  
50  
51  
52  
53  
54  
55  
56  
57  
58  
59  
60